

Renfrew MUSEUM & PARK



“Walk Back In Time”

Spring 2023

der Wetterhahn

The Weathervane: News & Updates from the Farm

Our mission is to preserve, enhance, promote, and interpret the Royer family Pennsylvania German Farmstead, the Nicodemus and Bell collections, and the surrounding Park.

Spring Into Something New: Cultivate Inspiration This Season

In this issue:

- ♦ A Message from Our Executive Director
- ♦ There's Nothing "Butter": Dairying in Early America
- ♦ Grinding On: Mill Project Update & Groundbreaking
- ♦ Upcoming Programs and Events
 - 48th Opening Day Celebration, Summer Concerts, 151st Arbor Day, Yoga Flow @ Renfrew, #RenfrewOnTheRoad: Gettysburg Civil War Show, Scherenschnitte Workshop — and more!
- ♦ Artifact Spotlight: Rebecca Emes Coffeepot on Stand

Visit us at www.RenfrewMuseum.org

Renfrew
MUSEUM & PARK



1010 East Main Street
Waynesboro, PA 17268

Address Service Requested



Non-Profit Org.
U.S. Postage
PAID
Waynesboro, PA
17268
Permit No. 405

Renfrew Administrative Staff Contacts

Becky LaBarre
Executive Director & CEO
becky.labarre@renfrewmuseum.org

Steve LaBarre
Manager of Visitor Experiences
steve@renfrewmuseum.org

Gene Kelley
Manager of Buildings & Grounds
gene@renfrewmuseum.org



(717) 762-4723
info@renfrewmuseum.org
www.RenfrewMuseum.org

HOURS OF OPERATION
Summer (Mid-April—Mid-October)
Wed.-Fri. 9am—4pm; Sat. 1pm—4pm
Winter (Mid-October—Mid-April)
Tues.-Fri. 9am—4pm
Park Grounds Open Daily, Dawn to Dusk

Our Mission

To preserve, enhance, promote, and interpret the Royer family Pennsylvania German farmstead, the Nicodemus and Bell collections, and the surrounding Park.

Our Vision

To be a welcoming and memorable destination where everyone can walk back in time.

Our Values

Integrity — With honesty and truth, we will adhere to the highest moral and ethical standards in all our endeavors.

Authenticity — We will interpret with historical accuracy all of our exhibits, collections, programs, and events.

Excellence — We will be exceptional in everything we do.

Follow Us on Facebook and Instagram!



Renfrew Museum and Park



@renfrewmuseumpark



RENFREW COMMITTEE, INC.

Board of Directors

Laurie Hovermale, President
Bruce McLaughlin, Vice President
Patti McLaughlin, Treasurer
Kari Saavedra, Secretary

Dade Royer
Harold Mumma
Val Dick

Staff

Becky LaBarre
Executive Director & CEO
Steve LaBarre
Manager of Visitor Experiences
Kirsten Lamb
Visitor Experiences
Representative
Gene Kelley
Manager of Buildings and
Grounds

A Message from our Executive Director:



Spring is finally here, friends! There's nothing more refreshing than enjoying a walk around the farmstead as the last chill of winter gives way to the warmth and promise of another season here at Renfrew. Trees are budding, the first blooms are displaying their extraordinary color, and new life is emerging from its slumber.

We recently broke ground in the heirloom gardens, preparing the soil for this year's planting, and it brought to mind thoughts of how privileged we are to be a place that cultivates inspiration for so many. Digging deep into Renfrew's rich history, cultural and agricultural heritage, meaningful sense of place, and engaging programming, you'll find seeds of inspiration everywhere. There's always a chance to gain fresh perspectives, develop new skills, and learn at Renfrew.

In this issue of *der Wetterhahn*, we invite you to "Spring Into Something New: Cultivate Inspiration This Season" and discover a host of inspiring happenings at the farm. We'll officially kick off the 48th tour season on Saturday April 15, 2023 with our annual Opening Day Celebration (see page 5). Enjoy free tours of the Royer Farmstead along with springtime-themed historic demonstrations and activities, horse-drawn wagon rides, and more. Be sure to join us at 2:00pm for the ceremonial groundbreaking of the soon-to-be-constructed Renfrew Mill (learn more on pages 3 & 4). Closing out the month of April, we'll celebrate the 151st Arbor Day with a ceremonial tree planting on April 28th at 2:00pm (see page 7).

Encourage your creativity to germinate at upcoming workshops on Historic Hearth Cooking (page 9) and Pennsylvania German Scherenschnitte (page 8), grow your physical stamina with us at Yoga Flow (page 7), and nourish your soul with a fresh selection of musical performances at the 2023 Judy Elden Memorial Summer Concert Series (page 6). You can also nurture your appreciation for the decorative arts with our artifact spotlight on the work of silversmith Rebecca Emes (page 10) and view even more of our incredible collections on an hour-long guided Farmstead Tour, resuming for the season on April 19th.

Lastly, you "butter" not miss our feature on dairying in Early America (page 2).

Root yourself in Renfrew this season with experiences you're sure to love. See you around the farmstead!

Sincerely,

Rebecca J. LaBarre

There's Nothing "Butter"

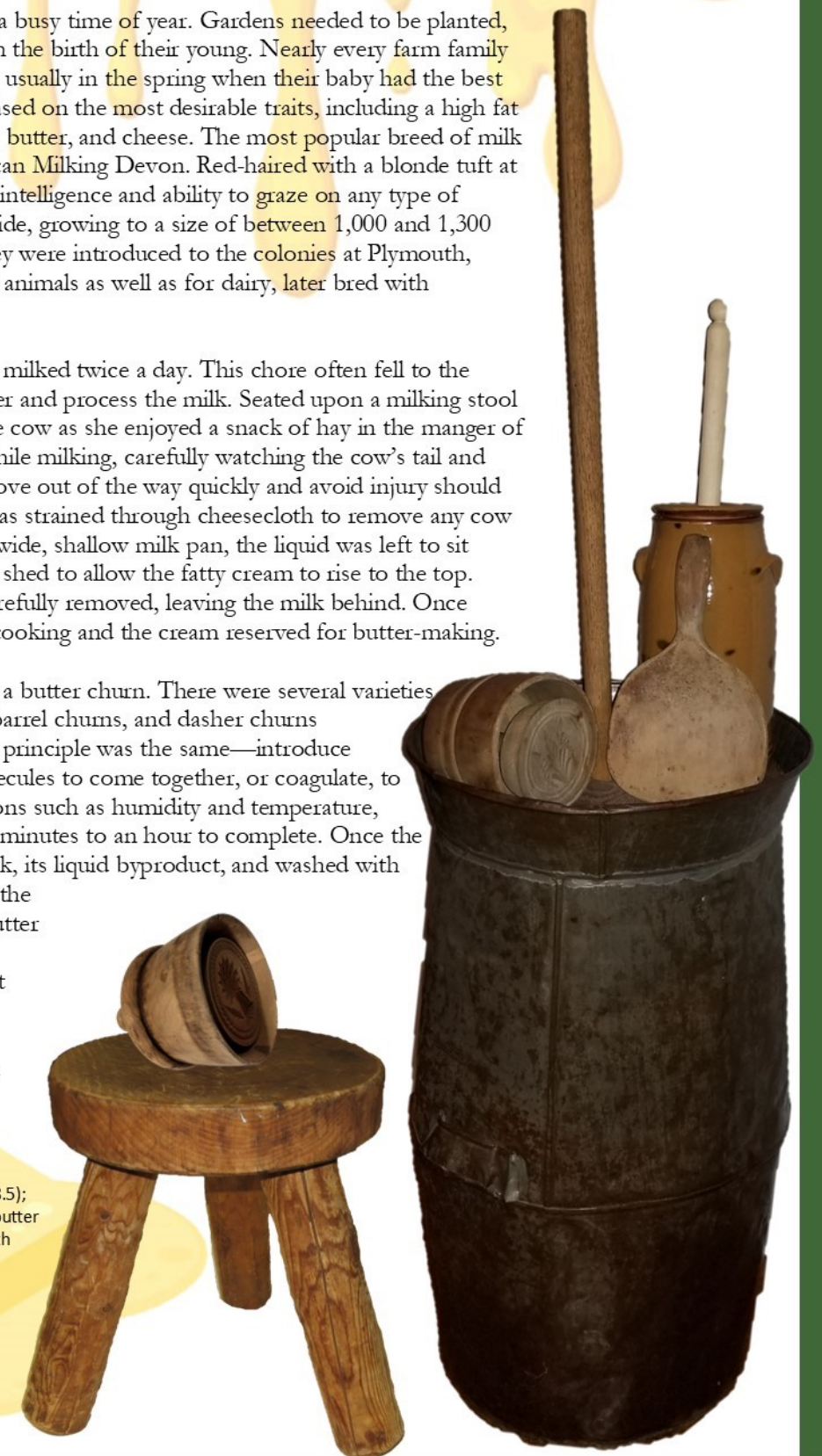
Dairying on the Early American Farm

Spring on the Early American farmstead was a busy time of year. Gardens needed to be planted, fields had to be plowed, and livestock assisted with the birth of their young. Nearly every farm family kept a dairy cow who was bred to calf once a year, usually in the spring when their baby had the best chance of survival. Bovine breeds were selected based on the most desirable traits, including a high fat content in the milk which produced quality cream, butter, and cheese. The most popular breed of milk cow during the nineteenth century was the American Milking Devon. Red-haired with a blonde tuft at the end of their tail, Devons were valued for their intelligence and ability to graze on any type of pasture or fodder. They were also on the smaller side, growing to a size of between 1,000 and 1,300 pounds. Originally from Devonshire, England, they were introduced to the colonies at Plymouth, Massachusetts in 1623. Devons were used as draft animals as well as for dairy, later bred with shorthorn cattle to increase milk production.

After birthing her calf, a dairy cow would be hand milked twice a day. This chore often fell to the women or children of the family, who would gather and process the milk. Seated upon a milking stool (see below), they would place a bucket beneath the cow as she enjoyed a snack of hay in the manger of the milking pen. The farmer would remain alert while milking, carefully watching the cow's tail and rear flanks for any signs of agitation in order to move out of the way quickly and avoid injury should she kick. Once the pail was filled, the fresh milk was strained through cheesecloth to remove any cow hair, straw, insects, or other debris. Poured into a wide, shallow milk pan, the liquid was left to sit inside a cool location such as a milkhouse or dairy shed to allow the fatty cream to rise to the top. Using a wooden or tin skimmer, the cream was carefully removed, leaving the milk behind. Once separated, the milk could be used for drinking or cooking and the cream reserved for butter-making.

When enough cream was saved, it was placed into a butter churn. There were several varieties available including paddle churns, rocker churns, barrel churns, and dasher churns (see right). Regardless of the technology, the basic principle was the same—introduce friction and air to the cream and allow the fat molecules to come together, or coagulate, to form a solid mass. Depending on weather conditions such as humidity and temperature, butter churning could take anywhere from twenty minutes to an hour to complete. Once the butter formed, it was separated from the buttermilk, its liquid byproduct, and washed with cool water until it ran clear. Any buttermilk left in the fat could spoil and turn the butter rancid. Fresh butter could be eaten immediately or mixed with salt for long-term preservation, molded for presentation at table or for commercial sale using decorative carved "butter molds" (see right). Salted butter stored in crocks and kept in a cool place could last for several months up to a year.

Historic dairying equipment, left to right:
Carved butter mold, c.1850-1880 (Object #PL2018.5);
Milking stool, 19th century (Object #2007.25); Tin butter
churn, wooden mold and paddle, c.1850-60 with
reproduction redware tabletop churn
(Courtesy of LaBarre Family Collection).



Grinding On: Renfrew Mill Project Update &



Borough crews constructing a new access lane to the Renfrew Mill, March 2023.

The Renfrew Mill Project has been “grinding on” with preparations necessary to begin building construction this spring. Utilities work took place during the fall and winter of 2022 with installation of electric and water lines. Site access has been provided by a gravel lane extending east to west through the hayfield, curving south along the Buckey Trail, then returning southwest back to Fahnestock Lane.

Renfrew Committee, Inc. has engaged the services of GRC General Contractor, Inc. of Waynesboro to oversee construction of Phase I which will include the main three-story mill building and the small ancillary pump house structure to contain restrooms and mechanical room for the mill’s recirculating pump. GRC plans to begin excavation of the foundation in mid-April with work expected to conclude in early 2024. The interior

millworks (Phase II) will be built by master millwright Ben Hassett of B. E. Hassett Millwrights, Inc. of Louisville, Kentucky at a later date.

The project is being partially funded through a generous donation by benefactor James Luty. Renfrew has also secured a \$1M bridge loan from Patriot Federal Credit Union of Waynesboro to finance cashflow ahead of reimbursement via a Redevelopment Capital Assistance Program (RCAP) grant awarded through the Pennsylvania Office of the Budget.

Visitors to Renfrew’s grounds should be prepared for active construction this season, which may result in closure and/or detours of some trails. Signage will be placed around the park and project information will be shared as it is made available on our website at www.RenfrewMuseum.org/Mill. We ask you to please pardon our mess and be patient with us as Renfrew embarks on this very exciting addition to the farmstead. We can’t wait to share it with you!

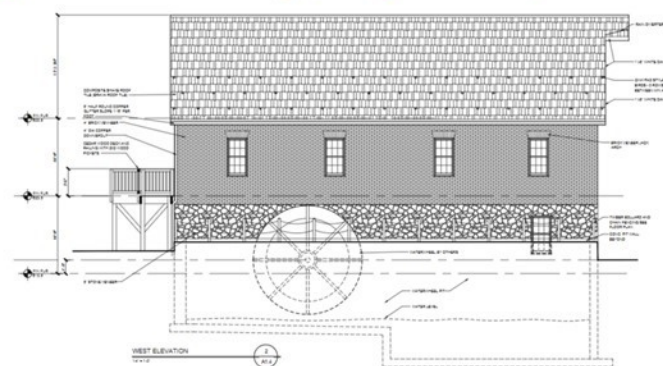


Architect and project manager, Don Smith of Smith Co. (left), addresses the Renfrew Mill Project Team during an introductory site walk on March 21, 2023.

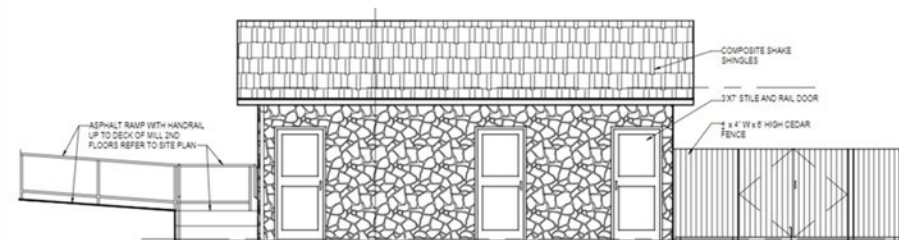
Architectural Elevations by Smith Co. Design and Architecture, Waynesboro, PA.



East elevation with view of entrance adjacent to walking trail. Mill building is to be three stories with additional door on the south elevation at grade and a third entrance via ramp to the second floor at the north.



West elevation featuring custom-made reproduction overshot Fitz Waterwheel, an all-metal mechanism introduced around 1840.



East elevation of the pump house containing two single-person restrooms and recirculating pump for the mill’s waterwheel. Mechanical yard is fenced at right.



South elevation showing wheel pit and entrance off Mill Stone Trail.

Recognizing Our Mill Project Team



Redevelopment Capital Assistance
Program Grant Administer



Grantee



Renfrew
MUSEUM & PARK
Sub-Grantee



General Contractor



Bridge Loan Lender



Grant Administrator



LOUISVILLE, KY

Millwright



Architect & Project Administrator

James Luty, Benefactor

William J. Sheppard,
Historic Archeologist

Renfrew Committee, Inc.
Board of Directors



R. Lee Royer & Associates

Engineering Services



TRIAD ENGINEERING, INC.

Renfrew Mill Committee

Dade Royer, Chair
Gene Kelley
Becky LaBarre
Steve LaBarre
James Luty
Mark McLaughlin
C. Harold Mumma
Douglas Parks
Kari Saavedra
William Sheppard

You are cordially invited!

Mill Project Groundbreaking Ceremony

Saturday, April 15, 2023 at 2:00pm

Intersection of Mill Race Trail & Mill Stone Trail

Join us as we officially kick-off construction with a ceremonial groundbreaking at the future site of the
Renfrew Mill.



Programs & Events



Presented with generous support
from Lead Sponsor

McLaughlin's
Energy Services
Heating Oils & Propane Gas
Waynesboro, PA | 717-762-5711 | mclheat.com



Renfrew
MUSEUM & PARK

48th Annual Opening Day Celebration

Saturday, April 15, 2023 from 12:00pm to 4:00pm

Free Admission · Fun for all ages! · Tours & More

www.RenfrewMuseum.org/OpeningDay

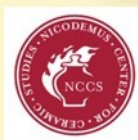
Celebrate the annual opening of Renfrew for its 48th operating season on Saturday, April 15, 2023! Free family-friendly activities include tours, horse-drawn wagon rides, historic demonstrations, period games, and so much more on our 107-acre historic Pennsylvania German farmstead in beautiful Waynesboro. Our Visitors Center museum shop and exhibit galleries will also be open along with the Royer farmstead outbuildings for all to enjoy.

Be sure to join us at 2pm for a ceremonial groundbreaking of the soon-to-be-constructed Renfrew Mill. Spring into a brand new season with Renfrew. See you there!

- ♦ Tour Renfrew's historic structures on the front farmstead including the 1812 Royer House, Summer Kitchen, Milk House, and Smoke House.
- ♦ Encounter docent guides eager to share the fascinating story of Renfrew with you.
- ♦ Living history demonstrations offered throughout the day.
- ♦ Hop aboard a horse-drawn wagon ride
- ♦ Historic Toys and Games
- ♦ Butter-making, Dairying, & Spring Food Preservation
- ♦ Historic Fly Fishing
- ♦ Mill Project Groundbreaking Ceremony



**Purchase
Food & Drink
12:00pm - 4:00pm
Delaney's Delicacies**



Check out what's happening this season at the Nicodemus Center for Ceramic Studies. Learn more about this fellow nonprofit and their unique brand of hands-on programming downtown at the Ceramic Arts Center of Waynesboro.

Stop by Patriot's tent to learn about membership and the great range of financial services they offer. Plus, you may even pick up some free swag. Patriot is a great supporter of Renfrew and other nonprofits in the community.



2023 Judy Elden Memorial Summer Concert Series

Thursday evenings June through July

Sit back and enjoy live music in a beautiful setting on the lawn behind the Museum House. All concerts begin at 6:30 p.m. and are free to the public. Bring a chair or blanket to sit on and kindly remember that Renfrew is a non-smoking facility and alcohol is prohibited on the property.



Evan Crider
June 1



Tresa Day
June 8



Lucky Punk
June 15



Rebekah Foster
June 22



Frank 'n' Bob
June 29



Note Riders
July 6



Drew Adams
July 13



Jon Ingels
July 20



East of Antietam
July 27



Welcome Tent Concessions

Stop by the Welcome Tent, located west of the Royer Milk House, during concert evenings for info on upcoming programs and to peruse our selection of museum shop merchandise. Items include Renfrew apparel, children's toys, pet items, and more. Assorted pre-packaged light snacks and bottled water are available for \$1.00 each. We are able to accept payment by cash or credit card. Every purchase supports the mission of Renfrew Museum and Park. Thanks for your support!

Learn more online at: RenfrewMuseum.org/SummerConcerts

Mark Your Calendar!

(More info and registrations to follow in future issues.)

- ♦ **#RenfrewOnTheRoad: Gettysburg Civil War Relic and Collector Show**
Saturday, June 24 & Sunday, June 25, 2023
- ♦ **8th Annual Oktoberfest Fundraiser**
Saturday, September 16, 2023 from 12:00-4:00pm
- ♦ **#RenfrewOnTheRoad: 42nd Annual Pippinfest**
Sunday, September 24, 2023 from 9:00am-4:00pm
- ♦ **#RenfrewOnTheRoad: Mainstreet Waynesboro Market Day**
Saturday, October 7, 2023 from 9:00am-4:00pm
- ♦ **"Treasures from the Collection" Members Only Event**
Thursday, October 12, 2023 Reception 6:30pm, Program 7:00pm
- ♦ **Christmas on the Farm**
Friday, December 1, 2023 and Saturday, December 2, 2023 from 3:00-8:00pm both days.
- ♦ **Historic Wreath Making Workshop**
Saturday, December 9, 2023 from 9:00am-12:00pm.



Renfrew Museum and Park Arbor Day Tree Planting

Friday, April 28, 2023 at 2:00pm

Founded in 1872 by J. Sterling Morton in Nebraska City, Nebraska, National Arbor Day is observed annually on the last Friday in April. On the very first Arbor Day, April 10, 1872, an estimated one million trees were planted!

Renfrew Museum and Park celebrates Arbor Day 2022

Each year, thousands around the country celebrate together by planting trees in their communities. Join the Borough of Waynesboro Council, Shade Tree Commission, and Renfrew Committee, Inc. at Renfrew Museum and Park on Friday, April 28, 2023 at 2:00pm for a ceremonial planting and dedication of an Eastern Redbud



We thank our friends at Lowe's Home Improvement of Waynesboro, PA for their generous donation.



Complementary Nuttall Oak seedlings available from Bartlett Tree Experts (while supplies last).

For more information visit
www.RenfrewMuseum.org/ArborDay

Yoga Flow @ Renfrew MUSEUM & PARK

Friday Mornings, June-August 2023
9:00am to 10:00am • Free Admission

Guided by Certified Instructors
Wendy Royer & Laurie Hovermale



www.RenfrewMuseum.org/YogaFlow



#RenfrewOnTheRoad: Gettysburg Civil War Collectors Show

Saturday, June 25 9:00am-5:00pm
& Sunday, June 26 9:00am-3:00pm
Allstar Events Complex, Gettysburg, PA

Join Renfrew's staff at the Allstar Events Complex, Gettysburg, PA for the Gettysburg Civil War Collectors Show! Look for our booth among this annual gathering of 300+ dealers of pre-1900's antique militaria, arms, and historical artifacts. Renfrew will be showcasing a display of historical artifacts from the museum collection as well as providing information about the history of our 200+ year old Pennsylvania German farmstead and upcoming programs. We might even have a few live social media postings throughout the weekend. Stop by, snap a pic, and say hello!

Visit <https://www.gbpa.org/event/annual-civil-war-relic-show>
to learn more about the show.



Scherenschnitte Workshop

Saturday, July 29
9:00am - 12:00pm
\$25 per person / \$15 for Renfrew Members

Learn the traditional
Pennsylvania German
folk art of paper cutting!

Scherenschnitte artisan and instructor, Bill Hammann, will teach an introductory class on how to create your own work of art inspired by historic imagery. Students will be provided with all required supplies including cutting mat, hobby knife and blades, paper, and patterns.

Class size is limited to 15 people.

Recommended for participants ages twelve (12) and up.
Children under 18 must be accompanied by a responsible adult also registered for the program.

Register at www.RenfrewMuseum.org/PresentationAndWorkshops

Historic Hearth Cooking Lessons

Personalized instruction for groups of up to four guests



Renfrew MUSEUM & PARK  **Now Booking for the 2023 Season!**
www.RenfrewMuseum.org/HistoricHearthCooking

HISTORIC HEARTH COOKING LESSONS

\$300.00 for a 3-hour session

Select Dates Only, 10:00am to 1:00pm

One to Four Participants

Pre-registration is required.

Private Lessons for up to Four Guests

Enjoy an intimate, hands-on culinary experience inside Renfrew's 1814 Summer Kitchen. Guests will be taught the basics of early nineteenth-century open hearth cooking techniques by preparing their own period meal under the guidance of our domestic life historians in period dress. Menu selections reflect the seasonal ingredients available to local families like the Royers during the early nineteenth century and can be tailored to participants' dietary needs. You will learn about historic hearth equipment, how it works, and use it safely to create a delicious and hearty repast. Nothing tastes better than a hearth-cooked meal made by your own two hands! Select from one of the dates listed below for your personalized instruction in historic cookery today.

Select Your Date!

Monday, May 1

Saturday, May 13 (Sold)

Saturday, June 10

Tuesday, June 13

Saturday, September 9

Tuesday, September 26

Monday, October 2 (Sold)

Saturday, October 14



Silver Coffeepot and Stand, manufactured Rebecca Emes & Edward Barnard, English c. 1808 (Object #1976.798a-b)

Sitting on the sideboard in the Royer House Dining Room is a fine silver pot nestled in a matching stand. Dating to the early nineteenth century it served coffee, making it both beautiful and functional. Serving vessels such as this were kept at a table or on a nearby sideboard for easy access. The coffee was brewed elsewhere, then transferred into the pot. A flame was lit underneath by filling the stand's burner with whale oil or tallow (animal fat) and placing a thin piece of cotton rope wicking inside. The wick drew the oil upwards through an opening in the burner, allowing the flame to keep the liquid contents of the vessel at the right temperature for drinking.

Just as fascinating as how this serving vessel functions is what is impressed into the underside of the pot—the silver hallmark initials “RE” over “EB”—representing Rebecca Emes (sometimes *Eames*) and Edward Barnard. Who is Rebecca Emes? How did her name become synonymous with the production of English Silver? What is her connection to silversmithing? Join us later this year to learn more about the life and work of Rebecca Emes, Federal Era silver production, and Early American silversmithing here in Franklin County.



Neoclassical motifs, popular at the turn of the nineteenth century, adorn the surface of this exquisite coffeepot on stand, acquired by Emma Geiser in October 1942—just months before her wedding to Edgar Nicodemus. Restrained and delicate, the silverwork is accented by a carved ebonized wood handle.

Measures 13 1/4" (33.6 cm) high by 7" (17.8 cm) wide.

A
R
T
I
F
A
C
T

S
P
O
T
L
I
G
H
T