

Renfrew MUSEUM & PARK



Winter 2023

“Walk Back In Time”

der Wetterbahn

The Weathervane: News & Updates from the Farm

Our mission is to preserve, enhance, promote, and interpret the Royer family Pennsylvania German Farmstead, the Nicodemus and Bell collections, and the surrounding Park.

Enjoying Winter's Wonders: Take Time to Learn, Explore, & Taste what's new at Renfrew this Season!

In this issue:

- ♦ A Message from Our Executive Director
- ♦ What Time is It? Artifact Spotlight Time!
- ♦ Upcoming Programs and Events

First in Our Hearts: A One Man Show About George Washington

#RenfrewOnTheRoad: 26th Annual Business Expo

Historic Hearth Cooking Lessons

2023 Volunteer Info Sessions

Farmstead Taste & Tour Returns — and more!

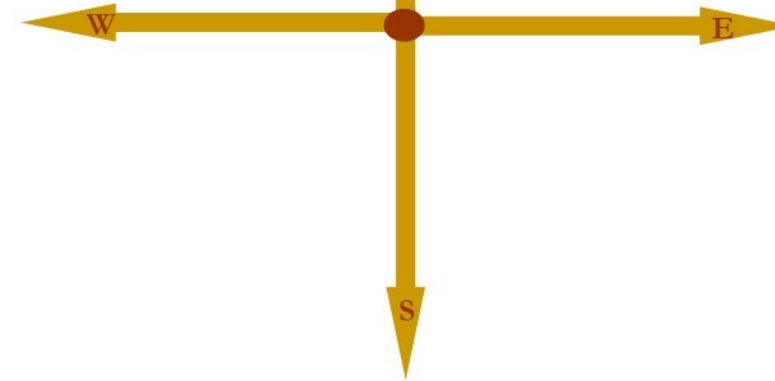
Visit us at www.RenfrewMuseum.org

Renfrew
MUSEUM & PARK



1010 East Main Street
Waynesboro, PA 17268

Address Service Requested



Non-Profit Org.
U.S. Postage
PAID
Waynesboro, PA
17268
Permit No. 405

Renfrew Administrative Staff Contacts

Becky LaBarre
Executive Director & CEO
becky.labarre@renfrewmuseum.org

Steve LaBarre
Manager of Visitor Experiences
steve@renfrewmuseum.org

Gene Kelley
Manager of Buildings & Grounds
gene@renfrewmuseum.org

 (717) 762-4723
info@renfrewmuseum.org
www.RenfrewMuseum.org

HOURS OF OPERATION
Summer (Mid-April—Mid-October)
Weds.-Fri. 9am—4pm; Sat. 1pm—4pm
Winter (Mid-October—Mid-April)
Tues.-Fri. 9am—4pm
Park Grounds Open Daily, Dawn to Dusk

Our Mission

To preserve, enhance, promote, and interpret the Royer family Pennsylvania German farmstead, the Nicodemus and Bell collections, and the surrounding Park.

Our Vision

To be a welcoming and memorable destination where everyone can walk back in time.

Our Values

Integrity — With honesty and truth, we will adhere to the highest moral and ethical standards in all our endeavors.

Authenticity — We will interpret with historical accuracy all of our exhibits, collections, programs, and events.

Excellence — We will be exceptional in everything we do.

Follow Us on Facebook and Instagram!



Renfrew Museum and Park



@renfrewmuseumpark



RENFREW COMMITTEE, INC.

Board of Directors

Laurie Hovermale, President
Bruce McLaughlin, Vice President
Patti McLaughlin, Treasurer
Kari Saavedra, Secretary

Dade Royer
Harold Mumma
Val Dick

Staff

Becky LaBarre
Executive Director & CEO
Steve LaBarre
Manager of Visitor Experiences
Kirsten Lamb
Visitor Experiences
Representative
Gene Kelley
Manager of Buildings and
Grounds

A Message from our Executive Director:



Welcome to 2023!

It's wintertime here at Renfrew and we're busy making plans for our upcoming tour season, which officially kicks off on April 15, 2023 (Save the date for our 48th Opening Day Celebration, see page 8). Our staff and volunteers are hard at work with off-season chores and preparations including updates and repairs to our buildings and grounds, research, curatorial cleaning, collections inventories, program planning and more! While we're closed to tours for the time being, don't forget that Renfrew is still open for business - even in the off-season. It's a great time of year to engage with Renfrew as you'll discover with issue's theme *Enjoying Winter's Wonders: Take Time to Learn, Explore, & Taste what's new at Renfrew this Season!* So, shake off those winter blues, and join us for all the exciting things happening at everyone's favorite farmstead as we venture into a new year at Renfrew Museum and Park.

Winter is a time for wonder. Whether it's taking in the rustic beauty of our historic farmstead with a wintery walk in the crisp, fresh air or marveling at the rich, authentic stories unveiled by our artifact collections—there's something for everyone to capture the imagination, spark curiosity, and inspire a sense of awe to combat the dreary days.

Our feature article, *What Time Is It? Artifact Spotlight Time!* (pages 2-4), beautifully illustrates a recent acquisition of personal effects once belonging to nineteenth century clockmaker Peter Grumbine. Humanizing his story through material culture descended through his family, you're sure to be as intrigued as I was to see how these everyday objects provide a glimpse into the life and times of one of Waynesboro's historic craftsmen.

This winter we'll dig deeper into the life of another Early American, President George Washington, with a very special performance by actor and historian Jeff Greenawalt titled *First In Our Hearts* (page 5), gaining new perspective on Washington "as the thinking, feeling (and fallible) human being he was" with this first-person portrayal.

And if you're hungry for unique dining experiences, we are delighted to announce the return of Renfrew's popular *Farmstead Taste & Tour* program after nearly a year hiatus (page 10) as well as the schedule for our 2023 Historic Hearth Cooking Lessons (page 7). You can also feed your mind with Field Trips and Group Tours (page 8).

This winter, take time to learn, explore, and taste all we have to offer at Renfrew Museum and Park. Looking forward to seeing you soon!

Sincerely,

Rebecca J. LaBarre



1836 Grumbine Tall case clock originally owned by Christian H. Frantz of Waynesboro, PA. Donated by C.G. Frantz of Sugar Grove, IL 2016. Renfrew Museum Collection

What time is it?

Artifact Spotlight Time!

Those familiar with Renfrew Museum and Park's extensive collection of early 18th and 19th century decorative arts will recognize the many tall case clocks owned by the museum. Among the examples on display are two made by Waynesboro silversmith, jeweler, watchmaker, and clockmaker Peter Grumbine (December 2, 1806-March 30, 1867).¹

Grumbine was born in Frederick County, Maryland to Pennsylvania German parents Johannes Grumbine (1782-1827) and Sophia Weber (1788-unknown) originally of Lancaster. By 1827, Grumbine had relocated to Waynesboro, Franklin County, and was active in his trade with a shop on the south side of East Main Street, just east of the Square.² He married Virginia-born Anna E. Summerville (1802-1873) at Waynesboro and the couple went on to have three children: John Griffith Grumbine (1832-1906), William H. Grumbine (1834-1913), and Lydia A. Grumbine (1839-1916). Lydia became the wife of Charles Frederick Bell (1840-1916), son of master potter John Bell (1800-1880), joining together two of Waynesboro's prominent artisan families.

Peter Grumbine's successful career spanned four decades with service to many local and regional customers. Regular advertisements in the Chambersburg *Valley Spirit* weekly newspaper for the period 1849-1851 informed would-be clients that Grumbine was "prepared to execute all orders in his line of business at the shortest notice and on the lowest possible terms according to the times, and *no deception*."

In 1857, son William joined the family business, and the shop was moved to the south side of West Main Street, about halfway between the Square and South Potomac Avenue where they worked together for the next decade. Peter Grumbine died at his home on Saturday, March 30, 1867 following a prolonged illness and is buried in Waynesboro's Green Hill Cemetery in a family plot shared with the Bells.³ His grave, marked by a granite monument erected in 1901, is beside that of his wife Anna along with daughter Lydia and Charles F. Bell. The beauty of his work is the lasting legacy of Grumbine's talent and craftsmanship.

1 Grumbine is listed as "silversmith, Freeman" in the 1827 tax record for Washington township, Franklin County. For the next twenty years he is called alternatively watchmaker and clockmaker, having no property and taxed only on his trade. Grumbine's occupation is listed as a silversmith in the 1842 Septennial Census. He is termed a silversmith with a \$100 yearly in 1846. He is listed among "Watch Makers and Jewellers [sic]" in *Boyd's Pennsylvania State Business Directory* of 1861 (p. 1232).

2. Grumbine's advertisements in the Waynesboro Village Record over the years:
"Watch and Clockmaker Next door to Detrick's saddle shop", September 1849.
"His is still at his old stand on the diamond." July 7, 1853.
"CLOCK AND WATCH ESTABLISHMENT: Peter Grumbine and son respectfully announce the opening of a new shop one door East of Miss Seider's Millinery Store and nearly opposite the Saddler's Shop of William P. Weagly—where they repair, sell and manufacture all sorts of good in their line." May 28, 1857.

3. "Died at his residence in this place on Saturday last, after a lingering illness of several months duration, Mr. Peter Grumbine, aged 60 years-3 mo.-28 days." Waynesboro Village Record, April 5, 1867.



Portrait of Peter Grumbine c.1830. Courtesy of John Grumbine.



Object #2022.002.2a-c Renfrew Museum Collection

Grumbine Descendant Donates To Renfrew



These glasses were our great Grandfather Peter Grumbine of Waynesboro and his father* was Peter Grumbine of Hanover Pa and 2nd Peter Grumbine was a grandson of Leonard Grumbine of Shaffertown near Hanover and Lancaster Pa. that came to America in 1754 on the ship Brother that arrived at the port of Phila.

"These glasses were our great Grandfather Peter Grumbine of Waynesboro and his father* was Peter Grumbine of Hanover Pa and 2nd Peter Grumbine was a grandson of Leonard Grumbine of Shaffertown near Hanover and Lancaster Pa. that came to America in 1754 on the ship Brother that arrived at the port of Phila. Pa."

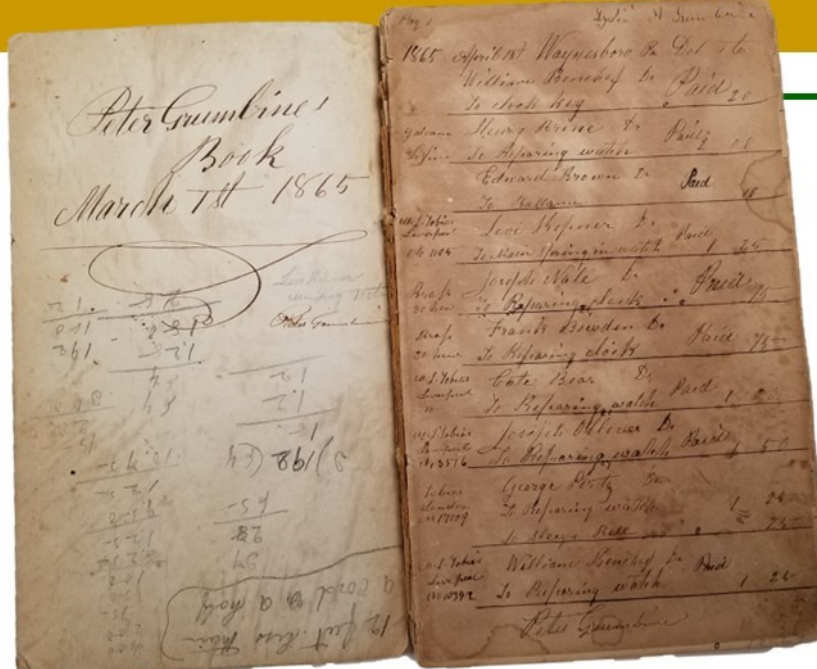
—Jennie Mae Grumbine Flach (1891-1969), paternal great aunt of donor
*Peter Grumbine (1761-1861) was Peter's (clockmaker) grandfather. Jennie Mae left out one generation: Johannes Grumbine (1782-1827). All descend from Leonard (1733-1782).

Renfrew Museum and Park was delighted to welcome Brenda Grumbine Parry of Santa Rose Valley, California on October 7, 2022. Brenda had contacted the museum several months prior asking if the institution would be interested in receiving personal items from her ancestor, historic Waynesboro clockmaker, jeweler, and silversmith Peter Grumbine. Renfrew gladly accepted her generous gift and is honored to be selected as the steward of these treasured family heirlooms. The donation included two 1860's leather-bound account books, a pair of spectacles in tin case, and newspaper.

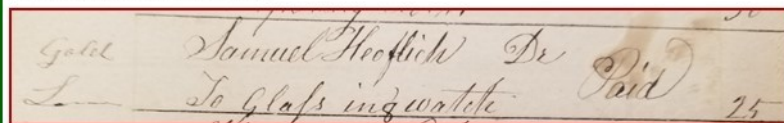
Peter Grumbine, WATCH & CLOCK MAKER,
R has just returned from the city, with a splendid assortment of **CLOCKS & WATCHES**, and the cheapest and best **JEWELRY** that has been shown in town for some time. He invites the ladies and gentlemen to call and see for themselves.
Clocks and watches carefully repaired on the shortest notice, and warranted to perform well or no charge. Thankful for past encouragement, he returns his thanks to his old customers and friends. He is still at the old stand near the Diamond.
Waynesboro, July 7, 1853.—



Object #2022.002.1
Renfrew Museum Collection



Object #2022.002.3
Renfrew Museum Collection



Object #2022.002.4
October 15, 1857 issue of the
Waynesboro Village Record
belonging to Peter Grumbine
who advertised on the back page
(enlarged below).
Renfrew Museum Collection

CLOCK AND WATCH Establishment?
PETER GRUMBINE & SON respectfully announce to the citizens of Waynesboro and the public generally that they have opened a new shop in the room one door East of Miss Seider's Millinery Store; (in the same building) and nearly opposite the Saddler Shop of Wm. P. Weagly; where they are now prepared to **REPAIR CLOCKS** and **Watches and FINE JEWELRY**, of every description, on the most reasonable terms. All work warranted.
As one of the firm has had five years experience in one of the largest Watch, Clock, and Jewelry Stores in Baltimore City, they feel confident that they can give general satisfaction, and respectfully solicit a call from such as desire work done in their line of business.
May 28.



The smaller of the two account books, measuring 4-3/4" high by 3" wide, contains transactions dating between November 3, 1863 and May 11, 1865. The second, larger ledger measures 7-1/2" high by 5" wide and dates between March 1, 1865 to February 11, 1866. Transactions recorded reflect the everyday work Grumbine undertook from local and regional customers, including many personalities well-known to Renfrew and the greater Waynesboro community.

Listed among the clients are potter John Bell (above) who received repairs to a timepiece at a cost of fifty cents, as well as Samuel Hoeflich (left), step-grandfather of Renfrew's founder Emma Nicodemus, who had the glass replaced in his watch for twenty-five cents.



Other descendants of nineteenth-century Waynesboro clockmaker, jeweler, and silversmith, Peter Grumbine, visited Renfrew in 2019! Above: Judy and Joe McCullen. Right: John Grumbine and wife Theresa, are pictured holding a pair of portraits of Peter Grumbine and his wife Anne from about 1827.





Programs & Events

First In Our Hearts



A One Man Show About George Washington
Presented by Actor & Historian Jeff Greenawalt

Tuesday, February 21, 2023 ♦ 6:30pm to 8:30pm

\$15 per person / \$10 for Renfrew Members. Limit 40 Guests.
Reception with light refreshments followed by performance.

www.RenfrewMuseum.org/PresentationsandWorkshops



Renfrew
MUSEUM & PARK



As members of the Founding Generation, the Royer Family and their neighbors were active participants creating our nation and the shaping of Early America. Each had an important part to play with no other historical figure from that period having as much impact on both his contemporaries, and every generation of Americans that's followed, than George Washington.

Enjoy a very special evening with actor and historian Jeff Greenawalt who will embody the spirit of Washington in his one-man theatrical performance titled *First In Our Hearts*. Bringing this American icon and legend to life as the thinking, feeling (and fallible) human being that he was, Greenawalt's first-person portrayal of Washington will introduce you personally to the Father of Our Country as he neared the end of his public service.

The program will be preceded by a reception with light refreshments in the Renfrew Visitors Center exhibit gallery beginning at 6:30pm, followed by welcoming remarks from Renfrew's Manager of Visitor Experiences, Steve LaBarre, starting at 7:00pm in the Wagon Shed Room. We'll briefly contextualize the Royer family's own connection to the Revolutionary War and Federal Eras before welcoming President Washington to Renfrew!

#RenfrewOnTheRoad

Join Renfrew Museum and Park on
our adventures away from the farmstead!



www.RenfrewMuseum.org/RenfrewOnTheRoad

Greater Waynesboro Chamber of Commerce

26th Annual Business Expo

Saturday, February 18, 2023 from 8:00am—11:30am

Join Renfrew Museum and Park on our adventures away from the farmstead!



Our #RenfrewOnTheRoad outreach initiative takes us to the most interesting places where we explore fellow historic sites both near and far, community happenings, local businesses, attractions, conferences, antique shows, street festivals, and more! Sometimes our outings are planned (see below), but sometimes they're a total surprise – you never know where we'll show up!

Join us at Greater Waynesboro Chamber of Commerce's 26th Annual Business Expo! Learn about all that's available in the community from local businesses, organizations, and nonprofits. Look for Renfrew in the cafeteria where we'll be sharing information about our upcoming 48th operating season and providing historic demonstrations. You won't want to miss it!

Mark Your Calendar!

(More info and registrations to follow in future issues.)

- ♦ **Judy Elden Memorial Summer Concerts in the Park Series**
Thursday Evenings
June-July 2023
from 6:30-8:00pm
- ♦ **#RenfrewOnTheRoad: Gettysburg Civil War Relic and Collector Show**
Saturday, June 25 &
Sunday, June 26, 2023
- ♦ **Workshop: Scherenschnitte**
Saturday, July 29, 2023
from 9:00am-12:00pm
- ♦ **8th Annual Oktoberfest**
Saturday, September 16, 2023 from 12:00-4:00pm
- ♦ **#RenfrewOnTheRoad: Mainstreet Waynesboro Market Day**
Saturday, October 7, 2023
from 9:00am-4:00pm
- ♦ **"Treasures from the Collection" Members Only Event**
Thursday, October 12, 2023 Reception: 6:30pm,
Program: 7:00pm
- ♦ **Christmas on the Farm**
Friday, December 1, 2023
and Saturday, December 2, 2023 from 3:00-8:00pm
both days.

Historic Hearth Cooking Lessons

Personalized instruction for
groups of up to four guests

Renfrew  **Now Booking for the 2023 Season!**
MUSEUM & PARK www.RenfrewMuseum.org/HistoricHearthCooking

HISTORIC HEARTH COOKING LESSONS

\$300.00 for a 3-hour session

Select Dates Only, 10:00am to 1:00pm

One to Four Participants

Pre-registration is required.

Private Lessons for up to Four Guests

Enjoy an intimate, hands-on culinary experience inside Renfrew's 1814 Summer Kitchen. Guests will be taught the basics of early nineteenth-century open hearth cooking techniques by preparing their own period meal under the guidance of our domestic life historians in period dress. Menu selections reflect the seasonal ingredients available to local families like the Royers during the early nineteenth century and can be tailored to participants' dietary needs. You will learn about historic hearth equipment, how it works, and use it safely to create a delicious and hearty repast. Nothing tastes better than a hearth-cooked meal made by your own two hands! Select from one of the dates listed below for your personalized instruction in historic cookery today.

Select Your Date!

Monday, May 1

Saturday, May 13

Saturday, June 10

Tuesday, June 13

Saturday, September 9

Tuesday, September 26

Monday, October 2

Saturday, October 14



48th Opening Day Celebration

Saturday, April 15, 2023

12:00pm to 4:00pm

Free Admission



Planning is underway for this free event to kick off our new season and enjoy springtime at Renfrew. Activities include Museum House tours, historic demonstrations, wagon rides, family fun area, and more! Our museum shop and Visitors Center galleries will be open along with the Royer farmstead outbuildings for all to enjoy. We look forward to welcoming you to Renfrew Museum and Park for our 2023 season!



Stay tuned for more
information in the coming
weeks and check
[www.RenfrewMuseum.org/
OpeningDay](http://www.RenfrewMuseum.org/OpeningDay)
for more updates

NOW BOOKING! Field Trips and Group Tours

Enhance your visit to Renfrew Museum and Park with an engaging tour experience! Our knowledgeable staff and docents are here to share the many fascinating authentic stories of our centuries-old Pennsylvania German farmstead with individuals, families, and groups. Select from the menu above to choose the tour option that's right for you. We hope to see you soon!



For Teachers and Students: Renfrew Museum and Park is a great place to bring your students for a fun and educational experience! Our 107-acre historic farmstead lends itself to unique, purpose-driven discussion and hands-on activities to meet your curriculum needs. Renfrew offers several field trip/school group Adventure Experience Packages to choose from. Select the option that best meets your students' grade and interest level.

For Organizations and Groups: Our scenic 107-acre historic farmstead lends itself to an enjoyable day out for guests of all ages and interest levels. Recommended for organized groups such as travel/tour groups, active retirement communities, social clubs, church groups, recreational groups, nonprofits, corporate organizations, etc.

For Further Information and Booking Options Go To:
www.RenfrewMuseum.org/tours



2023 Volunteer Appreciation & Info Session

Saturday, March 11, 2023

11:00AM – 11:30AM Volunteer Recognition

11:30AM to 12:30PM – Lunch

12:30PM to 2:00PM – 2023 Info Session

Renfrew is seeking volunteers! As we approach our 48th Opening Day, we're looking for friendly, community-minded people to help us provide great experiences to our visitors during the upcoming season. Volunteers at Renfrew Museum and Park assist professional staff with a wide variety of tasks including our popular programs and events, gardening and grounds keeping, tours, interpretation, artifact collections and exhibits, guest engagement, outreach, and so much more! If you're interested in learning how you can help us advance Renfrew's mission this season, please plan to attend our mandatory informational meeting from 12:30pm to 2:00pm.

The day's program will begin at 11:00am with recognition of our 2022 volunteers followed by a lunch of soup and salad at 11:30am. New volunteers may opt to attend the whole day to get to know current volunteers a little better, or just join us for the information session from 12:30pm to 2:00pm.



Renfrew's 2023 Volunteer Info Session will be held from 12:30pm to 2:00pm in the Wagon Shed Room located at the Visitors Center with **simultaneous livestream online via Zoom**. A recording will be distributed to all registrants so, even if you can't join us live, you'll still be well-informed. This 90-minute session will be led by Renfrew's administrative staff. Join our dedicated team of volunteers and help Renfrew fulfill its vision "to be a welcoming and memorable destination where everyone can walk back in time."

FOUR WAYS TO ATTEND:

- ♦ **In-Person at Renfrew, All Day** (11:00am-2:00pm; *includes volunteer recognition, lunch, and info session*)
- ♦ **In-Person at Renfrew, Info Session Only** (12:30pm-2:00pm)
- ♦ **Live Online via Zoom, Info Session Only** (12:30pm-2:00pm; *Link will be emailed.*)
- ♦ **View recording within one week of program** (*Anytime; Must be pre-registered to receive recording*)

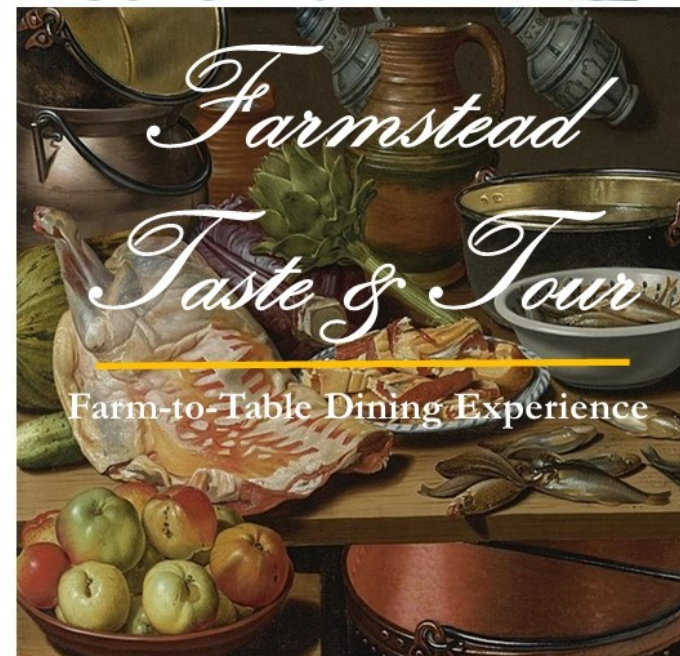
Pre-Registration Is Required by Monday, March 6 (no walk-ins).

Register online or call (717) 762-4723.

All current and prospective volunteers interested in serving during the 2023 season must register and attend the Volunteer Info Session via one of the four options (no exceptions).

www.RenfrewMuseum.org/volunteerinfosession
or register by phone at (717)-762-4723

Renfrew MUSEUM & PARK



Farm-to-Table Dining Experience

Offering guests the opportunity to sample seasonal, locally sourced fare inspired by the traditions of our historic Pennsylvania German farmstead.

Springtime (March)

Breads

Cornbread, Sourdough, Pumpernickel

Preserves

Honey Butter, Strawberry Jelly, Blackberry Jam

Soup

Creamed Asparagus

Salad

Spring Mix, candied pears, toasted pecan, cheddar, dressed w/ vinaigrette dressing

Entrée (Choose One)

Chicken Dijon w/whipped potatoes and glazed carrots
Or

Stuffed Portobello Dijon w/whipped potatoes and glazed carrots

Dessert

Lemon and Blueberry Trifle

Beverages

Choice of Unsweetened Ice Tea or Water
(Unlimited Refills)

Ginger Beer

(One Sample Serving Only During Entrée)

For more info about other seasonal menus
see program webpage

Three-Hour Program Package from 11:00am to 2:00pm

Select 2023 Dates Only:

Tuesday, March 14 Friday, March 17

Tuesday, August 15 Friday, August 18

Tuesday, Dec. 12 Friday, Dec. 15

Treat yourself or someone special to a delicious farm-to-table dining experience at Renfrew Museum and Park this season. Our Farmstead Taste & Tour program offers guests the opportunity to sample seasonal, locally sourced fare inspired by the traditions of our historic Pennsylvania German farmstead. Your meal will be hosted in Renfrew's Wagon Shed Room inside our converted Victorian barn. Servers dressed in authentic early 19th century clothing will wait upon you with old-fashioned hospitality.

Start with a hearty coursed meal of soup, salad, and a selection of fresh-baked breads with preserves followed by a delicious entrée. After lunch, enjoy a tour of the farmstead outbuildings and 1812 stone Museum House, then return for a scrumptious dessert.

Our menu changes seasonally and reflects the rhythms of life on the farm. For listing of menus go to:
www.RenfrewMuseum.org/tasteandtour



All dishes are freshly prepared by Chef Delaney Blubaugh of Delaney's Delicacies, Waynesboro, PA especially for guests of Renfrew Museum and Park.

Limit 20 people per session

(*Note: Minimum of 10 total registered guests required for Renfrew to host program, refunds issued if minimum is not met by registration cut off.)

Sold by the table. Seating available as:

Six (6) tables of up to 2 guests each – \$100 per table

Two (2) tables of up to 4 guests each – \$200 per table

Must register no less than 7 day in advance of event date. No refunds will be given after registration window closes, unless minimum registration is not met. Tables will be distanced 6'-0" apart and must be reserved by family unit, household, or party. Please select your table choice and indicate total number in your party at checkout. Table need not be filled to capacity to participate, but table price still applies. Thanks for your cooperation and we look forward to serving you at Renfrew Museum and Park!

To Reserve Your Table Go To:

www.RenfrewMuseum.org/tasteandtour