

Renfrew MUSEUM & PARK

“Walk Back In Time”

Spring 2022



der Wetterbahn

The Weathervane: News & Updates from the Farm

Our mission is to preserve, enhance, promote, and interpret the Royer family Pennsylvania German Farmstead, the Nicodemus and Bell collections, and the surrounding Park.

Preservation in Progress: Building a New Season at Renfrew!

In this issue:

- ♦ A Message from Our Executive Director
- ♦ Americana Corner Grant
- ♦ Nose to the Grindstone: Mill Project Update
- ♦ Welcome New Staff and Board Member
- ♦ Upcoming Programs and Events
 - 47th Annual Opening Day
 - Summer Concert Series
 - Yoga Flow @ Renfrew — and more!
- ♦ Clear the Coops Challenge

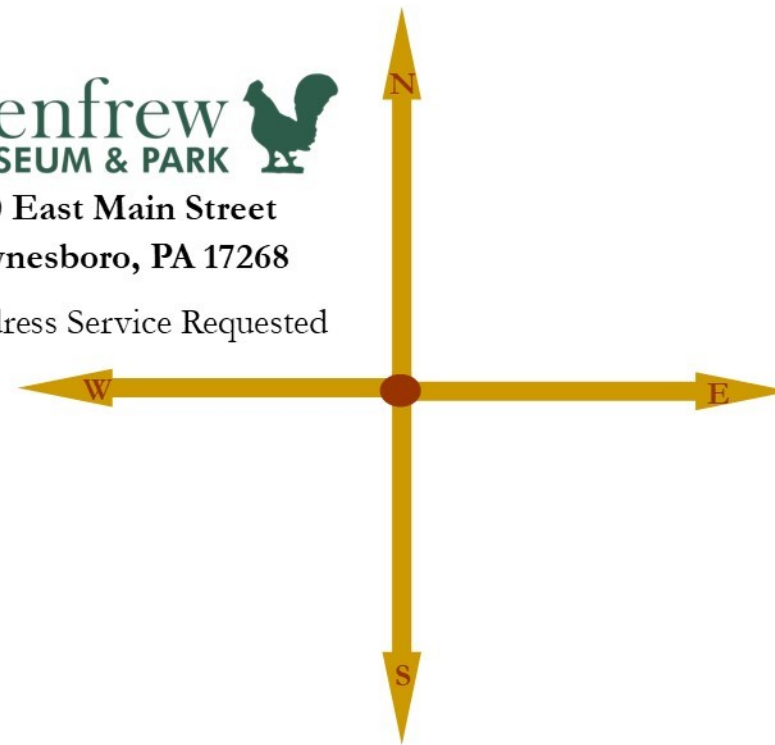
Visit us at www.RenfrewMuseum.org

Renfrew
MUSEUM & PARK



1010 East Main Street
Waynesboro, PA 17268

Address Service Requested



Non-Profit Org.
U.S. Postage
PAID
Waynesboro, PA
17268
Permit No. 405

Renfrew Administrative Staff Contacts

Becky LaBarre
Executive Director & CEO
becky.labarre@renfrewmuseum.org

Steve LaBarre
Manager of Visitor Experiences
steve@renfrewmuseum.org

Gene Kelley
Manager of Buildings & Grounds
gene@renfrewmuseum.org

 (717) 762-4723
info@renfrewmuseum.org
www.RenfrewMuseum.org

HOURS OF OPERATION
Summer (Mid-April—Mid-October)
Tues.-Fri. 9am—4pm; Sat. 1pm—4pm
Winter (Mid-October—Mid-April)
Mon.-Fri. 9am—4pm
Park Grounds Open Daily, Dawn to Dusk

Our Mission

To preserve, enhance, promote, and interpret the Royer family Pennsylvania German farmstead, the Nicodemus and Bell collections, and the surrounding Park.

Our Vision

To be a welcoming and memorable destination where everyone can walk back in time.

Our Values

Integrity — With honesty and truth, we will adhere to the highest moral and ethical standards in all our endeavors.

Authenticity — We will interpret with historical accuracy all of our exhibits, collections, programs, and events.

Excellence — We will be exceptional in everything we do.

Follow Us on Facebook and Instagram!



Renfrew Museum and Park



@renfrewmuseumpark



RENFREW COMMITTEE, INC.

Board of Directors

- Dade Royer, President
- Laurie Hovermale, Vice President
- Patti McLaughlin, Treasurer
- Harold Mumma, Secretary
- Valorie Dick
- Kari Saavedra
- Bruce McLaughlin

Staff

- Becky LaBarre
- Executive Director & CEO
- Steve LaBarre
- Manager of Visitor Experiences
- Suzanne Toms
- & Kirsten Lamb
- Visitor Experiences
- Representatives
- Gene Kelley
- Manager of Buildings and Grounds
- Guy Manson
- Buildings and Grounds Representative

A Message from our Executive Director:



Spring has sprung here at Renfrew!

Everywhere you look, new growth is poking through the soil, buds and blossoms are forming on the trees, and birds are beginning to build their nests. All is fresh and green and new at the farmstead.

In this spirit of rebirth and renewal, we are pleased to present the Spring 2022 issue of *der Wetterhahn* titled "Preservation in Progress: Building a New Season at Renfrew!" As we eagerly anticipate the start of our 47th tour season, we can't wait to welcome you to Renfrew's annual Opening Day Celebration on Saturday, April 9th (see page 5). This official kick-off event is our gift back to the community who so faithfully supports our mission all year through. We'll be offering a full day of free family-friendly programming including horse-drawn wagon rides, historic craft and trade demonstrations, special mill archeology presentation, longrifle case dedication, and more. Take in the sights and sounds of the farmstead at spring-time, the beauty of nature, and the company of friends both old and new on April 9th.

Speaking of new friends, we'd love to introduce you to recent additions on Renfrew's board and staff (page 4) along with our partners at Americana Corner (opposite) who have come alongside Renfrew with a generous grant to refresh the Foursquare Garden.

As we gear up for the new season's many activities, including the celebration of Arbor Day on April 29th (page 8) along with the return of Summer Concerts (page 6), Terrific Tuesdays (page 7), Yoga Flow (page 8), Historic Hearth Cooking Lessons (page 9), and more, we also prepare to begin several building and preservation initiatives. Most notably, we are in the early stages of construction of the Renfrew Mill! A project more than four years in the making, preparatory site work and archeological testing is slated to begin in April. You can read more about this exciting multi-phase project on page 3.

As always, the warmer weather jump starts our preservation work here at Renfrew. There are artifacts to care for, historic buildings to paint, roofs to restore, and never-ending landscape and garden beautification on our 107-acre property. If you'd like to help support Renfrew in these efforts, please consider a donation to our Clear the Coops Campaign (page 10). Spring is a great time to visit, so we look forward to seeing you at Renfrew soon!

Sincerely,

Rebecca J. LaBarre



BIG NEWS! Renfrew Museum and Park has been awarded a **\$7,000 grant by Americana Corner** for the refurbishment, preservation, and interpretation of its Pennsylvania-German four-square garden located at Fahnestock Farm.

Americana Corner was established in 2020 by Tom Hand. A West Point graduate, Class of 1982, Tom created Gilman Cheese Corporation after leaving the military. Upon selling his company, he retired and moved to Georgia. Tom spends most of his time writing for Americana Corner and helping charities with a focus on early America along with serving on the Board of Trustees for the American Battlefield Trust and the National Park Foundation's National Council. Americana Corner's purpose is to, "Rediscover America's incredible founding and first century of expansion, and remember why we all should be grateful for the blessings of this wonderful country." Accordingly, through the website blog, readers will "find informative stories of the great events, founding documents, and inspirational leaders who helped create and shape our country. From the American Revolution to the settlement of the American West, from the Declaration of Independence to the Emancipation Proclamation, and from George Washington to Abraham Lincoln, rekindle your love for American history in all its splendor." During the celebration of George Washington's birthday this year, Americana Corner was pleased to announce the inaugural recipients of the Americana Corner Grant Program. \$446,000 in grant funding, nearly double their initial commitment of \$250,000, went to 67 recipients across 24 states — including Renfrew! You can visit americanacorner.com for the full list of recipients.

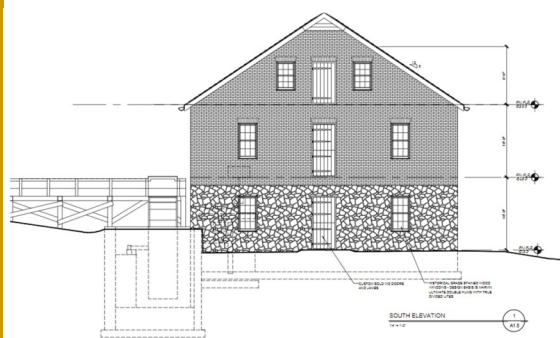


Renfrew's Four-square Garden

The Pennsylvania German four-square garden at Fahnestock Farm, an anchor of interpretation at the historic farmstead, is a representational feature on the landscape. First constructed nearly two decades ago, the focus was less on authenticity and period-appropriateness in materials, production and interpretation methods, rather the garden served as a mixed assembly of historic plantings and more modern approaches. From a structural perspective, the main vegetable and perimeter medicinal/flower/herb beds were initially built of modern dimensional pine lumber with hardware store fasteners. Over the years, these materials have severely degraded to the point that significant wood rot and loss of structural components have resulted in bulging, sinking, and unevenness with safety risks to staff, volunteers, and visitors alike occurring when pieces break off. Informational panels relating to garden use and plant types are worn, and recent scholarship necessitates updates to interpretive content.

Within the last two years, a **renewed commitment to interpreting the early American agricultural and ethnic heritage at Renfrew** has resulted in a robust approach to historical foodways programming with the gardens at the center. The grant provided from Americana Corner will further assist Renfrew Museum and Park in fulfilling its goal and mission to help visitors understand the rhythms of life on the farm, learning where their food comes from and how our ancestors grew, processed, and gained nourishment from the bounty of the land. The produce grown at Renfrew is used in our interpretation along with public programs like Farmstead Day, Farmstead Taste & Tours, Historic Hearth Cooking Lessons, and sold at local farmers markets as available to help support and sustain Renfrew's gardens and foodways programming. **By refurbishing, preserving, and bringing forth a renewed interpretation to the four-square garden we can continue to invite visitors to peruse the gardens and check out what's new during their visit to Renfrew Museum and Park.** We are so grateful for the generous support of Americana Corner! Stay tuned for updates on this very special project as the year progresses.

Nose to the Grindstone: Mill Project Update



Renfrew's Mill Committee and its professional design team have been hard at work over the past year, finalizing drawings and gaining approvals for the proposed construction of a full-scale, working mill. Special thanks to all those who have served during this critical period of decision-making and plan submission. We would especially like to recognize our generous donor, Jim Luty, and the founding members of the Mill Committee: Dade Royer, Chair; Doug Parks, Don Smith (architectural consultant), and Will Sheppard (archeological consultant), Brendan Bishop and the team of Triad Engineering, along with newer committee members Becky and Steve LaBarre (staff), Harold Mumma and Kari Saavedra (RCI board members), and Mark McLaughlin who all have guided the project along to this point. Renfrew greatly appreciates the support of our community as well!

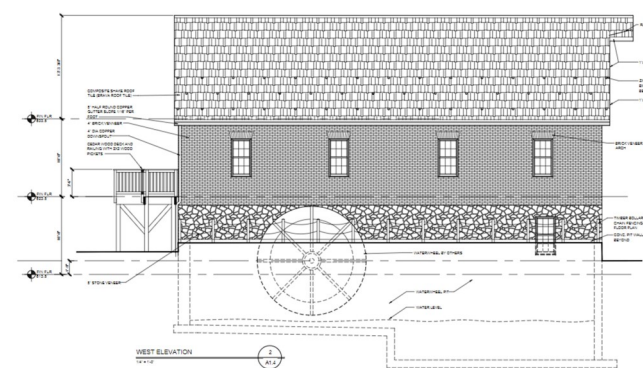
We are now very happy to announce that the project has cleared municipal permitting and is entering the early construction phase! Our project manager, Don Smith of Archinet, LLC (formerly of Bushey Feight Morin Architects) is currently assembling requests for proposal and we anticipate going out to bid for a general contractor very soon. Ahead of final selection of the construction team, preparatory work this spring will include trenching for utilities by the Borough of Waynesboro, along with shovel tests and archeological monitoring by Will Sheppard at the site of the new mill foundation and utilities trench.

Visitors to Renfrew's grounds should be prepared for active construction this season, which may result in closure and/or detours of some trails. Signage will be placed around the park and project information will be shared as it is made available on our website at www.RenfrewMuseum.org/Mill. We ask you to please pardon our mess and be patient with us as Renfrew embarks on this very exciting addition to the farmstead. We can't wait to share it with you!

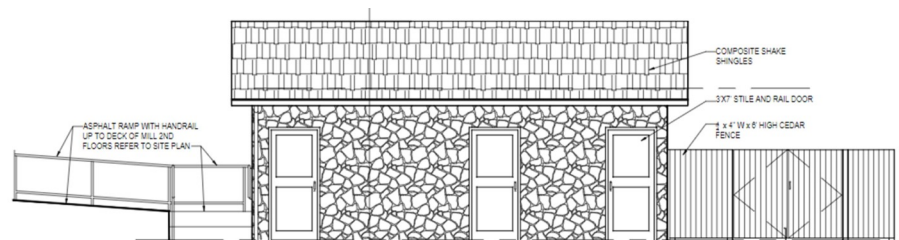
The new mill building, to be located north of the ruins of the original Royer Gristmill, will be a three-story representative structure will fully-functioning millworks driven by a single Fitz style overshot waterwheel. The main structure and small ancillary building housing restrooms and a recirculating pump will be constructed first (Phase I). The interior millworks (Phase II) will be built on site by master millwright Gus Kiorpes. To date, Renfrew has already sourced a wonderful pair of historic grindstones! Stay tuned for further updates as the project progresses.



East elevation with view of entrance adjacent to walking trail. Mill building is to be three stories with additional door on the south elevation at grade and a third entrance via ramp to the second floor at the north.



West elevation featuring custom-made reproduction overshot Fitz Waterwheel, an all-metal mechanism introduced around 1840.



East elevation of the Pump House containing two single-person restrooms and recirculating pump for the mill's waterwheel. Mechanical yard is fenced at right.

For an introduction to the Mill Project, please refer to "Milling it Over: Reconstructed Mill Proposed" on page 6 of the Spring 2021 issue of *der Wetterhahn*.

Welcome New Staff and Board Member



Kirsten Lamb, Visitor Experiences Representative

Kirsten Lamb is excited to begin her role as Visitor Experience Representative II at Renfrew Museum and Park. Since her early childhood, Kirsten was instilled with an appreciation for history and material culture. This has culminated in almost 20 years as a living historian, volunteering at such distinguished battlefields and historic sites including Gettysburg National Military Park, Antietam National Battlefield, Harpers Ferry National Historical Park, Cedar Creek and Belle Grove National Historical Park, Eisenhower National Historic Site, Horseshoe Curve National Historic Landmark, Skye Meadows State Park, The Bedford Springs Resort Hotel, and Renfrew itself. Kirsten has developed and honed accurate, quality impressions including civilian life and the United States Sanitary Commission during the Civil War and the American Homefront, American Red Cross, French civilian life and the French resistance during WWII. Her passion for history blended with her passion for art and design and upon graduating Valedictorian from Fairfield Area High School, she pursued a career in historical fashion. After completing a dressmaker's apprenticeship, she worked for several historical clothing businesses. She eventually launched her own freelance business specializing in fashion history, research and appraisals, garment design, personal styling and personal shopping. Kirsten enjoys spending quality time with people and finds attentiveness, attention to detail and a personal touch important. Her years of living history, work experience and the close relationships she has built with others will serve her well as she becomes part of the Renfrew family. She believes it is essential to share our common story – to make history accessible, real and relatable. Her overall goal is to be part of and nurture a meaningful environment of learning, fun and creativity with her co-workers, community, fellow enthusiasts and the public at large – to share our love for Renfrew and the region with both the locals and tourists who make it their destination. Say hello to Kirsten on your next visit to Renfrew!



Bruce McLaughlin, Board Member

Bruce McLaughlin is the Quality Assurance Manager at Specialty Granules (SGI) in Hagerstown, MD. He lives with his wife, Ashley, and their chocolate lab, Dixie, in Fayetteville, PA. The couple has been married for about two and a half years and are expecting their first child in July. Bruce was born and raised in Waynesboro, PA where he had opportunities to take field trips to Renfrew and learn about the history and natural surroundings of the site. He attended high school at Mercersburg Academy and continued on to college at the Colorado School of Mines to obtain his undergraduate degree in Metallurgical and Materials Engineering. Bruce spent much of his time in high school and college learning about outdoor recreation and had the privilege of guiding backpacking, skiing, and climbing trips while in college. He started his career with SGI at their facility in Ione, CA, where he spent nearly two years in quality control before moving back to Waynesboro, PA to work in process engineering. After another few years, Bruce transferred to quality systems and just recently took on his latest role. He enjoys getting outside to hike, golf, hunt, fish, and boat. Bruce looks forward to the opportunity to serve on the RCI Board and give back to the community in which he has spent many years growing and learning. Welcome aboard, Bruce!



Programs & Events

47th Opening Day Celebration

Saturday, April 9, 2022

10:00am to 4:00pm

Free Admission



You're invited to join us on Saturday, April 9th for this free event to kick off our 47th season and enjoy springtime at Renfrew and we look forward to welcoming you to Renfrew Museum and Park throughout our 2022 season!

Activities include:

Royer Farmstead

10:00am - 4:00pm

- ♦ Museum House tours (first floor)
- ♦ Historic crafts and trade demonstrations
- ♦ Horse-drawn wagon rides
- ♦ Family fun area
- ♦ Historic Hearth Cooking
- ♦ Peruse the Renfrew Gift Shop and Visitor Center galleries
- ♦ and more!

Visitor Center Gallery - 1:00pm

Longrifle Display Case Dedication
Join us as we dedicate one of two display cases donated to Renfrew by Frank Davis in loving memory of his wife Kerri Lawler-Davis

Renfrew
MUSEUM & PARK



Visitor Center

Wagon Shed Room - 11:00am

ROYER GRISTMILL

Archeologist Will Sheppard presents an archeological and cultural history of the Royer Gristmill (1807-1879) and Renfrew Museum and Parks vision for reconstruction of a gristmill near its original site integrating the industrial and agricultural heritage of this one-of-a-kind property into the authentic stories Renfrew already shares.

Purchase Food & Drink

10:00am - 4:00pm

Chicago Charley's



For more information see RenfrewMuseum.org/OpeningDay



2022 Judy Elden Memorial Summer Concert Series

Thursday evenings June through July

Sit back and enjoy live music in a beautiful setting on the lawn behind the Museum House on Thursday evenings. All concerts begin at 6:30 p.m. and are free to the public. Bring a chair or blanket to sit on and kindly remember that Renfrew is a non-smoking facility and alcohol is prohibited on the property.



Lucky Punk
June 2



Drew Adams
June 9



Rebekah Foster
June 16



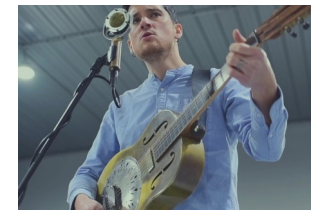
Flying Matlocks
June 23



Frank 'n' Bob
June 30



East of Antietam
July 7



Nick Andrew Staver
July 14



Buck Fisher and Friends
July 21



Evan Crider
July 28



Welcome Tent Concessions

Stop by the Welcome Tent, located west of the Royer Milk House, during concert evenings for info on upcoming programs and to peruse our selection of museum shop merchandise. Items include Renfrew apparel, children's toys, pet items, and more. Assorted pre-packaged light snacks and bottled water are available for \$1.00 each. We are able to accept payment by cash or credit card. Every purchase supports the mission of Renfrew Museum and Park. Thanks for your support!

Learn more online at: RenfrewMuseum.org/SummerConcerts

Mark Your Calendar!

(More info and registrations to follow in future issues.)

- ♦ **#RenfrewOnTheRoad: Gettysburg Civil War Relic and Collector Show**
Saturday, June 25 & Sunday, June 26, 2022

- ♦ **7th Annual Oktoberfest Fundraiser**
Saturday, September 17, 2022 from 12:00-5:00pm

- ♦ **#RenfrewOnTheRoad: 41st Annual Pippinfest**
Sunday, September 25, 2022 from 9:00am-4:00pm

- ♦ **#RenfrewOnTheRoad: Mainstreet Waynesboro Market Day**
Saturday, October 1, 2022 from 9:00am-4:00pm

- ♦ **"Treasures from the Collection" Members Only Event**
Thursday, October 6, 2022
Reception 6:30pm,
Program 7:00pm

- ♦ **Film Showing "A Christmas Carol"**
Waynesboro Theater
Saturday, November 26, 2022 Time: TBD

- ♦ **Christmas on the Farm**
Friday, December 2, 2022 from 3:00-8:00pm and
Saturday, December 3, 2022 from 12:00-8:00pm



TERRIFIC TUESDAYS: *Historic Activities for Families*

Hands-on Farmstead Adventures!

Learn about life on our historic Pennsylvania German Farmstead by visiting four of Renfrew's historic features: Pennsylvania Foursquare Garden, Milk House, Summer Kitchen, and Fahnestock Farm. Students will make fun craft projects inspired by the authentic stories found in our collections, buildings, and landscape.

**Tuesday Mornings from
10:00am-12:00pm**

**Four (4) select dates starting in
March 2022**

**\$10 per child / \$8 for Friends of
Renfrew Members**

3/29 Gardening—Pennsylvania German Foursquare Gardens
6/28 Dairying—Milk House
8/23 Architecture—Fahnestock House, Barn, & Lime Kiln
9/27 Cooking & Baking—Summer Kitchen

*Limit 20 students per session.
Recommended for kids ages 6-13.
Must be accompanied by a
responsible adult (admitted at no
charge).*

Register Today!

**[www.renfrewmuseum.org/
TerrificTuesdays](http://www.renfrewmuseum.org/TerrificTuesdays)**



#RenfrewOnTheRoad: 49th Annual Civil War Collectors Show **Saturday, June 25 9am-5pm & Sunday, June 26 9am-3pm** **Allstar Events Complex, Gettysburg, PA**

Join Renfrew's staff at the Allstar Events Complex, Gettysburg, PA for the 49th Annual Civil War Collectors Show! Look for our booth among this annual gathering of 300+ dealers of pre-1900's antique militaria, arms, and historical artifacts. Renfrew will be showcasing a display of historical artifacts

from the museum collection as well as providing information about the history of our 200+ year old Pennsylvania German farmstead, upcoming programs, and we might even have a few live social media postings throughout the weekend. Stop by, snap a pic, and say hello!

**Visit <https://www.gbpa.org/event/annual-civil-war-relic-show>
to learn more about the show.**

Yoga Flow @ Renfrew

Join instructor Wendy Royer for FREE yoga sessions in the Museum House backyard at Renfrew on select Thursday mornings* at 9:00 am from June through August, 2022.

Class focuses on relaxation, flexibility, and strength through basic yoga poses connecting movement and breath. Accessible to all ages and fitness levels.

No reservation required. Please bring your own yoga mat.

**Weather dependent. Rain location is the Wagon Shed room in the Visitors Center if not already reserved.
Children are welcome to attend in the company of and under supervision of a responsible adult.*



Mark Your Calendar

**June 6, 9, 16, 23 & 30th July 7, 14, 21, & 28th
August 4, 11, 18, & 25th**

www.renfrewmuseum.org/YogaFlow

Arbor Day Tree Planting Friday, April 29, 2022 at 2:00pm

Founded in 1872 by J. Sterling Morton in Nebraska City, Nebraska, National Arbor Day is observed annually on the last Friday in April. On the very first Arbor Day, April 10, 1872, an estimated one million trees were planted!

Each year, thousands around the country celebrate together by planting trees in their communities. Join the Borough of Waynesboro Council, Shade Tree Commission, and Renfrew Committee, Inc. at Renfrew Museum and Park on Friday, April 29, 2022 at 2:00pm for a ceremonial planting and dedication.

Complementary evergreen saplings available from Bartlett Tree Service (while supplies last).

For more information, please call (717) 762-4723 or email info@renfrewmuseum.org.



Historic Hearth Cooking Lessons

Personalized instruction for groups of up to four guests.

Renfrew
MUSEUM & PARK



Now booking for the 2022 season!

www.RenfrewMuseum.org/historic-hearth-cooking

HISTORIC HEARTH COOKING LESSONS

\$300.00 for a 3-hour session

Select Dates Only, 10:00am to 1:00pm

One to Four Participants

Pre-registration is required.

Private Lessons for up to Four Guests

Enjoy an intimate, hands-on culinary experience inside Renfrew's 1814 Summer Kitchen. Guests will be taught the basics of early nineteenth-century open hearth cooking techniques by preparing their own period meal under the guidance of our domestic life historians in period dress.

Menu selections reflect the seasonal ingredients available to local families like the Royers during the early nineteenth century and can be tailored to participants' dietary needs. You will learn about historic hearth equipment, how it works, and use it safely to create a delicious and hearty repast. Nothing tastes better than a hearth-cooked meal made by your own two hands! Select from one of the dates listed below for your personalized instruction in historic cookery today.



Select Your Date!

Monday, May 2

Saturday, May 14 (sold out)

Saturday, June 11

Monday, June 13 (sold out)

Thursday, September 1

Wednesday, September 21

Monday, October 3

Saturday, October 8

Renfrew MUSEUM & PARK



Clear the Coops Challenge

Join Renfrew in an effort to raise a total of \$5,050 toward operations!

www.RenfrewMuseum.org/clear-the-coops

After being cooped up all winter, we can't wait for spring here at Renfrew Museum and Park! Help us get our historic Pennsylvania German farmstead ready by continuing our **Clear The Coops Challenge**. Last year we raised \$2,336, but there are many roosters still remaining cooped up—\$2,714 worth to be exact.



Visit our website and select a donation value by clicking on a numbered image, then make your tax-deductible gift to release the roosters!

The numbers may look small with gift choices ranging from \$1 to \$100, but that's no chicken scratch. **When the whole board is cleared, Renfrew will have raised a total of \$5,050.** That's plenty to crow about!

Giving will help support our springtime operational needs including grounds-keeping, heirloom gardens, historic foodways programming, Terrific Tuesdays family activities, and more. **Opening Day is Saturday, April 9, 2022.** Let's work together to **Clear The Coops** at Renfrew this spring!

