

Renfrew MUSEUM & PARK

“Walk Back In Time”

Fall 2021



der Wetterhahn

The Weathervane: News & Updates from the Farm

Our mission is to preserve, enhance, promote, and interpret the Royer family Pennsylvania German Farmstead, the Nicodemus and Bell collections, and the surrounding Park.

History and the Harvest: Bringing Everyone to the Table

In this issue:

- ♦ A Message from Our Executive Director
- ♦ Preserving the Bounty of the Harvest at Renfrew
- ♦ Upcoming Programs and Events
 - Oktoberfest
 - Christmas on the Farm
 - The Legend of Sleepy Hollow
 - Mid-Century Christmas
 - Holiday Farmstead Taste & Tours — and more!

Visit us at www.RenfrewMuseum.org

Renfrew
MUSEUM & PARK

1010 East Main Street
Waynesboro, PA 17268

Address Service Requested



Non-Profit Org.
U.S. Postage
PAID
Waynesboro, PA
17268
Permit No. 405

Renfrew Staff Contacts

Becky LaBarre
Executive Director & CEO
becky.labarre@renfrewmuseum.org

Steve LaBarre
Manager of Visitor Experiences
steve@renfrewmuseum.org

Suzanne Toms
Visitor Experiences Representative
suzanne@renfrewmuseum.org

John Frantz
Supervisor of Buildings & Grounds

 (717) 762-4723
info@renfrewmuseum.org
www.RenfrewMuseum.org

Our Mission

To preserve, enhance, promote, and interpret the Royer family Pennsylvania German farmstead, the Nicodemus and Bell collections, and the surrounding Park.

Our Vision

To be a welcoming and memorable destination where everyone can walk back in time.

Our Values

Integrity — With honesty and truth, we will adhere to the highest moral and ethical standards in all our endeavors.

Authenticity — We will interpret with historical accuracy all of our exhibits, collections, programs, and events.

Excellence — We will be exceptional in everything we do.

Follow Us on Facebook and Instagram!



Renfrew Museum and Park



@renfrewmuseumpark



RENFREW COMMITTEE, INC.

Board of Directors

Dade Royer, President
Doug Parks, Vice President
Doug Burkholder, Treasurer
Harold Mumma, Secretary

Valorie Dick

Laurie Hovermale

Patti McLaughlin

Staff

Becky LaBarre

Executive Director & CEO

Steve LaBarre

Manager of Visitor Experiences

Suzanne Toms

Visitor Experiences

Representative

John Frantz

Supervisor of Building and

Grounds

Gene Kelley

Guy Manson

Maintenance

A Message from our Executive Director:



Fall is a great time of year at Renfrew! The farmstead is beautiful in all seasons, but takes on an especially warm glow during autumn. There's so much to love about fall: the changing leaves, a crispness in the air, and best of all—the food! In case you haven't noticed, we love food here at Renfrew, and fall's the season to indulge in the coziness of a hearty meal and the comfort of companionship. There's nothing like bringing everyone to the table!

We find common ground around the harvest table as we come together to share food and engage in meaningful conversation. Renfrew's like that — a community gathering place where everyone always gets a seat and a big ol' helping of something they love.

In this issue, we'll explore the theme "History and the Harvest: Bringing Everyone to the Table" with highlights from our upcoming 2021 holiday season. Learn about how our former residents "Preserved the Bounty of the Harvest at Renfrew" (page 2) with historic insights into how food was put up over the centuries. Check out what's in store for Renfrew's *Sixth Annual Oktoberfest* on Saturday, September 18 (pages 3 & 4) and show your support for everyone's favorite farmstead by joining us at this important family-friendly fundraiser.

We'll take #RenfrewOnTheRoad this fall to Pippinfest in Fairfield on September 26, Mainstreet Waynesboro's Market Day on October 2, (page 8) and to the movies at Waynesboro Theatre with a spooktacular showing of *The Legend of Sleepy Hollow* on October 15 (page 7). We'll also travel virtually to Garfield Farm Museum (page 8).

Be sure to mark your calendar for a host of holiday events at Renfrew, kicking off with a very special presentation *Midcentury Christmas* by Dr. Leslie Goddard on November 23 (page 9), then re-discover the simple joys of Christmas Past and make memories to last a lifetime at Renfrew's beloved *Christmas on the Farm* event on Friday, December 3 and Saturday, December 4 (pages 5 & 6). Finally, we invite you to gather at Renfrew with our holiday *Farmstead Taste & Tours: Farm-to-Table Dining Experience* (page 10), the perfect gift to cap off a memorable holiday season.

This fall, let's bring everyone to the table and enjoy the bounty of the harvest at Renfrew Museum and Park!

Sincerely,

Rebecca J. Barre



Autumn is a time when we consider the long and storied tradition of harvesting and preserving the bountiful produce acquired throughout the growing season. It's a culmination of the year, bringing together family and friends to the table to give thanks, sharing in good cheer and warm tidings. That tradition is woven into the very

fabric of Renfrew Museum and Park, a part of our history and heritage that connects past to present. Preserving the bounty of the harvest so it can be shared with others is a practice that has always taken place here.

In the eighteenth and early nineteenth centuries, families like the Scotch-Irish Renfrews and Pennsylvania German Stoners and Royers employed ancient preservation techniques including drying, fermenting, salting and smoking to put up food stores for the winter months. Technologies for long-term storage changed little over the colonial and early Federal periods, with the primary storage vessels made of lead-glazed earthenware, glass containers sealed with wax, wooden casks, barrels, etc. To slow the growth of bacteria, several options were available. Vinegar was a key ingredient, with vegetables and fruits submerged below the liquid level to prevent spoilage. Thoroughly drying produce, salt curing and smoking meats, packing certain cuts in lard, along with storing fresh fruits and vegetables in sawdust or oats, were just a few of the methods employed to help resist decay from exposure to moisture in the air.

By the middle period of the nineteenth century, new innovations in commercial preservation such as tin cans and bottled jars allowed for increasingly shelf-stable fare. It was discovered that, for the home pickler, stoneware crocks were a much safer option than redware which reacted adversely to the acidic properties of vinegar brines. As the century wore on, and more specifically after 1858, the invention of the glass bottle canning jar by John Landis Mason became a revelation for homemakers. The Mason jar, with its screw-on lid and rubber gasket, formed a hermetic seal when submerged into a hot water bath. This innovation was later improved upon by the Ball Corporation which made home canning easier and more accessible to the masses. Today, the Ball jar remains synonymous with America's past and the hard-working farm families who have used it to preserve the bounty of the harvest for generations. Well into the twentieth century, the Ball jar was employed by subsequent occupants of Renfrew including the Minnichs, Beavers, and finally, the Nicodemuses.

Besides the methods mentioned above, Renfrew's last private residents, Emma and Edgar Nicodemus, put their own spin on preserving the harvest in preparation for the holiday season. As their property's longtime caretaker, Ed Miller, reminisced:

"The holiday really began in May when the first strawberries ripened. That was the first ingredient to go into the two-gallon John Bell crock to ferment for the Rumtopf [German for rum pot] that was the lifeblood of the holiday season... Each new fruit was added as it ripened. June and July were cherries, sweet and sour. Luckily for me, Mrs. Brabme pitted them. Later came the peaches from the orchard and damson plums from Edgemont. I believe there were also red raspberries and grapes Mrs. Nicodemus bought and blackberries I picked from along nearby fences. But the most important ingredient that topped off each layer of fruit was the rum. Lots and lots of strong rum. This beady concoction was spooned very generously over ice cream for dessert at their holiday dinners."

"Another tradition was fruitcakes. Mrs. Nicodemus worked for weeks on them, a number of small ones and a larger one for their home. The first step was buying the crystallized fruit from Victor's Market in Baltimore. The orange citron, apricot and pineapple bits were molded tightly into the shape of the fruit [cake pan]. She would break them up and add them along with the candied cherries, raisins, dates, and nuts to the stiff, rum-laced batter. After they were baked, she wrapped them in cloth and stored them on a tray in the pantry. About once a week she would pour extra rum over the top and cover them again until they were eventually as heavy as bricks." (Breakfast with Ed, p 73,75-76)

Just as Emma and her predecessors shared the bounty of the harvest here at Renfrew, we invite you and your family to celebrate along with us this season as you share your own harvest traditions and prepare for the holidays!



"A FAMILY-FRIENDLY CELEBRATION OF HISTORY AND THE HARVEST!"

Saturday, September 18, 2021

12:00pm - 7:00pm

General Admission:

Adults \$10, Children 7-18 \$5.00, Under 6 Free
Biergarten (Age 21+) \$5.00 per drink (limit 4)

Come enjoy a fun-filled day at Renfrew's Sixth Annual Oktoberfest! This seasonal favorite is set amongst our beautiful historic farmstead to take full advantage of the scenic views and unique period setting. As always, this traditional event will have a distinctive Renfrew feel as we honor the German roots of the Royer family that worked this land. It's fun for everyone with a one-of-a-kind family-friendly celebration of history and the harvest. Your admission includes entry into the festival featuring live music, abbreviated tours of the 1812 Royer House, historic trade demonstrations, retail and food vendors, silent auction, children's farmstead activities, games, and so much more! Relax in our fenced, tented Biergarten and sample local craft beer. With so much to do, you're bound to have a great time! Show your support for Renfrew's German heritage as we celebrate Oktoberfest together.



Midway: Food & Retail Vendors

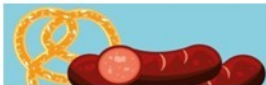
Open 12:00 - 7:00pm



**Joe's
Chili Stop**



A Matter of Taste
Cakes & Catering



**Moonlit Cottage
ARTWORKS**



Now & Then Boutique



Biergarten

Open 12:00 - 7:00pm



Ages 21+ \$5.00 per drink (limit 4)

Enjoy locally crafted "Oktoberfest" beer provided by Rough Edges Brewing and a selection of ale by Tim Mason.

Silent and Oral Auction Fundraisers

Silent 2:00pm (session 1), Live Oral 3:00pm, Silent 4:00pm (session 2)

Bid on a wide selection of donated items from food and wine, décor, art, shopping and dining experiences—and more! Bidding will take place in-person on the day of the event. Must be present to win. Payment by cash or credit card only, no personal checks. All proceeds to benefit Renfrew Museum & Park.



Live Traditional German Music

- Dockenspieler 12:00-3:00pm
- Blaskapelle die Shippensburg German Band 4:00-7:00pm



Historic Crafts & Trades Demonstrations

Open 12:00 - 5:00pm



Shenandoah Valley Pottery

Charlie Bell (descendent of the Bell pottery lineage) will demonstrate pottery techniques.



18th Century Beer Brewing

Join Richard Wagner, beer historian, as he demonstrates traditional 18th Century brewing.

Royer Museum House Tours & Family Fun Area

Open 12:00 - 5:00 p.m.



Royer Museum House

Take time to tour and explore the history of Renfrew and the Royer family led by costumed docents.



Oktoberfest and Fall Harvest Inspired Activities

Enjoy family-friendly fun with crafts, games, and more!



Pre-purchase tickets at: RenfrewMuseum.org/oktoberfest



Programs & Events



Rediscover the **simple joys** of Christmas past at Renfrew Museum and Park this holiday season! "Walk Back In Time" through over 200 years of celebration at our annual **Christmas on the Farm** event. Follow the soft glow of flickering lanterns and the fiery blaze of torches to the beautifully decorated Museum House where you'll encounter how **treasured holiday traditions** in America evolved over the centuries.

Explore some of our historic outbuildings where period-attired interpreters will share even more **holiday cheer**! Enjoy a cozy warming circle while you wait to take a horse-drawn wagon ride down Fahnestock Lane or enjoy a goodie or warm beverage from one of our vendors. Step out of the chill into the **festive atmosphere** inside our Visitors Center where even more family fun awaits. Peruse our gallery, then browse Renfrew's museum shop and **Christkindlmarkt** for that special gift. Your ticket also includes live music, crafts, and more!

We invite you to join us at Renfrew this December for an unforgettable holiday experience and **make memories** that will last a lifetime at Christmas on the Farm.



Christmas on the Farm



Friday, December 3

3:00pm to 8:00pm

Saturday, December 4

12:00pm to 8:00pm

\$10 Per Person, \$5 for Children, Age 3-12,

Free for Kids 2 & Under

Free for Renfrew Members

Pre-purchase tickets online at:
RenfrewMuseum.org/Christmas-on-the-Farm

Event Highlights

- ◆ Horse-drawn Wagon Rides Up and Down Fahnestock Lane by Lantern Light



- ◆ First Floor Tours of the Holiday Decorated 1812 Royer House
- ◆ Christkindlmarkt



- ◆ Blacksmithing
- ◆ Handmade Historic Gift Demonstrations
- ◆ Hearth Cooking & Baking in the Summer Kitchen

- ◆ Make & Take/Take & Make Holiday Crafts

- ◆ Visits from the Belsnickel

- ◆ Live Holiday Music

- ◆ Food Vendors



Mark Your Calendar!

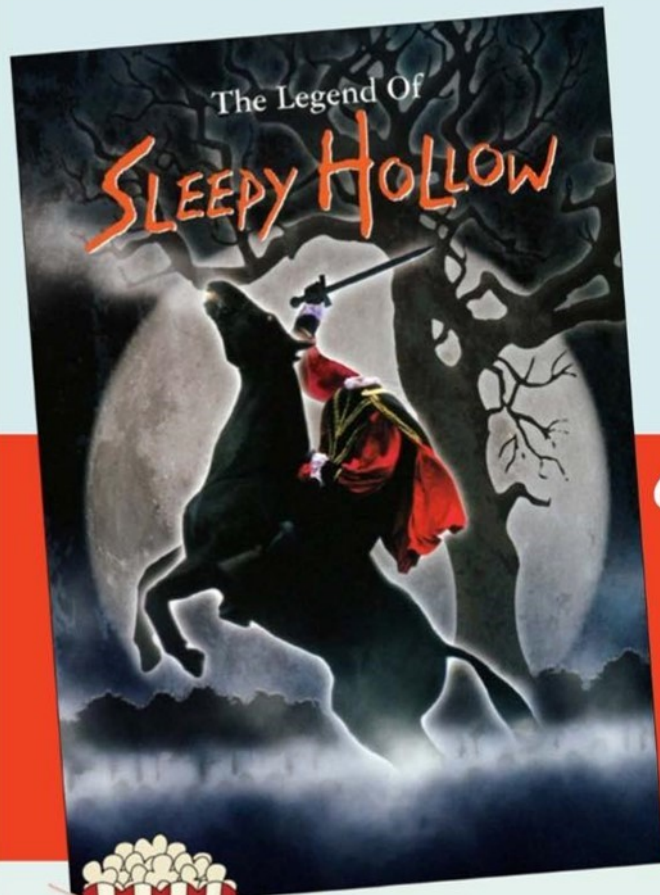
- ◆ **Final Day of Regularly Scheduled Tours for the Season**
Saturday, October 16, 2021 at 1, 2, & 3:00pm
- ◆ **Winter Hours**
Visitor Center Open Monday-Friday Beginning Monday, October 18, 2021 from 9:00am- 4:00pm
- ◆ **CANCELLED**
Longrifle & Early American Collectors Show
Saturday, November 6, 2021 from 9:00am- 3:00pm
- ◆ **#GivingTuesday**
Tuesday, November 30, 2021
- ◆ **Closed for Thanksgiving**
Thursday, November 25 & Friday, November 26, 2021
- ◆ **Closed for Christmas Eve & Day**
Friday, December 24 & Saturday, December 25, 2021
- ◆ **Closed Until the New Year**
Sunday, December 26, 2021 thru Sunday, January 2, 2022

WAYNESBORO

THEATRE

75 West Main Street • Waynesboro, Pa.

Presented in Partnership with Renfrew Museum and Park



The Legend of Sleepy Hollow
Friday, October 15
at Waynesboro Theatre

6 PM: Games, Activities
and a Craft in the Lobby
Halloween Costumes
Encouraged!
7 PM: Movie Time



Get tickets at
Eventbrite.com
or at the door,
while supplies last.

**THE HEADLESS HORSEMAN
RIDES AGAIN...**

- TICKETS ON SALE NOW •
All tickets \$8 –
Includes regular soda & popcorn!
Everyone taking a seat must have a ticket.

Renfrew
MUSEUM & PARK



Brought to you by Mainstreet Waynesboro and the Waynesboro Community Theatre Project, in partnership with Renfrew Museum & Park

#RenfrewOnTheRoad:

Pippinfest Fairfield, PA
September 26, 2021 9am - 4pm

Mainstreet Waynesboro Market Day
October 2, 2021 9am - 4pm

Look for our booth this fall among these wonderful yearly gatherings of local artisans and merchants along downtown Fairfield and Waynesboro, PA. Renfrew will offer handmade items along with other selections from the museum gift shop including pottery, folk art, jewelry, décor items, and more! Each purchase supports our mission of preservation and stewardship of this 107-acre community treasure.



We'll also have information about the history of our 200+ year old Pennsylvania German farmstead, upcoming programs, and more. Stop by, snap a pic, and say hello!

Learn more at: <https://www.pippinfest.com/>
and <https://www.mainstreetwaynesboro.org/market-day>



"Treasures From the Collection" Members Only Event

Thursday, October 7, 2021

Reception: 6:30 pm, Program: 7:00 - 8:30pm

SPECIAL OFFER! Friends of Renfrew Museum and Park Members who renew or join now through September 30, 2021 are eligible to attend this exclusive evening reception with Executive Director Becky LaBarre and Manager of Visitor Experiences Steve LaBarre. Enjoy light refreshments in the Visitors Center gallery then gather in the Wagon Shed Room as Becky and Steve share a special selection of artifacts from Renfrew's collection with you. Take turns viewing these treasures up close and personal then enjoy a presentation on the background of each object from the perspective of Renfrew's resident material culture historians. Don't wait - book now! Don't miss your chance for this unique opportunity to experience Renfrew's collections first-hand. Not a *Friends of Renfrew* member yet? Join now or renew your membership online.

Visit: RenfrewMuseum.org/treasures-from-the-collection



\$5 per person / Free for Friends of Renfrew

Members

TWO WAYS TO ATTEND:

1. Online Via Zoom
(Log-in credentials will be emailed.)
2. In-Person Watch Party at Renfrew
(Limit 30)

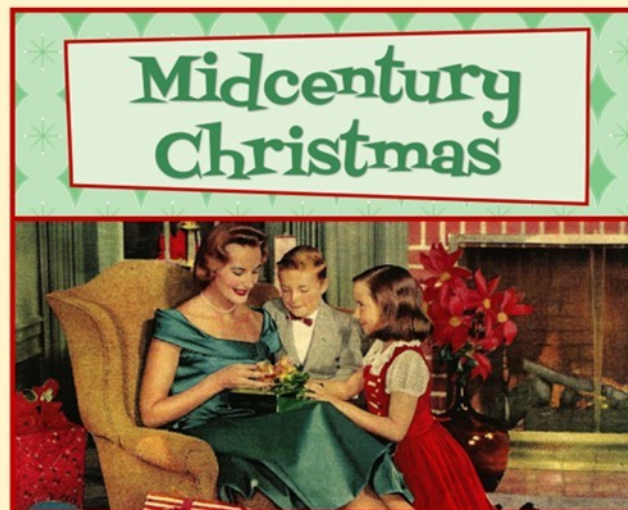
Registration will close at 12:00pm
on the day of event.

Register at: RenfrewMuseum.org/presentations-and-workshops



**Tuesday, October 19, 2021
at 7:00 pm**

"Go west, young man" and explore Garfield Farm and Tavern Museum in Campton Hills, IL with Renfrew this fall – virtually! Join Executive Director, Jerome "Jerry" Johnson, and Assistant Site Manager, Joseph Coleman, for a fascinating look at Garfield Farm Museum, a 366-acre farmstead with preserved wetlands, savanna and prairie land located 40 miles west of Chicago. Take this virtual journey with us to Illinois and discover how Garfield Farm Museum brings together the farming experiences of the past 150 years with an appreciation of the natural environment settlers found when they arrived. An unspoiled beauty that, thanks to the museum's preservation efforts for over four decades, folks can still enjoy to this day. Learn more at www.garfieldfarm.org.



Presented virtually by
Dr. Leslie Goddard, Ph.D.

Tuesday,
November 23, 2021
at 7:00pm

Kick off the holiday season with Renfrew as we remember back to the era of our last private residents, Edgar and Emma Nicodemus!

Christmas in America from the 1940s through the 1960s meant aluminum trees, department store Santas, and cartoon specials on TV. Every kid in the suburbs had to have an Easy-Bake Oven, a G.I. Joe, or a Slinky. The coolest houses had rotating color wheels for their trees.

Historian Leslie Goddard explores this optimistic era in a new illustrated lecture, using photographs, advertisements, greeting cards, and catalogs to explain why this era was such a turning point for how we celebrate the holidays.



\$5 per person / Free for Friends of Renfrew Members
TWO WAYS TO ATTEND:

1. Online Via Zoom (Log-in credentials will be emailed.)
 2. In-Person Watch Party at Renfrew (Limit 30).
- Registration will close at 12:00pm on the day of event.



Leslie Goddard, Ph.D., is an award-winning actress and scholar who has been portraying famous women and presenting history lectures for more than ten years.

She holds a Ph.D. from Northwestern University specializing in U.S. history and American Studies as well as master's degrees in both theater and museum studies. A former museum director, she is the author of two books on Chicago history and currently works full-time as a historical interpreter, author, and public speaker.



Register online at: [RenfrewMuseum.org/presentations-and-workshops](https://www.RenfrewMuseum.org/presentations-and-workshops)
or register by phone to (717)762-4723



Holiday Farmstead Taste & Tour

Farm-to-Table Dining Experience

Treat yourself or someone special to a delicious farm-to-table dining experience at Renfrew Museum and Park this holiday season. Our Farmstead Taste & Tour program offers guests the opportunity to sample seasonal, locally sourced fare inspired by the traditions of our historic Pennsylvania German farmstead. Your meal will be hosted in Renfrew's Wagon Shed Room inside our converted Victorian barn. Servers dressed in authentic early 19th century period clothing will wait upon you with old-fashioned hospitality.

Start with a hearty coursed meal of salad, soup, and a selection of fresh-baked breads accompanied by Dutch Valley preserves and creamy, churned butter followed by a trio of sandwiches. After lunch, enjoy a tour of the farmstead outbuildings and 1812 stone Museum House decorated for the holiday, then return for a scrumptious dessert.

Our menu changes seasonally and reflects the rhythms of life on the farm. Produce is sourced from Greensburg Farms, Hagerstown, MD and prepared by our friends at Keystone Family Restaurant, Waynesboro, PA.

Winter (December) Menu

Salad Apple Pear Soup Squash

Sandwiches

Chicken Salad, Pastrami & Swiss, Roasted Red Pepper

Breads

White, Rye, Cranberry Orange Scone

Preserves

Spiced Plum Jelly, Apple Butter, Freshly Churned Butter

Dessert

Ginger Snap, Pumpkin Tart

Beverages

Ice Tea, Water, Ginger Beer



Three-Hour Program Package
from 11:00am to 2:00pm

Select December 2021 Dates Only:

Tuesday, December 7 Friday, December 10

Tuesday, December 14 Friday, December 17

Sold by the table.

Limit 18 people per session.

Seating available as:

(2) tables of up to 2 guests – \$50 each

(2) tables of up to 4 guests – \$100 each

(1) table of up to 6 guests – \$150

Must register no less than 48 hours in advance. No refunds will be given after registration window closes. Due to COVID-19 restrictions, tables will be distanced 6'-0" apart and must be reserved by family unit, household, or party. Please select your table choice and indicate total number in your party at checkout. Table need not be filled to capacity to participate, but table price still applies. Thanks for your cooperation and we look forward to serving you at Renfrew Museum and Park!

Reserve Your Table Now:

**[www.RenfrewMuseum.org](https://www.RenfrewMuseum.org/taste-and-tour)
/taste-and-tour**