

der Wetterhahn

CELEBRATING OUR 36TH YEAR!

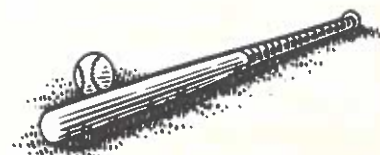


Volume XVIII, Issue 6 The Newsletter of Renfrew Museum & Park

Spring 2011



Baseball...The Great American Pastime



Renfrew Museum is proud to present in our Changing Gallery this spring, a tribute to the *boys of summer*. We will present the history of the game, as well as featuring local stand-out performers. We hope many will enjoy our recognition of this great American sport.

It may be called the Great American Pastime-but for Nellie Fox, born Jacob Nelson Fox on December 25, 1927, it was a personal passion. "I don't think anyone ever liked to play more than I did," he said in 1965.



His first appearance in a game was with the St. Thomas team in 1937 as a pinch-hitter. The tale goes that the pitcher was so afraid he would hurt the nine-year-old that he threw the ball right down the middle; Nellie batted his first single.

He wasn't the tallest player at 5 feet, 9 inches, but he was determined.



"All small men, all non-power hitters, must learn to bunt well. It's half your game," he is quoted as saying. Whatever he lacked in height, he more than made up for in steadiness, reliability, and constancy. "Fox is what you'd call a manager's ballplayer. He does his job expertly and he does it every day. He's the type of player you can count on. He's an old pro. A great many times, he is hurting pretty badly from the dumpings he's taken on the field, but he's always ready to play," said Al Lopez, Hall of Fame Manager.

His trademark was a hunk of Red Man chewing tobacco bulging in his jaw and thick-handled bat. The change in bat from a relatively thin one, to the more substantial one gave him a sturdier whack, which along with a wider stance, improved his hitting power. He was also ambidextrous when playing, batting left handed, while right handed.

Some stats put his accomplishments into perspective:

- played in 2,637 games
- was the first White Sox player to be named American League's Most Valuable Player in 1959
- won the Gold Glove Award in 1957, 1959 and 1960
- batted over .300 six times
- had 2,663 hits, 355 doubles and 112 triples
- led the league in singles for seven straight years
- went a record 98 games with no strikeout.

-IN THIS ISSUE -

Baseball...The Great American Pastime	Page 1
Baseball...The Great American Pastime (cont'd); Max Bishop	Page 2
Soliciting Support for the Traveling Trunk;	
The Filbert Fraktur	Page 3
Waynesboro Baseball	Page 4
Waynesboro Baseball	Page 5
Meet the New REC Members	Page 6
Meet the New REC Members (continued);	Page 7
Polishing Bell	
Meet the New RCI Member- A J Benchoff;	
Renfrew Wish List	Page 8
RCI Members; REC Members; Museum staff;	
In Remembrance; Renfrew Volunteers;	
Recognition of Recent Contributions	Page 9
Individual Members; Family Members	Page 10
Family Members; Sustaining Members; and	
Renfrew Society Members	Page 11
Renfrew Gift Showcase; Upcoming Events	Page 12



In his inimitable fashion, Yogi Berra offered an appraisal of Fox's talents: "Nellie Fox, that little son of a gun, was always on base and was a great hit-and-run man. He sprayed hits all over."

Fox was born in St. Thomas, Pa. where he was known as the best baseball player in the town. But it was not until his father agreed to take him to Frederick, Md. where the Philadelphia A's were in training that he started up the ladder to his baseball career. We have a copy of the letter Nellie's mother wrote to baseball great Connie Mack requesting he give her son a try-out in our exhibit.

In his first season, he started with Lancaster, a Class-B team with the Pennsylvania Interstate League. Then his contract was purchased by Philadelphia in 1946, although he did not play as he was serving with the U.S. military in Korea. After his return, he played with Lancaster and also with Lincoln in the Class-A Western League. In June of 1948 he married Joanne Statler, they had two daughters—Tracy and Bonnie.

In 1949 he moved to the majors, signing with the White Sox. By 1951, he was considered one of the most dependable players, a strong second baseman, and was named an All-Star Player for the first, of twelve times.



Nellie with White Sox

During his time with the White Sox, Fox's name was well known and he was heralded by fans as "the Mighty Mite." As he said, "You don't have to be big to be a big leaguer. Look at Phil Rizzuto. He's really small and he's been one of the greatest that ever was."

When Fox left the White Sox he headed south to the Houston Colt 45's, where after a stint as a player, he moved on to coaching for the Houston Astros.

In 1968, he joined the Washington Senators, as part of the Ted Williams' staff, and moved with them to Texas in 1972. A year later he was diagnosed with cancer and passed away on December 1, 1975.

In 1997 at the ceremony for his induction into the Baseball Hall of Fame, his widow, Joanne, spoke to the assembled, saying "He played the game with all his heart, all his passion and with every ounce of his being."

Baseball Notables

Max Bishop was born in Waynesboro on September 5, 1899, played in the major leagues as a second baseman for twelve years, first with the Philadelphia Athletics (1924-1933) and then with Boston Red Sox (1934-1935).



As his major league career began to wind down, he joined the Portland Beavers. health problems surfaced and he wound up his career scouting for the Detroit Tigers.

A highlight of his post major league career was his coaching at the U.S. Naval Academy in Annapolis from 1938 to 1962. During those years the team achieved a 306-143 record. In his honor, the 5000 seat baseball stadium, where the Army-Navy game is played is named for Bishop.

Bishop died in his sleep in 1962 while in Waynesboro for his mother's funeral.

Thomas Brookens, born in Chambersburg in 1953, started his major league career with the Detroit Tigers, where he won a World Series ring in 1984. He moved to the New York Yankees in 1989 and the Cleveland Indians in 1990.



In 2005 Brookens moved on to manage a team in the Detroit Tigers minor system and continued in the minors until the Tigers hired him as their first base coach, a position he still holds.

Don Heffner was born in Rouzerville on February 8, 1911. He moved up the ranks of baseball to reach the major leagues as a player and manager. He started with the Baltimore Orioles in 1929, then in 1934 joined the New York Yankees where he played with Babe Ruth and Lou Gehrig.

More teams followed, St. Louis Cardinals, Philadelphia Athletics, and Detroit Tigers. In 1964 he became the coach of the New York Mets.

In 1989, at the age of 78 he died in Pasadena, California and is buried at Altadena, California cemetery.





Soliciting Support for the Traveling Trunk

Renfrew Museum and Park has received a grant from the Alexander Stewart, MD Foundation for the past two years to be used to take the museum's "Traveling Trunk" program to local Senior Citizens. We are again applying for this grant in 2011. This Foundation provides monies primarily for human services and mental health, including support for historical societies and libraries. They award grants to non-profit organizations in the counties of Cumberland, Franklin, Fulton and Perry. This money is helpful, but not enough for full funding. We have appealed to a local donor to help, which he graciously did in 2010. This article is an appeal to others, who may wish to contribute. There are places, which we have not been able to visit yet, for lack of funding. If you can assist, please contact the office at the museum-762-4723.

Readers of this newsletter are familiar with the Traveling Trunk program, which is an outreach program of Renfrew Museum. An expanded trunk (and supplementary tote) is filled with museum artifacts, which are passed around, identified, and commented upon by those participating under the direction of a museum staff member. These historical items are chosen to be interesting and represent different aspects of living in the past, to elicit stories, making it an entertaining activity, not just a lecture. We encourage the participants to tell of their experiences, or retell stories passed down through generations. Like dominoes lined up in a row, these tales bring on others' stories...and smiles all around.



In its fourth year, the Traveling Trunk is becoming well traveled, visiting many retirement communities, nursing homes, assisted living facilities, and Senior Centers from Shippensburg to Frederick, MD.

We welcome any inquiries for civic or church groups also. Our motto is, "Have trunk, will travel".

The Filbert Fraktur

Discovered in the Renfrew archives is a 200 year old fraktur providing a direct link to the ancestors of Emma Nicodemus. It is a stunning example of this art form and with its connection to Mrs. Nicodemus an important addition to the collections of Renfrew.

The certificate or taufschein recorded the birth of Thomas Jefferson Filbert, the son of Thomas Filbert and Maria Selzer Filbert. The young child was born on November 27, 1810, and baptized on March 12, 1811 by Rev. Letus.

The fraktur is quite simple in style. Two rectangular boxes are separated by a cherub holding a golden horn near the top. Two tall angels-one in blue and one in pink full-length garments and standing on blue clouds-frame the sides. The blue angel holds a lyre in her right hand and a bird perches on her left. Her counterpart holds a laurel wreath in one hand and a stringless lyre in the other.

In the center, a modified cross shape contains verse in German and is embellished in two places by a image of a lyre and wreath and further down, a horn of plenty. In the lower portion, are four different birds (two on each side) standing on flower branches.



The fraktur features six sections with poetry texts related to baptism and the afterlife.

Reading, Pa. seems to have originated the Angel Taufschein, according to The Fraktur-Writings or Illuminated Manuscripts of the Pennsylvania Germans by Donald A. Shelly. It was the first place to use this design and also took the lead in making vertical Tauscheins. John Ritter of Reading, Pa. , was a major producer of these angel forms.

Thomas Filbert was the biological grandfather of Emma Nicodemus. Her grandmother Adelaide, left widowed, married Samuel Hoeflich. The Hoeflich portrait hangs over the mantel in the front parlor of the Museum.

The Filbert fraktur, along with the four other frakturs will now hang in the upper passage way.



Waynesboro



Wood Butcher Ball Club



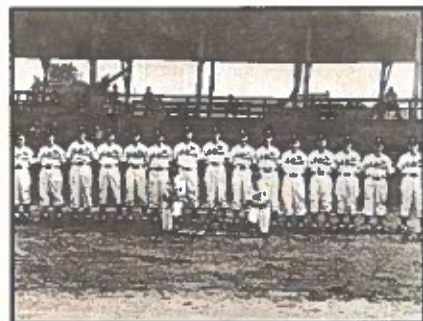
Batter up!



Can you identify this team?



**1949 Washington County
League**



**Waynesboro Baseball Team
In "Old" Orioles Uniforms**

Photos courtesy of Waynesboro Historical
Society-Ringer Collection



Baseball



**1948 Waynesboro High School
Team**



**1947 American Legion
Post 15
Team**



**1932 Waynesboro Eagles
Baseball Team**

Photos courtesy of Waynesboro Historical
Society-Ringer Collection



Meet the New REC Members

Renfrew Executive Committee has added 7 new members to the existing members. These are the folks who are the managing committee. We are very excited about having them join our organization and are sure they will all bring fresh new ideas and enthusiasm to Renfrew.

Dade Royer

Born and raised in Waynesboro, and graduated with WASHS class of 1974. He moved back to Waynesboro last year after living in the Harrisburg area for 12 years. For the past 15 years, Dade, has been owner of The Bridge Group, an executive search and recruitment firm specializing in health-care and manufacturing. His wife, Wendy Royer, is the superintendent of the School District of Springfield Township. Two sons-Tyler, who lives in Waynesboro and is a Wilderness Coordinator at Vision Quest, and Jared, who lives in New Cumberland and is a General Manager of LA Fitness in Harrisburg. To complete the family are two dogs-Gunther an English Bulldog, and Pedro, a longhaired Chihuahua.



Note: Dade Royer is a descendent of Daniel Royer.

Barbara McCracken

Born and raised in Roadside, a graduate WASHS, Barbara (Henicle) McCracken is both creative and energetic. She and her husband, Richard reside in a large stone house on Welty Road. Retired from the Senate of PA-(office on Terry Punt)-Barbara remains active with the family of 4 children and 6 grandchildren, and participates in community activities. Her interests, other than decorating (at which she excels) are-gardening, quilting and boating.



Bob Benchoff

Bob Benchoff is a Waynesboro native. As a teenager he attained the rank of Eagle Scout. Following graduation from Waynesboro Area High School he earned a B. S. in Elementary Education at Penn State, taught 35 years in the Waynesboro Area School District, and retired in 2005. He participated in many of the Renfrew Institute classes with his students, and recently co-taught with Bob North as an Institute guest instructor for the summer program, "Old Friends Are Worth Saving".

Bob served six years with the Waynesboro PA Army National Guard unit during the 1970's. He and his wife, Shelley, celebrated their 40th wedding anniversary in 2010, and have three daughters and eight grandchildren.



He is a lifelong active member of the Church of the Apostles, UCC in Wayne Heights with a special interest in theology, outdoor ministry and Habitat for Humanity. He continues to be active with auction and appraisal work, having graduated from the PA School of Auctioneering in 1980, served a year apprenticeship, and was licensed as an auctioneer by the state of PA in 1981. His interests and pastimes include family activities, being outdoors, nature, pets, watergardening, fishing, walking, biking, guitar, history, antiques, reading and home improvement projects.

Terry Barkdoll

Terry L. Barkdoll has been an avid antique collector for many years, especially of John Bell pottery and Pen Mar Park items. At one time he had close to 350 Bell pieces and about the same of other well-known potters.



Terry, a Waynesboro native, is married to real estate agent, Linda. They have two sons and one grandson.

For some 17 years he operated Happles Flower Shop and Greenhouse on Oller Avenue, where they handled from food plants to floral designs. After the shop sold, Barkdoll went to work for the Borough of Waynesboro for 31 years and is now enjoying retirement.

In addition to Renfrew, he is a member of the Lion's Club, the American Legion, Eagles Club, and Masonic Lodge 586.



Rick Shindle

A native of Waynesboro, Rick Shindle graduated from WASHS. His interest in antiques started early on and became a life-long passion.



Rick received a Bachelor of Arts degree in history, specializing in Early American History.

Shindle was a 20 year law enforcement officer in the state of California, and was in the antiques business for 35 years.

Now retired, Rick and his wife Julie have 2 grown daughters.

As an outgrowth of a devotion to antiques, he repairs wind-up phonographs and clocks.

Douglas Burkholder

Doug Burkholder has always called Waynesboro home.



Now the president of Burkholder & Company, a local CPA firm, he has 15 years of public accounting experience.

Burkholder has served as a member of the Renfrew Executive Committee in the past, as well as director and treasurer for several other nonprofit boards.

A graduate of George Washington University, Doug resides in Waynesboro with his wife and two children.

Wayne Martz

A graduate of WASHS, Wayne served in the Navy for 5 years on a Mark 10 carrier. After returning to PA, he obtained an Associates degree from Penn State in mechanical engineering. Then, his career path led him to own and operate Martz Plumbing and Heating for 30 years.



Now retired, Martz enjoys fishing, hunting and volunteering. In addition to Renfrew, he is a V.P. for the Franklin Co. Shriners. He and his wife Debbie have two daughters and one granddaughter.

Polishing Bell

Just as you have cleaning tasks at home, so do we at Renfrew.

One cold January morning a small band of people, staff plus volunteers David Hykes, Richard "Red" Mohn and Eugene Martin, set forth on the cleaning of the "Bell".

Step one was removing all the pottery from the glass enclosure. Next step involved the checking and further securing the wall units, which held the precious ceramics.

Next came cleaning and photographing each item in the collection. It was necessary to re-number each piece because of the addition of 6 more articles. Three of those were donated by Steve Graham, adding to the Steck/Graham Collection. The other unique examples were brought from the display in the Museum.

Finally, everything was put into its place in the glass case. A collective sigh of relief was heard from all in the room.

Work was not yet finished. A new data base, created by staff member Jim Diller, was implemented. The data base will give a complete record with a description, photograph and number of each artifact.



Graceful earthenware pitcher, highly glazed w/green glossy glaze. Handle has notches for grips. Flattened lip. Mint condition.

Opening Day is coming shortly, John Bell and family will once again take the spotlight in the Visitors Center. The arrangement of pottery will not only be stunning, but well polished.



Meet the New RCI Member A. J. Benchhoff

Andrew (A.J.) Benchhoff has been a life-long resident of the Waynesboro area, and graduated in 1995 from the Waynesboro Area Senior High School. He is a member of the Waynesboro Lion's Club, Trinity United Church of Christ, and the Waynesboro American Legion Post 15. He previously served on the Board of the Alexander Hamilton Library and the Consistory of Trinity United Church of Christ and was Chair of the Young Lawyers Division of the Franklin County Bar Association from 2006-2009. Currently, he serves on the Board of the Waynesboro YMCA and Renfrew Committee, Inc. (RCI). He earned his Eagle Scout Award in Waynesboro in 1993 and also served on the Waynesboro Borough Council in 2004 and 2005.

A.J. received his B.A. in political science, graduating magna cum laude, and in 1999 graduated from Mount Saint Mary's College, now Mount Saint Mary's University. He attended law school at the Dickinson School of Law of the Pennsylvania State University and obtained his Juris Doctor in 2002. He was admitted to the Bar of the Commonwealth of Pennsylvania in October 2002, and is a member of the Franklin County and Pennsylvania Bar Associations.

A.J. partnered with Don Kornfield in the firm Kornfield and Benchhoff, LLP, on February 6, 2004. Kornfield and Benchhoff, LLP is a general practice firm. A. J. focuses his legal work on real estate and business transactions and civil and orphan's court litigation. He prepares wills, powers of attorney and living wills and settles estates. He also represents clients with regard to zoning and other land use matters before municipal governments throughout Franklin County, simple divorce matters, and child custody matters.

A. J. has a special interest and love of all things Renfrew, including Renfrew Museum and Park and the Renfrew Institute. His maternal grandfather, Ed Miller, was caretaker of Renfrew Museum and Park for many years and he has fond memories of spending time with his grandfather there. Throughout elementary school, he attended field trips to Renfrew Museum and Park and completed programs offered to students through Renfrew Institute.

He also oversaw the completion of 10 split-log benches using antique tools for his Eagle Scout Project at Renfrew Museum and Park. To this day, A. J. and his family use Renfrew Museum and Park for trail hiking, stream wading, and other recreational activities.

He looks forward to attending Jazz Fest and Pumpkin Fest each year.

He is honored to serve on the Board of RCI.

A.J. is the son of L. Joe and Liane Miller Benchhoff, and is happily married to his best friend Katie, and resides in Waynesboro with his wife and their 4 year old son, Henry.



Renfrew's Wish List

- Flint drinking glasses
- Large butchering kettles
- Pewter or wood plates
- Outdoor speaker system
- Pre-1840's drinking glasses
- Large ice chests
- Sponsors for events in 2011 and 2012
- Volunteers-in all areas for 2011 and 2012
- Local history books
- Perennial (non invasive) plants for the Museum yard
- Items for Oktoberfest live auction
- Brass trivet for dining room fireplace
- Used 6-inch or longer candles, or long-burning votives for Christmas Open House luminaries

Listed above are a few items that would enhance our programs and facilities. All contributions to Renfrew Museum and Park are tax deductible, as allowed by law. If you need assistance with a pick up of items, please call 717-762-4723, and we would be happy to arrange a time. Thank you for your continued support!



Renfrew Committee, Inc.
Members -2011

Douglas Tengler-President
Allison (Allie) Kohler, Vice President/Director
David Hykes, Vice President/Director
George Buckey-Treasurer and Director
A. J. Benchoff-Director
Judge John W. Keller-Director
Alice McCleaf Director and Assistant Director

Renfrew Executive Committee
Members -2011

David Hykes-Chairman
George Buckey-Treasurer
Allie Kohler
Terry Barkdoll
Robert Benchoff
Doug Burkholder
Steve Graham
Wayne Martz
Barb McCracken
Richard "Red" Mohn
Tom Moore
Virginia Rahn
Dade Royer
Rick Shindle

Renfrew Museum and Park
Employees -2011

Bonnie Iseminger-Administrator
John Frantz-Supervisor of Buildings and
Grounds
Bob North-Traveling Trunk Outreach
Cheryl Keyser-Visitor Services Personnel
Judy Elden-Visitors Services Personnel
Jim Diller-Maintenance Personnel

In Remembrance

We regret the passing of Mrs. Katharine Florence, mother-in-law of long-time board member Richard "Red" Mohn on Thursday, March 10th.

Renfrew Museum and Park
Volunteers-2011

Bonnie Barlup
Cookie Beck
Marilyn Bender
Linda Blubaugh
Dan Carbaugh
Phyllis Croson
Teena D'Annibale
Karen Day
Peggy Etter
Phyllis King
Carolyn Krouse
Carol MacDougall
Eugene Martin
Eleanor Miller
Alice Noll
Gretchen Potochney
Virginia Rahn
Bernadette Ramondi
Helen Shelley
Roy Struble
Carol Thornburg
Mary Unger
Craig and Judy Welterlen

Recognition of Individuals and Business
Organizations for Recent Contributions to
Renfrew Museum and Park. Thank you!

Donation to Traveling Trunk Program-Steve Graham
Donations to the Steck Graham Collection-Steve Graham
Appraisals- Bob Benchoff
Donation of flip glass and a Jacob Stoner book- Rick Shindle
Donations- Eugene Martin
Donation-The American Legion Post 15-Waynesboro
Donation-B.S. A. Pack no. 88
Use of Ringer photos of Waynesboro Baseball Teams-
Waynesboro Historical Society
Assistance with Changing Gallery Exhibit-David Hykes, Red
Mohn, Eugene Martin and Alice McCleaf, Joanne Fox, Wil-
liam Spigler, William Elden



**Individual Members
2011**

Mr. and Mrs. Richmond Adkins
Alberta R. Barkley
Bonnie Barlup
Mrs. Sharon Bates
Grace M. Baylor
Marilyn J. Bender
Ferdinand and Frances Betts
Myrna Binkley
Linda Blubaugh
Nancy K. Brake
William Brevard
Jean Brinser
Barbara Brown
Beth Bryant
Thomas Buckey
Susan Carpenter
Ruth Ann Coe
Elizabeth Cook
Phyllis Croson
Ruth Mary Davis
Daniel Deatrich
George Dempsey
Becky Dietrich
Betsy Domitrovich
Darrell C. Edwards
Robert L. Evans
Eugene Gardenour
Dr. W. Lehman Guyton
Virginia Hair
Jack Handshaw
Carol Ann Henicle
Tracy E. Holliday
Joyce Horst
Helen Hykes
John Hykes
Kim Kleppinger
Phyllis King
Ms. Christina A. Kostka
Adele Lombard
Ritchard Lyon
Ann B. Markell
Louise (Tina) Martell
Elizabeth Mose
Aldine N. Moser, Jr.
H. Clayton Moyer
G. Barr Newcomer
Bob North
Doris Pensinger
Alesia A. Peransu

**Individual Members
2011**

Anita Pfeuffer
Murray B. Reed
Jean Rosenberger
Marilyn A. Ross
William R. Russell
Helen E. Shelley
Melodie Anderson-Smith
Bill Savage
Rick Shindle
Karen Shinn
Laura Shull
William H. Smith
Doris Spangler
Mayor Richard Starliper
Roy Struble
Lois Good Thompson
Lillian D. Watkins
Philip Wert
Louise West
Mr. Emmert Whitaker
James R. White
Mr. and Mrs. Philip Wishard
David Wolf
Peggy Wright
Doris M. Yeager
Donald Yost, Jr.
Sarah Zimmerman

**Family Members
2011**

Lou and Jackie Barlup
Mr. and Mrs. Stephen Beck
Robert and Shelley Benchoff
Eugene and Laura, Benjamin and Molly Bender
Frank and Shirley Bittner
Dr. Garrett Blanchett & Elena Kehoe
Donald and Dorothy Bollinger
Patrick and Anita Brezler
Don and Phyllis Brothers
Grace and Bob Brown
Ray and Shirley Brown
Kenton and Audrey Broyles
Margaret Honodel and Clyde Bryner
Mr. and Mrs. Douglas Burkholder and Family
Steven M. Champlin
Mike and Stacey Clever
Ronald and Mary Jane Collins



**Family Members
2011**

William and Anne Conrad
Evie and John Cook
Ms. Peggy Corley
Bonnie and Frank Damazo
James and Margaret Deegan
William Dick
Kay and Diane Diffenbacher
Mr. and Mrs. G. Mark Elden
Mr. and Mrs. Weldon Eshelman
Ms. Audrey Eshleman
Alice and Jim Fisher
Jim and Connie Fleagle
John and Jean Frantz
Doris and Bob Goldman
Charlene L. Good
Stanley and J. Darlene Grube
Pat and Jay Heefner
Gordon and Sylvia Heidelbach
Margaret Honodel and Clyde E. Bryner, Jr.
David, Diane and Amanda Hykes
Ruby Hykes
Bonnie and Bob Iseminger
Paul and Joan Jones
D. Mark and Elisabeth H. Keener
David and Dawn Keller
Mr. and Mrs. Charles Kennedy
Will and Jill Kessler
Allison and JoAnn Kohler
Bill and Kathleen Komminski
Chris and Alli Kopco
Charles Mancini and Gayle Ann Underwood
Eugene D. Martin
Richard and Martha Mathias
Wayne and Debbie Martz
Donald and Alice McCleaf
Barb and Dick McCracken
Dr. and Mrs. James G. McKenzie
John and Pat Malarz
Melissa March
Sharon March
Mr. and Mrs. Edward Miller
Mr. and Mrs. Ray Miller
Richard and Wendy Mohn
Molly Snyder Moran
Harry and Jill Morningstar
Harry and Louise Morningstar
Rick and Debby Mouer
Paul and Phyllis Mummert
Tom and Alice Noll

**Family Members
2011**

Howard North
Evelyn and Jim Oliver
Doug and Ginny Parks
Michael and Sarah Pecotte
Mr. and Mrs. William Pflager
John and Carolyn Poffenberger
Willard and Virginia Rahn
Jeff and Bonnie Rhodes
Richard and Jean Rose
Dade and Wendy Royer
Mr. and Mrs. Richard Shew
Mr. and Mrs. Linden Showalter
Mr. and Mrs. William Shull
Mitchel and Katherine Smith
Stephen and Bonnie Smith
Susan Smith and Donald Barthalow
Dr. and Mrs. Robert G. Steiner
Elizabeth and George Stonesifer
Douglas Tengler
William and Sandra K. Weagly
Craig and Judy Welterlen
Mr. and Mrs. Charles Willhide
Andrew and Yvonne Yoder
Sara and Neil Yost
Robert and Linda Zimmerman

**Sustaining Members
2011**

Martha Adams
Terry and Linda Barkdoll
Mr. and Mrs. Thomas Beck
Mrs. Nancy Evans
A. Owen and Georgia Freas
Dr. A. Kathryn Oller
Wacco Properties

**Renfrew Society Members
2011**

Mike and Denise Beck
George and Martha Buckley
Barbara Gaydick
Steve Graham
Jeanmarie Walz
Charles and Undine Warner
Alice G. Weagly
Carol Young—Mountain Valley Real Estate



Renfrew's Gift Showcase

Gift shop hours until May 7th-Monday- Friday
noon until 4 p.m. and closed on weekends.

Gift shop hours after April 30th- same as museum
hours: Tuesday-Friday-noon-4:00 p.m.

Saturday and Sunday 1:00-4:00p.m.

Closed on Mondays

New items, including decorative rooster butter
molds and other items to tempt you! Stop to see
us... we're worth it!

Bonnie Iseminger-Editor

Contributors: Cheryl Keyser, Bonnie Iseminger, and
Bob North

Photos: Bonnie Iseminger-Waynesboro Historical
Society

Renfrew Upcoming Events

Saturday, May 7- Opening day at Renfrew Museum-Base
Ball!- 1:00p.m.-4:00 p.m.- visit with Mrs. Nellie Fox and
see the array of baseball memorabilia in our Changing Gal-
lery.

Saturday, June 25-6:00 p.m. Enjoy the melodic sounds of
the Navy Cruisers. This free concert is sponsored by The
Franklin County Visitors Bureau. In the event of rain, the
Waynesboro Middle School auditorium will be our concert
site.

Monday, July 11th-7:00p.m. Waynesboro's own Wayne
Band will perform in the backyard of the Museum House.
Bring your blankets or lawn chairs. No alternate location
in the event of inclement weather.

der

Wetterhahn

Renfrew Museum and Park
1010 East Main Street •Waynesboro, PA 17268
(717)762-4723 Email: renfrew@innernet.net
Website: www.renfrewmuseum.org
Return Service Requested

Non-Profit Org.
U.S. Postage
PAID
Waynesboro, PA
17268
Permit No. 405