

# der Wetterhahn

CELEBRATING OUR 35TH YEAR!



Volume XVIII, Issue 4 The Newsletter of Renfrew Museum & Park

Summer 2010

## Snow Hill Collection— a New Addition

Renfrew has added to its collection of items from the Snow Hill Cloister (Kloster in German) a stunning two-piece secretary desk with glass-door-enclosed shelves above and a slant front over one drawer on the lower half, estimated to date from the early 1800's.

Steve Graham, a member of the Renfrew Executive Committee, bought the artifact at the Hurley Auction Center and donated it to Renfrew Museum in the name of his grandparents Harry A. and Helen Graham. "I was attracted to the desk as a beautiful piece of workmanship and because it was from Snow Hill," said Graham.

Constructed of poplar wood, the features include crown molding on top and inside walls of the top section that are covered in a rose-floral paper over mustard yellow paint. The drawer under the desk lid contains three small additional drawers, although one is missing. The distinctively turned legs rest on charming ball feet.

"There are not many Snow Hill pieces on the market so this is an important find and, as a unique piece, a significant addition to our collection," said Red Mohn, Chairman of Renfrew's Accession Committee.



Added David Hykes, Renfrew Executive Committee Chairman, "the piece is not in perfect condition, and will need restoration, but it is a classic example of the work of the Cloister."

What is Renfrew's relationship to the Snow Hill Cloister? There is a direct line from the Snow Hill to Renfrew through Nancy, the youngest daughter of Daniel Royer. She married Peter Fahnstock, whose father Andrew was an elder at Snow Hill.

Officially known as the Seventh Day Baptist Monastic Society of Snowhill, the Cloister was a spin-off from the Ephrata Cloister. It was a utopian, celibate community, commonly known as the Nunnery. (When the railroad operated between Mont Alto and Waynesboro, a stop was called the Nunnery.) One student of the institution suggests that it should more properly be called a commune as everyone worked together as one large family.

### -IN THIS ISSUE -

<b>Snow Hill Collection— A New Addition</b>	<b>Page 1</b>
<b>Snow Hill Collection— a New Addition (continued)</b>	<b>Page 2</b>
<b>Smithsonian Museum Day; Blue Star Families; A Life Well Lived</b>	<b>Page 3</b>
<b>Music in the Park</b>	<b>Page 4</b>
<b>Music in the Park</b>	<b>Page 5</b>
<b>Support for the Traveling Trunk, OLLI and Renfrew</b>	<b>Page 6</b>
<b>Renfrew Museum and Park Members; In Remembrance; Recognition of Individuals and Business Organizations for Recent Contributions to Renfrew Museum and Park; Renfrew Committee Members; Renfrew Executive Members; Renfrew Museum and Park Staff Members; Volunteers</b>	<b>Page 7</b>
<b>Renfrew Showcase; Renfrew Upcoming Events</b>	<b>Page 8</b>

continued page 2



In 1762, George Adam Martin left the Ephrata Cloister to explore the possibilities of expanding the religious teachings of Conrad Beissel who had separated the Dunkard Church. Martin became a leader of the congregation. Among his converts were a family of Swiss immigrants, the Schneebergers (German for Snow Hill).

The land where Snow Hill sits was purchased in 1763 by Catherine Snowberger. The patent, however, was given to her nephew, Andreas who held it until 1825. Before he died, it was passed to the five trustees who were the founders of the Snow Hill Society.

The grist mill was established in 1807, the community house in 1814, the church in 1829; other buildings built as needed between 1814 and 1843. The community house was two stories high and measured thirty by forty feet in length. On the upper floor was the "Saal" or chapel where meetings were originally held. A second house, also two stories, was built in 1835 measuring thirty feet square. Later additions were added, with all of the buildings set next to each other to form 150-foot-long building which looked like a single house.

Life was simple. Members rose at 5 a.m. when the great bell was rung. Meals were served at specified times, with a prayer before and a hymn in thanks after. The men and women ate separately. The men dressed in Quaker fashion, while the women wore a plain dress with a large white handkerchief around their neck, pinned on the front of the dress.

During the week, members of the Cloister were kept busy doing various chores and operating the farm, mill, and producing and selling textiles, grain, barrels, brooms, furniture and pottery.



On the Sabbath (celebrated on Saturday) services were held at 2:00 p.m., officiated by the Vorsteher teacher or leader. These consisted of singing, scripture reading, prayer, sermons, and the reading of theological works.

The printing press was kept busy producing religious tracks and music. In fact, the Cloister was known for its music, called heavenly by one listener. Another described it as a falsetto with the singers barely opening their mouths or moving their lips. The music was written in four, six, and seven parts with the lead sung by the strongest female voice.

When the lasting surviving member, Obed Snowberger, died in 1895; some of the Snowberger heirs sued to obtain the property. In 1900 the Franklin County Court ruled that the property was to be held in trust for the Seventh Day Baptist Society and any income derived would be designated for property repairs.

Over the next years, the buildings were used as the residence for the pastor and his family and services continued to be held.



On August 11, 1997, the remaining contents of Snow Hill were sold by the Horst Auction Center in Ephrata.

According to an article in the *Maine Antique Digest* of May 1997, "most of the furniture was made there in the cabinet shop, and everything is in as-found condition, most of it paint-decorated." It also refers to the adult cradle, monogrammed sheets and pillow covers and the "forty matching slip-decorated redware serving bowls in fine condition, probably by the John Bell family."

Juniata College holds a large collection of Snow Hill documents, including letters, hymnals, ledger books, prayer books, and fractures.

#### Poem from Snow Hill

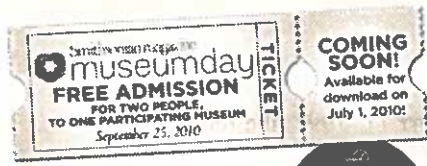
"Not enjoyment and not sorrow  
is our destined end or way;  
But to act that each tomorrow  
Finds us better than today."



This year marks the 6th annual Museum Day hosted by Smithsonian Media, in which over 1200 museums celebrate culture and learning.

**Particulars:**

The Museum Day ticket, available from Smithsonian Magazine website will provide free admission to one person, plus a guest, to one participating museum on Saturday, September 25. ( One ticket per household.) A list of museums taking part in this one day opportunity can be found on the Smithsonian Magazine website-[www.smithsonianmag.com](http://www.smithsonianmag.com)



The Smithsonian Museum houses work by Renfrew's featured artist, Emily Clayton Bishop in its Luce Foundation Center for American Art.

In recognition of Museum Day 2010 and Renfrew Museum's participation as one of the museums in the promotion, we are extending the Emily Clayton Bishop exhibit until the end of our season on October 16. This will enable anyone wanting to experience the extraordinary works more time to visit.

**A Life Well Lived...**

On May 15th, a white oak tree was planted on the grounds of Renfrew in memory of Ann Brown, a local resident and well-known artist. "I hope the tree lives for a hundred years," said her husband, Bill, who came from Florida for the occasion.

Also present for the ceremony were her daughter, Gail Seilhamer, of Waynesboro, her son, Alan Brown, from Austin, Texas and many close friends.

Renfrew Museum and Park has joined over 700 national museums as an official member of the Blue Star Museums program of the National Endowment of the Arts. For Renfrew, this offers an opportunity to become nationally known.

Under this umbrella all active military personnel and their families are granted free admission to participating museums through Labor Day, September 6,2010.

"We are excited to be participating in this national program," said Renfrew Administrator Bonnie Iseminger.

Included are all active duty military of the Army, Navy, Air Force, Marines, and Coast Guard and five immediate family members. Military personnel must present an identification card bearing the insignia of the Geneva Convention Common Access Card (CAC) or DOD forms 1173 or 1173-1.

"America's museums are proud to join the rest of the country in thanking our military personnel and their families for their service and sacrifice," said National Endowment for the Arts Chairman Rocco Landesman.

Blue Star Families is a national, non-partisan, non-profit network of military families from all ranks and services with a mission to support and empower military families. The program is part of its Operation Appreciation which seeks to connect military families to the larger community.

For more information on the Blue Star Museums, visit the National Endowment for the Arts at [www.arts.gov](http://www.arts.gov) Graphics courtesy of Blue Star Families-2010

**Memorials and Endowments**

Any monetary memorial gifts, endowments, or bequests for a particular event or collection that would carry your family name would be gratefully received.



## MUSIC IN THE PARK

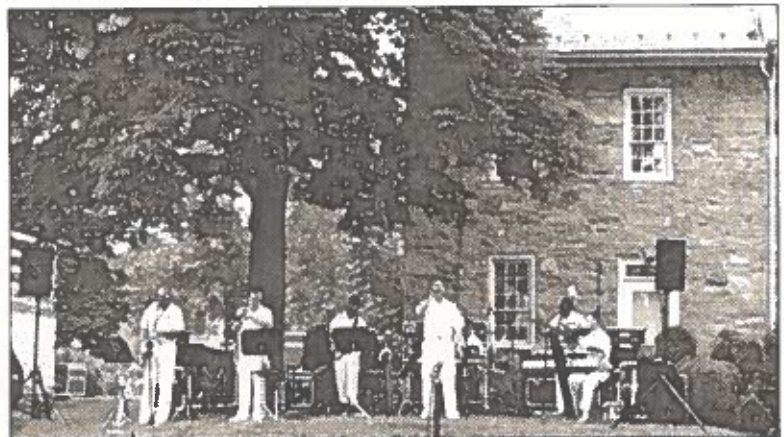
For the past three years, Renfrew has been pleased to host the U.S. Navy Cruisers in a summer concert in the park. This group is the U. S. Navy's premier contemporary music ensemble and their performances here have now become a Renfrew tradition.

Over 400 attendees were thrilled with the music; even the folks from Antietam Dairy were tapping their toes.

The Cruisers are not only accomplished as a group, but also as individuals. Just to highlight a few of the players: Kenneth Carr, acoustic guitar, attended Berkeley College and performed with Ray Charles. Percussionist Leon Alexander is a graduate of the Oberlin Conservatory of Music and performed with a number of well-known musical groups such as the Supremes, and jazz great, Ellis Marsalis. Pianist James Cody, was a child prodigy, beginning piano lessons at age 7, composing songs and performing solo in concert at age 12, writing music for a vocal jazz group at 15, and attending Interlochan Arts camp at 16.



**Moving to the music**



**Navy Cruisers in Concert**

## MUSIC IN THE PARK

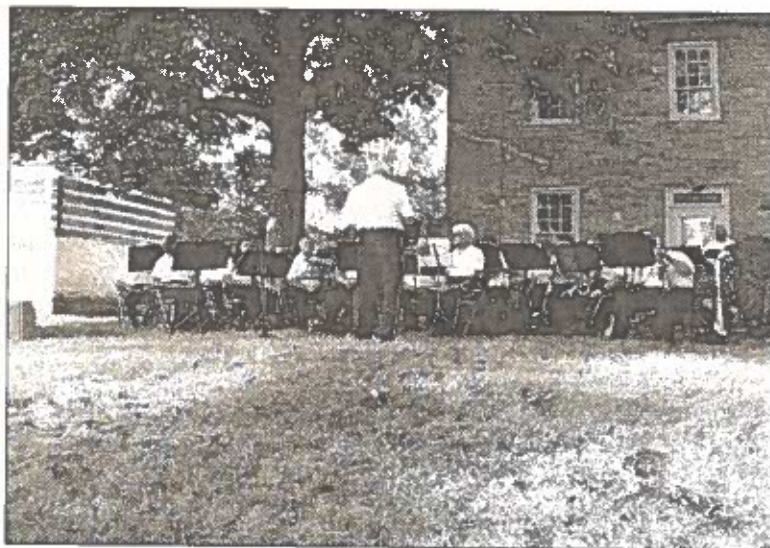
This summer for the second year, Waynesboro's own, the Wayne Band under the baton of Dan Deatrich, performed before a very appreciative audience. The evening with a gentle breeze added to the magic of the moment.

Formed in 1899, the Wayne Band is one of the oldest bands in the area and has performed continuously since then.

Members still practice in Main Street's Town Hall, formerly the Waynesboro Academy of Music, with rehearsals held every Monday.

"We do a broad range of music," said Deatrich, "with marches, show tunes, and the popular, 'A Symphony of SitComs,' based on the theme music of a number of old T. V. shows.

Of course the ever-popular "Stars and Stripes Forever" had the crowd clapping and singing along.



**Waynesboro's own— Wayne Band**



### Support for the Traveling Trunk

Renfrew Museum and Park has received a second grant from the Alexander Stewart, M.D. Foundation. Like last year, we were awarded \$500, using this money to take our museum's "Traveling Trunk" program to local senior centers. This Foundation provides monies primarily for human services and libraries. They award grants to non-profit organizations in the counties of Cumberland, Franklin, Fulton, and Perry.

Indeed, we did expand the program into Senior Centers in 2009. We started across the mountain in Emmitsburg. Folks from Carroll County heard about us and invited us to Frederick, as well as seniors in Washington County. A phone call or so to the Franklin County Agency of Aging led to going for presentations (and a complimentary meal!) at all eight of our county's senior centers. We must add, that to accomplish all of this and spread the money over so many sites, we did some negotiations about our fee, satisfying all concerned! In fact, the Traveling Trunk was so well received that most of these sites (and a few more) will have another visit in 2010.

The traveling trunk is an outreach program of Renfrew Museum. An antique trunk (and supplementary tote) is filled with select museum artifacts. During the presentation, these artifacts are first displayed, then passed around, while the audience is encouraged to handle and discuss the items among themselves. One at a time, each artifact is identified, facts about its use, origin, and modern replacement are elicited and commented upon by those participating by the presenter, a museum staff member. *The intent is to make this more of an activity than a lecture.* These historical items are chosen to be interesting, to represent different aspects of living in the past, and to elicit stories. We encourage the participants to tell of the experiences, or retell stories passed down through generations. Like dominoes lined up in a row, these tales bring on others' stories...and smiles all around.

If you can think of an organization that would enjoy an hour of "hands-on history," call and inquire.

One more thought: the grant money is wonderful, helping us reach more seniors, but we must also thank three donors, who wish to remain anonymous. These funds are multiplying our efforts. Perhaps you could help as well...

### OLLI and Renfrew

OLLI... perhaps some of you are thinking of that innocent, Stanley Laurel, as he would address his friend, Oliver Hardy. It's a nice memory, but Renfrew is now working in cooperation with another OLLI, the Osher Lifelong Learning Institute, affiliated with Penn State Mont Alto.

A happy confluence of events brought OLLI and Renfrew together last spring, resulting in us presenting a class for them called *Renfrew by Legend and Legacy*. This was well-received, and OLLI encouraged us to offer it again this coming fall, along with several other classes. We hope to do that on October 11th, a Monday. Hoping that you may join us, briefly, the class is advertised as follows:

Named for a legend, Renfrew was developed as a farmstead by Daniel Royer, a Pennsylvania German tanner, beginning in 1790's. His legacy has endured to this day. Participants will witness his legacy through things that can be seen and touched- by visiting the buildings, walking the land, and handling the artifacts. Immerse yourself in learning both the legends and the legacies. For lunch enjoy a catered picnic in the park!

The local OLLI is one of more than one hundred sites sponsored by the Bernard Osher Foundation. Their goal is to provide mature adults with stimulating activities, courses, and events over a broad spectrum of interests. Based at Penn State Mont Alto, they partner with other sites to host activities or classes, including Penn National, the YMCA, Quincy Village, and now Renfrew.

The folks at OLLI invite you to "Stretch your mind. Explore a new interest. Discover new ways to enjoy life with people who love to learn. Just like you. *Learning for Life.*"

For more information, contact OLLI at: Penn State Mont Alto, 1 Campus Drive, Mont Alto, PA 17237 or e-mail to: [term12@psu.edu](mailto:term12@psu.edu) or phone 717-352-7872.

Articles by: Bob North







**Renfrew Museum and Park  
Members**

Ms. Cheryl M. Keyser -Individual  
Mr. and Mrs. Mark Elden- Family  
Mr. and Mrs. William Conrad- Family  
Dennis and Janette Koons- Family  
Jason Levick & Family-Family  
Robert and Constance Morrow- Family

***In Remembrance***

It is with regret we mention the passing of  
Mr. William H. Gelbach, Jr. on May 31.  
A friend to Renfrew Museum and Park for  
many years, this interesting and very kind man  
shall be missed!

**Recognition of Individuals and Business  
Organizations for Recent Contributions  
to Renfrew Museum and Park**

**THANK YOU!**

Donation of WASHS photos- Marilyn Bender  
Donation of Snow Hill secretary desk-  
Steve Graham  
Assistance with research- John Hykes  
Assistance with the Renfrew Barbeque-David  
Hykes, Peggy Etter, Richard "Red" Mohn,  
Carol MacDougall, and the Diller family  
including: Michelle Diller, Kenny Diller and  
Timothy Diller  
Assistance with accessions- Alice McCleaf  
and Richard "Red" Mohn  
Concert in the Park- Wayne Band

**All who volunteer to  
Renfrew Museum and Park**

**Renfrew Committee, Inc.  
Members-2010**

Douglas Tengler, President  
Allison (Allie) Kohler, Vice President  
David Hykes, 2nd Vice President  
George Buckey- Treasurer and Director  
Al Porter- Alternate Director  
Judge John W. Keller, Director  
Alice McCleaf, Director & Assistant Secretary

**Renfrew Executive Committee  
Members-2010**

David Hykes, Chairman  
George Buckey, Treasurer  
Richard "Red" Mohn  
Thomas Moore  
Allison "Allie" Kohler  
Virginia Rahn  
Steve Graham

**Renfrew Museum and Park  
Staff-2010**

Bonnie Iseminger-Administrator  
John Frantz-Supervisor of Buildings and  
Grounds  
Bob North-Traveling Trunk Outreach  
Cheryl Keyser-Visitors Services Personnel  
Judy Elden- Visitors Services Personnel  
Jim Diller-Maintenance personnel

**Renfrew Museum and Park  
Volunteers-2010**

Bonnie Barlup	Anita Pfeuffer
Marilyn Bender	Gretchen Potocheny
Linda Blubaugh	Virginia Rahn
Phyllis Croson	Bernadette Raimondi
Karen Day	Eric Rottcher
Peggy Etter	Peggy Sandel
Anna Hartford	Helen Shelley
Phyllis King	Bill Smith
Chris Kostka	Roy Struble
Carolyn Krouse	Mary Unger
Carol MacDougall	Judy & Craig Welterlen
Ellie Miller	
Alice Noll	



**Renfrew's  
Gift Showcase**

Summer's here and there are many special occasions that require that perfect gift. New interesting stones, wooden bowls by Mr. G. Mullendore, new pendants by Anita Pfeuffer, and brick end barn posters by Phil Schaff are now available.

Gift Showcase hours are Tuesday-Friday noon until 4:00 p.m. – Saturday and Sunday hours are 1:00 p.m. until 4:00 p.m.

Bonnie Iseminger-Editor  
Contributors: Articles by: Cheryl Keyser, Bob North  
and Bonnie Iseminger  
Photos: Bonnie Iseminger

**Renfrew  
Upcoming Events**

September 18-10:00 a.m.-5:00p.m. Sixth annual Cumberland Valley Pottery Fest. Pottery for sale, as well as a silent auction.

September 25-Smithsonian Museum Day-Renfrew Museum will participate in this one day special event.

October 16– Annual Pumpkin Fest at Renfrew Park with Renfrew Institute-11:00 a.m.-4:00 p.m.

December 4 and 5– Annual Christmas Event at Renfrew– details later.

der  
**Wetterhahn**

Renfrew Museum and Park  
1010 East Main Street •Waynesboro, PA 17268  
(717)762-4723 Email: renfrew@innernet.net  
Website: www.renfrewmuseum.org  
Return Service Requested

Non-Profit Org.  
U.S. Postage  
**PAID**  
Waynesboro, PA  
17268  
Permit No. 405