

der

Wetterhahn

The Weathervane



Volume XV, Issue IV The Newsletter of Renfrew Museum & Park

Winter 2007

A Christmas to Remember

With Christmas fast approaching celebrations abound for this most treasured of holidays.

At Renfrew return to the days where Christmas was more of the gathering of friends and family with our annual Christmas Open House.

On Friday, December 7th and Saturday, December 8th from 6-8p.m. each evening enjoy the spirit of this joyous season.

In the museum house, aglow with candlelight, savor the musical selections of Dan Mack on classic guitar and Dr. Terry Musselman on the dulcimer.

The beautiful greenery and decorations, which adorn the museum house, are from the combined talents of members of the Blue Ridge Summit and Toll Gate Garden Clubs. Also, a special thank you to Anita

Pfeuffer for the lovely Christmas trees in the Changing Gallery and the Visitors Center bedecked with her scherenschnitte ornaments.

Do stop and linger at the exhibit in the Changing Gallery to view of an array of poinsettia collectables. A delightful mix of many items of this most favorite of Christmas symbols.

In the Visitors Center both evenings enjoy our delicious cookies and mulled cider, while being entertained by:

December 7th

Penn National Singers 6-7p.m.

Classic Cello selections by Mia Hoover 7-8p.m.

December 8th

Church of the Brethren Adult Handbell Choir under

the direction of Charlene Good 6-7 p.m.

Storytelling favorites by Ed Miller 7-8p.m.

The smokehouse will also be open for all to warm up or join in on the impromptu Christmas caroling from 6-8 p.m. both nights.

If you are unable to visit the evening sessions, we will have the museum house open on Saturday, Dec.8th from 2-4p.m. for gazing at the holiday greenery. Also, please call to see if we could accommodate (for a limited time), the week of December 10-14, your group with a special appointment of this holiday spectacle.

Special thanks to Wal Mart for sponsoring our annual Christmas Open House for the community to enjoy.

-IN THIS ISSUE -

Feature -A Christmas to Remember Page 1

Christmas Quotes; A Christmas Classic Page 2
A Christmas Custom...Barring Out the School-
master; O Christmas Tree! How are thy leaves so
verdant? Page 3

"For man, autumn is a time of harvest, of
gathering together." Pages 4 & 5

Spotlight on Visitors Services; News and Notes
Page 6

Recognition of Individuals and Contributors;
Renfrew Volunteers; Renfrew Committee,
and Renfrew Executive Committee members;
Renfrew Member news Page 7

Renfrew Gift Showcase; Events Page 8





Christmas
Quotes

A man is at his finest towards the finish of the year,
He is almost what he should be when the Christmas
season's here.

Then he's thinking more of others than he's thought
the months before,

And the laughter of his children is a joy
worth toiling for.

He is less a selfish creature than at any other time;
When the Christmas spirit rules him; he comes close
to the sublime.

Edgar Guest

It's Christmas in the heart that puts Christmas in the air.
W. J. Ells

Heap on the wood the wind is chill;
But let it whistle as it will,
We'll keep our Christmas merry still.

Sir Walter Scott

Christmas! Tis the season for kindling the fire of
Hospitality in the hall, the genial fire of the charity in
the heart.

Washington Irving

There's more, much more to Christmas
Than candlelight and cheer,
It's the spirit of sweet friendship
That brightens all year.

Unknown

So remember which December
Brings the only Christmas Day,
In the year you let there be Christmas
In the things you do and say.

Anonymous

I have always thought of Christmas time
as a good time; a kind, forgiving, charitable,
pleasant time;
The only time I know of in the long calendar year,
When men and women seem by one consent
To open their shut-up hearts freely.

Charles Dickens

At Christmas play and make good cheer,
For Christmas comes but once a year.

Thomas Tusser

Keeping Christmas is good,
But sharing it is better.

Arnold Glass

A Christmas Classic

The Christmas Classic, "A Visit from St. Nicholas", was written by Clement Clark Moore. He read it to his children, in their rural New York home on Christmas Eve 1822. That could have been the end of the story but for a visitor, Harriet Butler who copied it, with Mr. Moore's permission, and took it back to Troy, N.Y. There Miss Butler sent it anonymously to the local newspaper, the Sentinel.

On December 23, 1823 the first publication of the poem appeared in the Troy Sentinel without an author, or illustration. The editor, Orville Luther Holley, wrote a glowing preface to the poem. As they say, the rest is history!

For several years following the first publication of the poem the public sought to find the author. By 1830 a single illustration (a wood cut by Myron King) appeared with the poem.

Finally in 1837 Clement Moore relented and permitted the poem to be published with his name as author.

The first fully illustrated version appeared in 1848 in a periodical by Henry M. Onderdonk, a friend of Clement Moore.

A very elaborate reproduction of the poem was done by Mary Moore Ogden, a daughter of Clement Moore, in 1855 as a Christmas present for her husband. Each page was illustrated with drawings of stars, fruit, leaves and holly.

In 1890 the illustrator, Thomas Nast, depicted St. Nicholas as the world would come to know and love him.

St. Nicholas may have changed appearance over the years, but his message has never changed...

"Happy Christmas to all,
and to all a
good night!"





**A Christmas Custom...
Barring Out the Schoolmaster**

In the days before public schools Pennsylvania teachers, usually in parochial schools, were paid by the day. Typically that would amount to a penny and a half.

The dynamics of the pupil-teacher-parent relationship was quite different from today. It was from that environment that the pupils formulated a plan to take advantage of the instructor's situation.

Using their advantage, the students would lock out the teacher, usually a day or two before Christmas, to be admitted only if he would give each young scholar a gift. The gift would normally be either cookies or candy.

In addition to the gift, another stipulation would take the form of a declared holiday from school.

Not wanting to alienate the parents of the children, the teacher would succumb to the pressure of the circumstances and give the presents.

The custom was no longer practiced after the public school system came into effect in the 1830's. Thus came to an end of the practice of barring out the schoolmaster.

Source: Christmas in Pennsylvania
Alfred L. Shoemaker



**O Christmas Tree!
How are thy leaves so verdant?**

At this time of year there is nothing that delights our senses more than the delicious scents of Christmas...the smell of pine trees and the aroma of fresh pinecones!

As you select your Christmas tree the most important advice is to choose one that is fresh. Needles should be flexible and not fall off if you run a branch through your hand. Raise the tree a few inches off the ground and drop it on the butt end. Very few needles should drop off the tree although it is normal for inner brown needles to fall. To determine freshness, perform the "pine needle" test. Pull a needle from the tree and put the two ends together, slightly pinching in the middle. If the needle breaks, the tree is too dry.

Points to consider when selecting a Christmas tree:

- Measure the height and width to ensure the tree will fit in the space you have chosen.
- Consider the variety, weight of your ornaments and fragrance.
- Do you want to choose your tree at a tree farm to be cut, or a living tree to be added to your landscape. (Remember to dig the hole before the ground freezes.) Hemlock and cedar trees dry out quickly. White pine has soft needles and is fragrant, but the needles will not support heavy decorations. Scotch and spruce will support the heavier items but are harder to decorate because of the sharp needles. The various firs and concolor have soft needles and can support heavier items. Note: the concolor has a fragrance similar to citrus.

Care of the tree:

- Cut one inch off the bottom of tree at home.
- Place immediately in a tree stand.
- Do not let the tree run out of water. If the base dries out resin will form over the cut end and the tree will not be able to absorb water and dry out. The first day or two the tree will absorb the most water.
- Be sure the tree always has plenty of water.

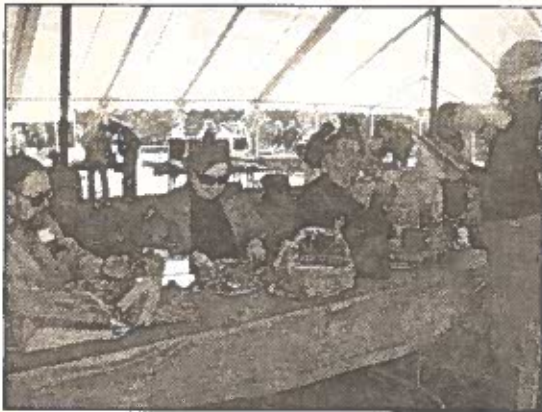
Other tips for a safe "Christmas tree" include:

- Check all the electric lights and connections.
- Never use lighted candles.
- Never place your tree near fireplaces, radiators, or other heat sources.
- Never overload outlets— this is a prime source of fires.
- Turn off all decorations when leaving the house or going to bed.



“For man, autumn is a time of harvest,

Pumpkin Fest 2007



Pumpkin Pie Judges



Panoramic View



Mr. & Mrs. Pumpkin



Pumpkins For Sale



Waiting For The Wagon



of gathering together.”

Edwin Way Teale



Autumn's Glory



A Walk In The Park



Renfrew's Pet Policy Sign

Landis Valley Trip



On The Wagon

At The Tavern



Arriving Home

The Weathervane, Page 6 Winter 2007



Spotlight on Visitors Services

The day dawned crisp and clear on Saturday, November 3rd as thirty-four friends of Renfrew gathered in the lower parking lot for our trip to Landis Valley Museum. Our bus driver from Bollman Charters and we departed promptly for our two-hour trip by 8:00a.m. Everyone was in a festive mood and ready for a fun and relaxing day learning more about our Pennsylvania –German heritage in Lancaster county.

We arrived at 10:00a.m. at the Welcome Center and were greeted by three lively “escorts” for our orientation and tour through the site. The short video informing us of the sites’ history and current operations was very interesting and prepared the group to learn more about the two Landis Brothers and their fascinating collection. We were then split into two groups and led out onto the property for our tours. My group stopped first at the old stone tavern where a wonderful gentleman (picture on page 5) met us in costume and talked about food preparation and harvest in the “bread basket of the colonies” (which is what Lancaster County, PA was called during the colonial period). Then it was on to the textile barn and learn more about flax production of the 18th and 19th centuries.

Finally after several more interpretive stops and a wonderful wagon ride with cream-colored Percherons named Bonnie (☺) and Nettie, it was time for lunch. The meal was served in the 1856 Landis Valley House Hotel and was delicious! After lunch, the group had about two hours to stroll the grounds, talk with costumed staff and of course visit the lovely gift shop. I hope everyone had as much fun on this trip as I did and learned even more about life in nineteenth-century Pennsylvania.

A quick note here to say that our new pet policy at Renfrew was officially kicked off on October 13th is going well, we have 74 dogs registered to date by their caring owners. Signs placed in the park are reminders of the Renfrew Park dog policy. The lifetime fee is \$5 per dog. The brightly colored smiley tag will be placed on your dog’s leash. We look forward to meeting your pet, so if you walk in the park and have not registered your pet, please stop by during regular winter hours (M-F 9 a.m. until 5 p.m.) in the Visitors Center and see us!

News and Notes

German Heritage Dinner

Because this time of year is so hectic for everyone, it has been decided to reschedule the date of the German Heritage Dinner.

Originally scheduled for November 9th, the new date will be announced soon! This will be a great occasion to shake those winter blues and enjoy great food and company.

We will have full details in the next Wetterhahn, so keep this special event on your list of things to do.

Survey Sheet

The Survey Sheet insert is an opportunity for you, our members, to give us your thoughts on what exhibits you would like to see in the Changing Gallery. What exhibit have you been wishing to have?

What events would you like to have at Renfrew? We have many events that happen here annually, but what would you like to see on an annual basis? What events would you like to see on a special basis?

What bus trips would you like to be part of as a group trip from Renfrew? This is a chance to tell us what museum, etc. you would like to visit with us.

We certainly welcome all responses, because we want our members to have a voice in what happens at Renfrew. Thank you for your continued support!

Renfrew House Ornament





**Recognition of Individuals and Business
Organizations for Recent Contributions to
Renfrew Museum and Park
THANK YOU!**

Loan of children's church bench-M/M Dana Gelbel
Items to the Steck/Graham Collection—Steve Graham
Painting of bridge over RT.# 16— Lynne MacBride and
Marcia Yingling-Schwuchow
Donation to the Traveling Trunk Program—Steve Graham
Sponsorship by M& T Bank for the annual Pumpkin Fest
Appreciation to Shawn Meyers-Frank Feather presentation
Appreciation to all volunteers who made our 2007 Pumpkin
Fest a success
Sponsor of the Pumpkin Fest placemats advertising for the
2007 Pumpkin Fest— Linda Barkdoll
Painting "The Big Dipper"— Brenda Kline
Thanks to all our responsible owners for registering their
"beloved" dogs in our Pet Pals Program
Contribution-Don Biesecker
Inventory and accessions-Richard Mohn & Alice McCleaf
Dedication of all board members, committee members and
volunteers who do so much at Renfrew all year, every year!
Donation of dog treats—Bones & Cones Dessertery in
Hagerstown, MD

**Renfrew New Members
2007/2008**

Life membership— Franklin County Visitors
Bureau— Janet Pollard
Individual membership— Shirley B. Brown
-Tracy Walizer
-Catherine Shivers
Donor membership— Joyce L. Horst
- Tracy E. Holliday
- Connie & Solly Hummer
Family membership—Margaret McCleary

**Renfrew Museum and Park
Docents—2007**

Bonnie Barlup	Virginia Rahn
Anna Harford	Sara Seabold
Lauren Hood (Smith)	Helen Shelley
Mia Hoover	Roy Struble
Carolyn Krouse	Louise West
Phyllis King	Peggy Wright
Eleanor (Ellie) Miller	
Anita Pfeuffer	

**Renfrew Committee, Inc.
Members-2007**

John W. Keller, President
Douglas Tengler, 2nd Vice President
David Hykes-Director
George Buckey-Director
Allison "Allie" Kohler-Director
Brenda Kline, 1st Secretary
Alice McCleaf, Assistant Secretary
Charles Strausbaugh, Treasurer

**Renfrew Executive Committee
Members-2007**

David Hykes, Chairman
George Buckey
Sue Smith, Acting Secretary
Richard "Red" Mohn
Thomas Moore
Allison "Allie" Kohler
Virginia Rahn
Charles Strausbaugh, Treasurer

**Renfrew Museum and Park
Staff-2007**

Bonnie Iseminger-Administrator
John Frantz-Supervisor of Buildings and
Grounds
Susan Smith-Supervisor of Visitor Services
Ron Harbaugh-Building and Grounds
Personnel

**Renfrew Museum and Park
Wish List-2008**

Large cooler
Lightweight wheelbarrow
Items for children's bedroom
Counter-top revolving post card stands
Road worthy pick-up truck
Pewter or wood plates for kitchen
Pre-1840 drinking glasses for kitchen
Volunteers—no experience necessary
Contact us at 717-762-4723 for any questions
or arrangements. **Thank you!**

**The Weathervane, Page 8
Winter 2007**



**Renfrew's
Gift Showcase**

Christmas is coming, and if you are searching for a unique gift do stop by our gift shop.

Available now— first in a series of hand painted wooden ornaments, Renfrew Museum house. Limited edition.

Our hours during the museum's off season are:
Monday through Friday noon until 4:00p.m.

Contributors to "der Wetterhahn"
Sue Smith-Spotlight on Visitors Services
O Christmas Tree! How are thy leaves so verdant?— John Frantz
Bonnie Iseminger—Editor
Photos- Bonnie Iseminger

**Renfrew
Upcoming Events**

Mark your calendars for these events:

**Fri. Dec-7 and Sat. Dec. 8— Christmas Open House-
Hours: 6-8p.m. each evening, and 2-4p.m. on Dec. 8th.**

2008

Wed. Feb. 13— 7 p.m. A discussion on Abraham Lincoln by Dr. Walter Powell from the Conococheague Institute.

Wed. March 19- A presentation on pottery of the Shenandoah Valley by Dr. Gene Comstock.

**der
Wetterhahn**

Renfrew Museum and Park
1010 East Main Street •Waynesboro, PA 17268
(717)762-4723 Email: renfrew@innernet.net
Website: www.renfrewmuseum.org

Non-Profit Org.
U.S. Postage
PAID
Waynesboro, PA
17268
Permit No. 405