

der Wetterhahn

The Weathervane



Volume XI11, Issue IV The Newsletter of Renfrew Museum & Park Winter 2006

A New Tradition...The German Heritage Dinner



-IN THIS ISSUE -

Feature –A New Tradition-The German Heritage Dinner **Page 1**

Contributors - Recognition of Individual and Business Contributors **Page 2**

Famous Quotes for the Christmas Season; Christmas Traditions Quiz **Page 3**

Pumpkin Fest –2006 **Pages 4 & 5**

Spotlight on Visitors Services; Renfrew's Christmas Celebration **Page 6**

Wish list; Christmas Traditions Quiz Answers; Business members, Committee and Staff members **Page 7**

Gift Showcase News and Membership Renewal **Page 8**

Traditions are usually long-standing, but they may also be introduced. Renfrew's German Heritage Dinner is in the latter category.

Celebration of our rich heritage through word and food brought memories not soon forgotten to this event!

Our keynote speaker, Ed Miller, enthralled the diners with his recollections of life on the property and how it became a museum. What a privilege to have someone so knowledgeable sharing his vast experience in such an entertaining fashion.

The dinner also presented an opportunity to honor our volunteers and some of our board members, who have given so much to Renfrew over the years.

The RCI members honored were: Judge John Keller, Ardie Winters and Doug Burkholder.

The REC members recognized were: Becky Dietrich and Willard Rahn.

Without volunteers who give so freely of their time and talents there would be a vast void to fill.

Thank you to all who give so much, we truly appreciate everyone!



**Recognition of Individuals and Business
Organizations for Recent Contributions to
Renfrew Museum and Park
THANK YOU!**

Books-Friends of Alexander Hamilton Library

Chairs for office-Sue Smith

Bone grinder, wooden lathe and Myers pump-
G. Barr Newcomer

Pumpkin pie contest judge and German Heritage
Dinner Committee member- Richard Mohn

Pumpkin pie contest judge-Cheryl Bomar

Pumpkin pie contest judge -Mike Mahr

Running pumpkin pie contest-Charlene Good

German Heritage Dinner committee member-
and Chair for the Refreshment Committee at
Renfrew's Christmas celebration -Alice McCleaf

Decorations for Christmas event- Anita Pfeuffer

Decorating Museum house for Christmas event-
Blue Ridge Summit Garden Club
Toll Gate Garden Club
Maggie Cizar
Judy Bricker

Chair of Museum decorating-Virginia Rahn

Hand Bell Choir from Church of the Brethern
Waynesboro-Charlene Good Director

Children's Hand Bell Choir from Rouzerville
United Methodist Church- Ram Rowland
Director

Decorations for German Heritage Dinner- Diane
Hykes

Contribution to Renfrew-Judge John Keller

**Recognition of Individuals and Business
Organizations for Recent Contributions to
Renfrew Museum and Park
THANK YOU!**

CD with photos of Christmas Past -Bruce Francis

CD with photos of Pumpkin Fest-2006-Gene
Cooley

A John Bell crock - Emily Franz Clarke and Julia
Franz Brown given in memory of:
Fay Neady and Archie Edwin Barkdoll
By their daughter: Charlotte Barkdoll Franz

Master story teller at the Renfrew Christmas
Celebration-John Shindledecker

Helping with the Luminaries for the Renfrew
Christmas celebration-Krista Serpi and Girl
Scout Troop

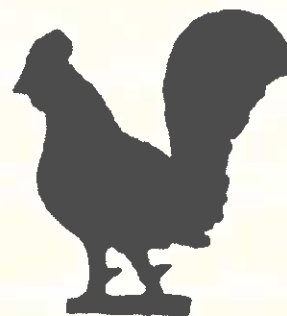
Beverages for The German Heritage Dinner-
Steve Minnich

Decorating for German Heritage Dinner-Wendy
Mohn

Assisting with Renfrew Christmas program-
Renfrew Museum Docents

Friends of Renfrew - Baking for Christmas
Celebration at Renfrew

The generosity of the Volunteers at Renfrew
who enrich all programs and events





Famous Quotes for the Christmas Season

"Somchow, not only for Christmas but all the long year through, the joy that you give to others is the joy that comes back to you. And the more you spend in blessing the poor and lonely and sad, the more of your heart's possessing returns to you glad". *John Greenleaf Whittier*

"Christmas is the season for kindling the fire of hospitality in the hall, the genial flame of charity in the heart". *Washington Irving*

"When Christmas bells are swinging above the fields of snow, we hear sweet voices ringing from lands of long ago, and etched on vacant places are half-forgotten faces of friends we used to cherish, and loves we used to know".

Ellen Wheeler Wilcox

"One of the nice things about Christmas is that you can make people forget the past with a present". - *Anonymous*

"Christmas is the day that holds all time Together". - *Alexander Smith*

"Christmas children, is not a date. It is a state of mind". - *Mary Ellen Chase*

"I heard the bells on Christmas Day; their old familiar carols play, and wild and sweet the words repeat of peace on earth, good-will to men". - *Henry Wadsworth Longfellow*

"Yes, Virginia, there is a Santa Claus-
Francis P. Church

"I will honor Christmas in my heart, and try to keep it all year". - *Charles Dickens*

"A merry Christmas to everybody! A happy New Year to all the world". - *Charles Dickens*

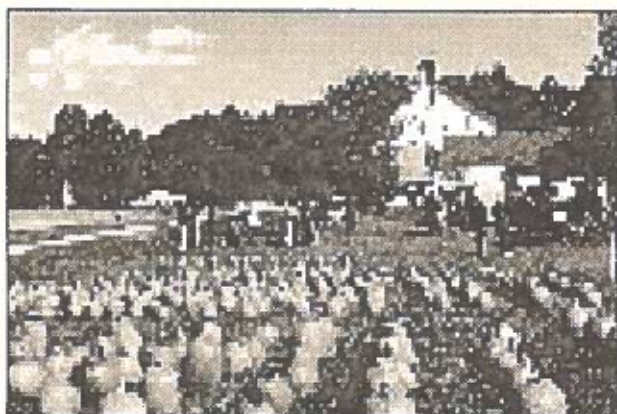
Christmas Traditions Trivia

Test your Pennsylvania Christmas Trivia knowledge! Answers can be found on page 7. Good luck!

1. Who was the first person credited with putting candles on the tree?
2. Why do candles appear in windows all-year long?
3. The Moravian Star has how many points?
4. Where did the Moravian Star originate?
5. What is celebrated on December 6th?
6. What figure appears in Pennsylvania German traditions wearing a hat, wig and long, heavy coat?
7. What does the Beltznickel do?
8. What do the children have to do for Beltznickel?
9. In what year did Clement C. Moore's verse for "A Visit from St. Nicholas" first appear?
10. What is the first reference to a Christmas tree in America?
11. Where is the only place in America where you will find a 110-point Moravian Star?
12. Why were the early Christmas trees hung from the ceiling?
13. How did children earn money to buy Christmas goodies?
14. What item did the Pennsylvania German housewife produce in vast amounts for the Christmas celebration?
15. "Ein frehlicher Grischtagg un ein hallich Nei Yaar!



Pumpkin

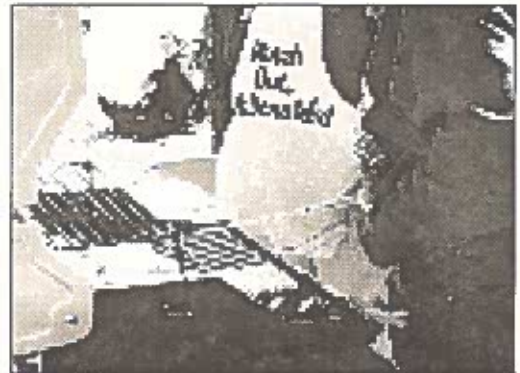


The day may have been windy with a definite chill in the air, but it did not deter many families from enjoying the annual Pumpkin Fest at Renfrew. The warm soup, cider and happy faces gave this event a warmth the weatherman could not diminish.





FEST



All photos for Pumpkin Fest
Courtesy of Gene Cooley



**Spotlight on Visitors Services
With
Sue Smith**

Renfrew Museum currently has a very dedicated but small group of volunteers who teach our visitors about the history of this wonderful Pennsylvania German farmstead. They lead tours through the 1812 Royer House and discuss what life was like here during that time. They also examine with our visitors the very fine collection of decorative arts that is on display in the home. Our volunteers also assist with school groups and lend a hand at our special events such as the Pumpkin Festival and Christmas Celebration.

We really want to grow our volunteer staff due to an increased need for their assistance. Volunteers need to feel they are making a difference in their communities and at Renfrew, they are. What could be more important than teaching others about our past? The commitment of their time to an organization requires that it be recognized is incredibly valuable and at Renfrew it is.

We recognize our volunteers in numerous ways. They receive a 10% discount at the Gift Shop, a complimentary ticket to our annual dinner and we are also reviving for 2007, the past practice of taking our volunteers on a day trip to another museum. We hope these small gestures will let our volunteers know how much we depend on them for the continuation of all that we do here at Renfrew Museum and Park.

So, if you or someone you know has 4 hours of time or more per month that can be donated to Renfrew please give me a call at 717-762-4723. I think you'll find it to be time wisely spent!

**Renfrew's Christmas
Celebration**

Just as everyone anticipates the holiday, Renfrew's Christmas celebration is a true harbinger of the things of the season!

For two evenings December 1st and 2nd Renfrew Museum will be transformed into a vision of Christmas past. From 6-8pm each evening there will be so much to enjoy at this holiday event.

Under the direction of Virginia Rahn, members of the Blue Ridge Summit and Toll Gate Garden clubs will have the museum house aglow with candlelight and natural decorations that bring the true beauty of the season. Also participating in the decorations will be Judy Bricker and Maggie Cizar. Don't miss the scherenschnitte tree in the Changing Galley decorated by Anita Pfeuffer.

Music will fill the air in the museum house with the beautiful sounds of the season by Dan Mack and Tom Jolin.

In the Visitors Center on Friday evening will be Pam Rowland's Children's Hand Bell Choir from Rouzerville United Methodist Church-from 6-6:20pm.

On Saturday evening the Church of the Brethern Hand Bell Choir under the direction of Charlene Good will entertain from 6-7pm.

On Friday evening from 6:30-7pm and 7:35 -8 pm and Saturday evening from 7-7:25 and again from 7:35-8pm will be the master storytelling John Shindledecker delighting children of all ages with his stories.

Cookies and mulled cider will be served both evenings thanks to Alice McCleaf and some "friends" of Renfrew.

'Tis the season for this annual event, which Renfrew's gift to the community. Thank you to all who are so supportive!



RENFREW'S WISH LIST

Listed below are a few of the items that would enhance our programs and facilities. Remember all contributions to Renfrew Museum and Park are tax deductible, as allowed by law. If you need assistance with a pick up of items we will be happy to arrange a time. Thank you for your continued support.

Wheel barrow
Small farm equipment
Counter top revolving post card stand
Books on Pennsylvania German life and holidays
Antique table linens
Card tables

CHRISTMAS TRIVIA ANSWERS

1. Martin Luther first to put candles on tree.
2. Candles in window are a welcome sign.
3. The Moravian Star has 26 points.
4. The star was designed in Niesky, Germany.
5. December 6 is St. Nicholas Day.
6. The figure was the Beltznickel.
7. The Beltznickel gave "goodies" to the good children and carried a switch to "punish" naughty children.
8. The children would perform a song or poem.
9. The poem first appeared in 1822.
10. The first reference to a Christmas tree was in 1821 from a Diary of Matthew Zahm from Lancaster.
11. The 110-point star is in the Moravian Church in Lititz.
12. Trees were hung from the ceiling because of floor space and protection from rodents.
13. Children cleaned and sold hog bristles (hairs) to brush makers.
14. The housewives baked vast amounts of cookies for the holidays.
15. Merry Christmas and Happy New Year.

Sources: Amish news; Landis Valley Cookbook, Landis Valley Museum in Lancaster, PA.

Renfrew Business Members 2006

Bonded Applicators - Executive Member
Wayne Heights Animal Hosp. - Executive Member
Johnson Controls - Standard Member
Savage Family Pharmacy - Standard Member
Dr. Melissa March - Beginning Member
Timothy Misner, Attorney - Beginning Member
Kipe-Ramey Insurance Agency - Beginning Member

Renfrew Committee, Inc. Members-2006

John W. Keller, President
Delmos Oldham, 1st Vice President
Douglas Tengler, 2nd Vice President
David Hykes
George Buckey
Brenda Kline, 1st Secretary
Alice McCleaf, Assistant Secretary
Douglas Burkholder, Treasurer

Renfrew Executive Committee Members-2006

David Hykes, Chairman
George Buckey
Becky Dietrich, Secretary
Richard "Red" Mohn
Thomas Moore
Delmos Oldham
Willard Rahn
Douglas Burkholder, Treasurer

Renfrew Museum and Park Staff Members -2006

Bonnie Iseminger - Administrator
Sue Smith-Supervisor of Visitor Services
John Frantz - Supervisor of Buildings and Grounds
Ron Harbaugh - Building and Grounds personnel



RENFREW'S GIFT SHOWCASE

Time is passing quickly to the Christmas season. Never too soon to start shopping.

We have many items to choose from for that perfect gift.

Gift Showcase hours will continue through winter. The hours (after October 31) will be Monday-Friday from 11:00 am-4:00 pm.

We will also be open during Renfrew's Christmas celebration December 1 and 2 from 6 until 8p.m. Do stop by!

Contributors to "der Wetterhahn"
Sue Smith-Spotlight on Visitors Services
Bonnie Iseminger—Editor

der Wetterhahn

Renfrew Museum and Park
1010 East Main Street • Waynesboro, PA 17268
(717)762-4723 Email: renfrew@innernet.net
Website: www.renfrewmuseum.org

RETURN SERVICE REQUESTED

Renfrew Membership Renewal

It is hard to believe another year is almost at an end. Time to think about renewing your membership at Renfrew.

Membership is on a yearly calendar basis. Letters will be sent out shortly.

To all who have supported us in the past year we say a very sincere, "thank you". Hopefully, you will be able to renew your membership for 2007.

May you have great health and happiness in the New Year!

