

der

The Weathervane

Wetterhahn



Volume XIII, Issue III

The Newsletter of Renfrew Museum & Park

Summer 2002

NEW END OF THE SUMMER EVENT SCHEDULED!

"Festival of the Arts at Renfrew & 23rd annual Arts and Crafts Market" set for Saturday, September 7th

Renfrew is pleased to announce plans for a new event, entitled "The Festival of the Arts at Renfrew and 23rd annual Arts and Crafts Market - A Celebration of the Arts, Crafts, History & Culture of the Cumberland Valley." The program is scheduled for Saturday, September 7th from 9am to 4pm.

The Festival is a collaborative effort between Renfrew Museum and the Cumberland Valley Guild of Craftsmen. The Guild has held its annual Arts and Crafts Market at Renfrew for 22 consecutive years. In combining our resources we hope to build on an already established, successful program, and develop it into a

larger, end-of-the-summer festival for the general public.

Life in the Cumberland Valley is filled with a wide variety of cultural and artistic opportunities. All around us, people and organizations are involved in activities that are both educational and entertaining. This year, for the first time, Renfrew Museum will gather people together to celebrate this richness with the *Festival of the Arts at Renfrew*.

The Festival is designed to show the artistic and cultural diversity of the Cumberland Valley. There will be two distinct sections to the event. The Guild's annual Arts and Crafts Market will continue as usual, showcasing some of the best artisans in our area. The "Festival" will include individuals and non-profit organizations that are involved in music, arts, history and the like. An open invitation goes out to all local museums, historical societies, quilt and garden clubs, re-enactors, musicians, artists, dancers and historical demonstrators.

Please help us spread the word by distributing the enclosed application form to anyone you think might benefit from participation. There is no charge for non-profit groups and individuals who are not involved in a commercial activity. If you know of a commercial crafts person who wants to join us, have them get in touch with the Guild's Arts & Crafts Market Director, Richard Adkins, at 765- 8695.

Thanks for your help! We'll look for you on Saturday, September 7th for what promises to be an exciting event.

(Right) Renfrew's grounds come to life during a past event. Look for an outstanding display of crafts, exhibits and demonstrations on September 7th.



- IN THIS ISSUE -

Feature - "The Festival of the Arts at Renfrew and 23rd annual Arts & Crafts Market" is set for Saturday, September 7th. More on - **Page 1**

PA Conservation Corps Update - The PCC completes its 2001-2002 project at Renfrew. Find out what was accomplished on - **Page 2**

In The Spotlight - Volunteer Appreciation Trip set, MAP 1 Surveyor's visit takes place, Eagle Scout Project recognized. - **Page 3**

New Donations - Renfrew adds some unique woodworking tools to its collection - **Page 4**

Renfrew's Wishlist - We are looking for a variety of items and we need new vols.! - **Page 4**

Renfrew Tidbits - Our next exhibition is announced & special Renfrew projects - **Page 5**

Membership Application - Use it for your renewal or pass it on to a friend - **Page 5**

Schedule of Events - and the return of the Renfrew "Monster Maze" - **Page 6**



PA Conservation Corps
- Update -

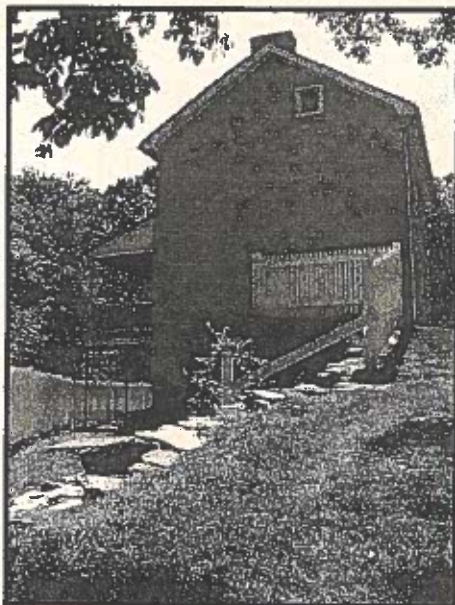
Renfrew has had a real roller-coaster ride with its Pennsylvania Conservation Corps grant for 2001-2002. After losing our crew leader prior to his first day on the job, we endured a four month wait until the PCC hired Paul Snyder who came on site in November of last year.

Paul did a good job recruiting a crew and had a busy winter and fall; he worked with us to prioritize the projects on our grant application with the end goal of completing as much as possible within the remaining six months of our 2001-2002 grant cycle. We hoped to continue our PCC project through next year and submitted our 2002-2003 application in January of this year.

Unfortunately, we a couple of months ago that our new application was not approved. Apparently there were many new applications to host PCC work crews. The applications were rated on a point system with the top four in our region receiving an award. From what we've been told, our application was ranked number five.

As a result, our grant came to an end on June 30th. Our crew leader, Paul Snyder, was retained by the PCC and has moved on to Greencastle where he will head the crew working at the Tayamentasachata Center for Environmental Studies. We were just beginning to get into the heart of our project, and, naturally, are very disappointed to see things come to a halt.

The Renfrew staff held a going away party for Paul during the last week of June. While we are discouraged that he and his crew have left Renfrew, we can take pride in the quality work that they accomplished.



Despite being on site at Renfrew for just seven months of the year, Paul and his PCC crew were able accomplish a great deal of work.

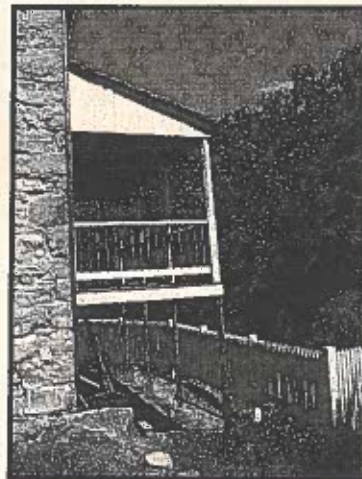
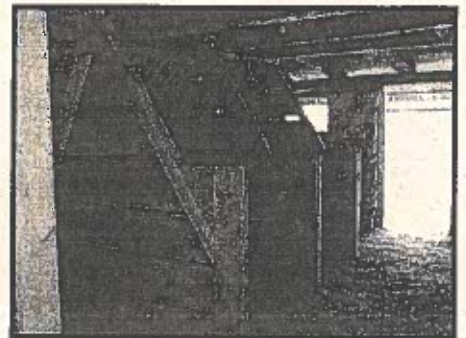
Many projects were completed at the Fahnestock House, including the reconstruction of the back porch.

PA Conservation Corps
- Update -

In the last issue of *der Wetterhahn* we focused on several of the PCC's projects. Below you will find photographs highlighting some of their recent accomplishments. Please make a point of checking out their work the next time you are at Renfrew.

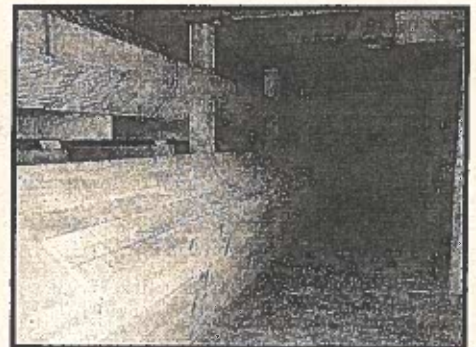
Right now we are planning to submit an application to bring the PCC back in 2003-2004. Overall, hosting a PCC crew has proven to be a good thing for Renfrew and the young people who were employed here. We will keep you posted on our progress.

(Right) Newly constructed horse stalls at the Fahnestock Barn. The barn was fully restored in the late 1980s, but the animal enclosures were not completed at that time.



(Left) The porch at the Fahnestock House received major renovations thanks to the PCC. The deck was shortened so it would fit under the existing roof for better water drainage. New deck flooring was also installed and painted. In addition, the crew replaced the porch posts and picket railings with turnings done for us by Hicksville Planing Mill in Cearfoss, Maryland.

(Right) Feed boxes, installed at the Fahnestock Barn as part of the PCC's ongoing project. The boxes are complete less their reproduction hardware.





Summer 2002

☆ In The Spotlight ☆
Volunteer Appreciation Trip Set

Renfrew's annual volunteer appreciation trip is set for Wednesday, August 14th. This year, we are traveling to Winterthur Museum in Wilmington, Delaware.

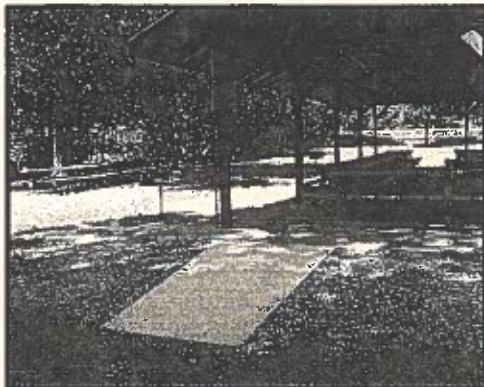
The purpose of the trip is to recognize Renfrew's tour guides and other volunteers who have contributed time to the Museum and Park over the year.



(Left) Winterthur was the home of Henry Francis du Pont, an avid antiques collector and horticulturist. The estate was designed in the spirit of 18th and 19th century European country homes. It now serves as a multi-faceted public museum housing an exquisite collection of buildings, antiques and gardens.

Our staff and volunteers will be traveling by chartered coach from Waynesboro to Wilmington. While at Winterthur we will tour the galleries and participate in the "Gracious Living Tour." We will also see the special exhibition, "Myer Myers, Jewish Silversmith in Colonial New York." Winterthur is a world-renown museum with more to offer than a visitor can possibly see in a single day. Several hours in the afternoon will be left open so members of our group can pick the areas they are most interested in visiting.

This annual trip is Renfrew's way of saying thanks to the special people who help us do our job better! If you know of someone who might be interested in volunteering at the Museum and Park, please let us know. We will be glad to talk with them about the various volunteer opportunities that exist at Renfrew.



(Left) New handi-cap access ramp at Renfrew's picnic pavilion. The ramp was built by Billy Hofmann of Troop 97 as part of his Eagle Scout service project.

- Eagle Scout Project Noted -
Map 1 Survey Takes Place

Visitors to the park will notice some major improvements completed this spring and summer by **Billy Hofmann** as his Eagle Scout service project.

Billy, a member of Waynesboro's Troop 97, completed two projects to help us in the park. The photograph below

(Right) Billy Hofmann stands in front of the information stand he refurbished as part of his Eagle Scout service project. Billy and his crew worked hard to complete this project; they also did repairs after a corner was damaged by a tree that fell in the park. The stand will feature information on Renfrew's policies.



shows Billy standing next to his project. He also worked to build a handicap access ramp for the pavilion. Thank you, Billy, for choosing Renfrew for your Eagle Scout project. We appreciate your help!

MAP 1 VISIT TAKES PLACE

In past issues of *der Wetterhahn* we told you about Renfrew's participation in the American Association of Museum's, Museum Assessment Program (MAP 1). This grant-funded program brings an outside museum professional to Renfrew to study our site and its operation. The end result is a written report that we can use for self-improvement.

On Monday, July 1st, we hosted our surveyor, **Hank Lynch**, President and CEO of Stan Hywet Hall and Gardens in Akron, Ohio. Mr. Lynch has spent over 20 years in the museum field. We chose him to do our survey because he has experience as the chief executive officer at several different sites that emphasized gardens and grounds, much like Renfrew does with its farmstead and public park. We hope that Hank's experience will prove useful for us as we develop our long range plans.

Mr. Lynch spent the entire day meeting with the staff and members of Renfrew's Board of Directors. He began at 8:00am and left Renfrew around 4:30pm.

We expect to receive a final report from Mr. Lynch within the next few months. We will print the highlights of this report in a future edition of the newsletter; we will also tell you about any subsequent changes we might make as a result of our surveyor's recommendations.



Museum Donations New Artifacts for the Collection

Renfrew recently received a donation of 19th century tools and a reproduction spring-pole lathe from Waynesboro resident, **Pat Ryan**. Mr. Ryan is a carver and woodworker who does demonstrations at historical events, including participation in our former Spring Fest programs. He is set to retire from his full-time job and wanted to donate these items to Renfrew to help us with our period interpretation.



Spring pole lathe donated by Pat Ryan. This device was hand-made by the donor. It is based on a design from the 1760s and is authentic in most of its details. Mr. Ryan would disassemble the lathe and take it with him when he did woodworking demonstrations.

(Right) Assortment of 19th century hand-tools donated to Renfrew by Pat Ryan.

We appreciate Mr. Ryan's thoughtful contribution and wish him well in his retirement.



- THANK YOU -

A special Renfrew thank you goes out to **Glovelia Williams** of Madison Avenue, Waynesboro, for responding to our request for hand-tools.

Ms. Williams called the Museum and offered us an assortment of items that were used by her father. The collection was picked up by Museum Curator, Jeff Bliemeister, and delivered to John Frantz, Supervisor of Buildings and Grounds. The new items make excellent additions to our inventory. Thank you, Glovelia, for thinking of Renfrew!

Renfrew Wishlist Tour Guides Still Needed for 2002!

The Renfrew Wishlist has become an ongoing feature of the newsletter. Please take a look at our list of needs to see if there is anything you can help us with. Your contribution may be tax-deductible and we can make arrangements to pick-up large items.

CURRENT WISHLIST

Table Saw (electric) to use for woodworking/restoration.

Hand Tools - wrenches, screwdrivers, wood-working tools, electric skill saw, etc - new or used.

Metal Folding Chairs for use in the Visitor's Center.

Card Tables, folding style for parties & special events.

Volunteer Tour Guides (no experience required - we will train!). Volunteers to help with our gardens are also needed.

Members (Friends of Renfrew Museum and Park) Spread the word by asking your friends and neighbors to join!

Toys from 1945 to 1975 to borrow for our upcoming exhibition, "I Had That! - Postwar American Toys." We need toys to exhibit from the beginning of August to the end of October. All loans to Renfrew will be under glass and protected by our insurance.

TOUR GUIDES NEEDED

Renfrew Museum has an ongoing need for volunteers to serve as tour guides. This is a great opportunity to spend time in an historical setting while meeting interesting people from all over the world.

Guides at Renfrew give tours seasonally on Thursdays, Saturdays and Sundays from the hours of 1:00pm to 3:30pm. Our current guide staff features men and women of varying ages and backgrounds. No prior experience is required. All you need is enthusiasm and an interest in history. Renfrew will provide you with training and all the background information you need.

Each year our guide staff takes a special trip. Last August, we visited Jefferson's Monticello in Charlottesville, Virginia for a behind the scenes tour of the house. This year we are going to Winterthur Museum in Wilmington, Delaware.

If you are interested in joining our staff as a volunteer guide, please contact **Tammy Wetzel**, Renfrew's Supervisor of Visitors' Services at 762-4723. Tammy recently updated our tour guide manual and is busy working with our new recruits. We still need more guides, so please consider giving us a call!



Summer 2002

**Upcoming Exhibition
Your Help Is Still Needed!**

Our second exhibition of the year is entitled: *"I Had That! - Post War American Toys."* The idea of the display is to gather together a wide variety of toys that will make our visitors stop and think, "I remember playing with that when I was a kid!"

Unfortunately, Renfrew does not have very many toys that meet the exhibition's criteria. We are turning to our Friends of Renfrew for help. Several of you responded to our first request, but we still need more toys!

If you have toys that were made in America between 1945 and 1975 that you are willing to let us borrow for this exhibition, we would be most appreciative. "We are looking for all types of toys, including things such as play sets, action figures, and kitchen items, to name only a few. We want to illustrate the variety of mass-produced items made by the big companies such as *Marx, Hasbro* and *Mattel*" states Museum Curator, Jeffrey Bliemeister. Please think of Renfrew while you're doing your spring and summer cleaning; take a look in your attic or basement for your old family play toys.

The exhibition is scheduled to open in early August and run through the end of October. All loans to the museum will receive the same care as our accessioned artifacts. They will be placed under plexi-glass (if size allows) while on display and covered under our insurance policy while at the Museum. If you can help us out, please call either Jeff or Tammy at 717-762-4723.

**Renfrew Tidbits
Special Projects - More Spring Cleaning**

Renfrew staff and volunteers have had a busy spring and early summer cleaning out several of our outbuildings. Led by **Tammy Wetzel**, a dedicated group of workers

Renfrew Executive Committee chairperson, David Hykes, and museum volunteer, Red Mohn, receive a box from Tammy Wetzel, Supervisor of Visitors' Services. This crew cleaned out the second floor of the hog pen in June/July.



cleaned-out the Hog Pen, Corn-Cribs and Chicken Coop. These areas contained a wide variety of objects, dating back to the Nicodemus ownership of the property and earlier. The work crew cleaned the spaces and sorted everything they found. They ended up throwing away a great deal of trash, but they did find some interesting artifacts that are now part of our permanent collection.



(Left to right) Renfrew staff members Ron Harbaugh and John Frantz work with Red Mohn and David Hykes sorting items removed from the barn's corn crib. This area was completely cleaned and organized this past June.

Renfrew Museum and Park

1010 East Main Street, Waynesboro PA 17268 (717) 762-4723

FRIENDS OF RENFREW - Application for Annual Membership

Name _____

Address _____

City/Town _____

State and Zip Code _____

Optional Information:

Telephone Number _____

Email Address _____

Membership Categories

Life \$1,000

Bell Society \$250* _____

Curator's Associates \$200* _____

Sustaining \$125 _____

Family \$50 _____

Donor \$25 _____

Individual \$15 _____

Student (ages 6-15) \$5 _____

Endowment Fund: _____

Please send me information on volunteer opportunities at Renfrew: _____

(Endowment Fund Donations help to build Renfrew's future. They are invested for long-term growth, not incorporated into our operating budget). *Bell Society and Curator's Associates are categories with unique benefits and characteristics. Please call for more information.



Summer 2002

- SCHEDULE OF EVENTS -

Civil War Encampment, August 9th -11th. Join the 139th Regiment of PA Volunteers for their annual Renfrew encampment. This year's feature event is Gettysburg's Battle of Forney's Field on Saturday.

Festival of the Arts at Renfrew and 23rd annual Arts & Crafts Market, Saturday, September 7th, 9am to 4pm.

Jazz Festival (Renfrew Institute), Sunday, August 25th, 2 to 4pm.

Pumpkin Festival, Saturday, October 19th, 11am to 4pm. Join us for this annual fall festival.

Antique Appraisal Day, Saturday, November 2nd, 10am to 4pm. Find out what your treasures are worth on today's market!

Christmas Open House, Sunday, December 8th, 12 noon to 8pm. (please take note of the new date!).

Native American Lecture Series - Thursdays in the fall, featuring speakers from the PA Humanities Council.

Renfrew's four-acre corn maze is set to open on the weekend of September 7th. The corn is in good shape and growing strong! Note the cut-out opening to the right of center and, barely visible in the background, is the Fahnestock Barn.



The Monster Maze is Back!

We are happy to report that Renfrew's giant maze will return for another year, thanks to the efforts of **Dr. Garrett Blanchett** and many volunteers. The maze will open on Saturday, September 7th as part of our new Festival of the Arts at Renfrew and continue weekends through the middle of October. We have also set aside two evenings for a night maze! Non-profit groups (churches, scouts, sports, etc.) are needed to help staff the maze during the weekends. This is a chance to help Renfrew and make money for your organization! For more information, please call the Museum at 762-4723.

RENFREW'S PICNIC PAVILION IS AVAILABLE FOR RENTAL!

der
Wetterhahn

Renfrew Museum and Park
1010 East Main St. Waynesboro, PA 17268
(717) 762-4723 E-mail: renfrew@innernet.net
Web site: www.renfrewmuseum.com

RETURN SERVICE REQUESTED



Printed on Recycled Paper