



PUMPKIN FESTIVAL PLANNED FOR OCTOBER 20th

Antique Appraisal Day, Gingerbread House Contest and Holiday Open House Highlight Renfrew's Busy Fall and Winter Schedule

Renfrew's annual **Pumpkin Festival** is set for Saturday, October 20th from 11am to 4pm. This popular annual event, co-sponsored by Renfrew Museum and the Renfrew Institute for Environmental and Cultural Studies, is now in its 8th year.

The Pumpkin Festival at Renfrew is the perfect place to have fun celebrating the delights of fall. This year we have a full and exciting schedule on tap for our guests.

Renfrew's trebuchet or "pumpkin catapult" sits partially assembled in the field behind the Museum. This machine will delight visitors of all ages on October 20th!



- IN THIS ISSUE -

Feature - The Pumpkin Festival is set for October 20th. Find out more on - **Page 1**

Letter From The Curator - A message to the membership. **Page 2**

Calendar of Events - Antique Appraisal Day and the Yuletide Open House highlight the upcoming schedule. The details are on - **Page 3**

In The Spotlight - Volunteers make things happen at Renfrew! Our staff visits Jefferson's Monticello and we thank two of our most dedicated helpers. **Page 4**

New Program Review - The "Renfrew Monster Maze" was a great success in September! **Page 5**

New Donations & Museum Wishlist - Renfrew adds two Robert Morrow paintings to its collection, and our ongoing wishlist. **Page 5**

Membership Application - Use it for your renewal or pass it on to a friend. **Page 5**

Renfrew Tidbits - A PCC Grant Update and there's still time to join the Bell Society. The details are on - **Page 6**

Some of the highlights for this year include:

BABY FARM ANIMALS TO PET
HAYRIDES LIVE MUSIC BY "FAST TRAIN"
FREE SOUPS & BREADS PUMPKIN' CHUNKIN'
FOUR -ACRE 'MONSTER CORN MAZE'
PUMPKIN SALES & DELIVERY TO PARKING LOT
FACE PAINTING & CHILDREN'S ACTIVITIES

The cost for admission is: \$5.00 for adults and \$3.00 for children ages 4 to 12. The event is free to those under 4. Admission to the Festival includes most of the attractions

listed above. There is an additional charge for pumpkins to take home or launch from the catapult. Hot dogs, sodas and event T-shirts will also be available for purchase. For more information please contact the Museum (762-4723) or Institute (762-0373).

(Right) Hundreds of Renfrew-grown pumpkins are waiting for the October 20th festival.





Fall 2001

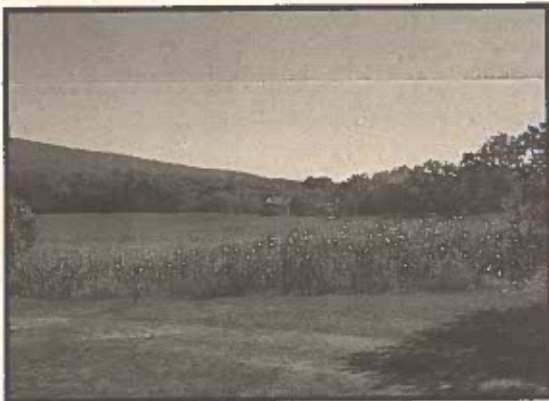
Letter To The Membership

- A Message From The Curator -

Dear Friends of Renfrew:

Fall is truly a beautiful season. I am reminded of that fact daily when I enter Renfrew Park for work. In fact, visitors seem to take notice of the natural beauty of Renfrew throughout the seasons and often tell me that I have the privilege of working in what they believe to be an idealic setting. Most days, and particularly in the fall, I agree with their assessment.

Renfrew Museum ends its official tour season the last weekend of October. However, if you visit the grounds or talk with the staff during this time of year, you would not know the season is just about over. School children are everywhere these days, attending Institute programs, and we still have the Pumpkin Festival, Antique Appraisal Day, and the Yuletide Open House on the list of upcoming events.



The beginning of fall at Renfrew, as seen from just below the cemetery, looking over the four-acre corn maze.

Fall is, in fact, the busiest time of year at Renfrew. With the majority of our big programs falling in October and early November, it is also the time when we really get to see the Friends of Renfrew and make new "Friends" of the first-time visitors who attend our events. Even after 25 years of service to the Waynesboro community, there are still local people and new arrivals who do not know about what Renfrew has to offer and have yet to visit the site. Right now is a great time to share Renfrew Museum and Park with someone you know.

If you receive the *der Wetterhahn* through the mail, it is because you have already made some kind of an investment in Renfrew. You may be a dues paying Friend or perhaps you are a volunteer or business associate. No matter what your connection, you believe in the value of this public institution and support our preservation and

Letter To The Membership

- continued -

education efforts. We appreciate your financial contributions and the many different talents you share.

Last year we celebrated the 25th Anniversary of Renfrew Museum and Park. In a mere quarter of a century, Renfrew has gone from a beautiful private residence to a restored Pennsylvania German farmstead attracting upwards of ten thousand visitors annually. This development is the result of ongoing efforts by many dedicated people. Because of this progress, Renfrew is a vital part of our community with something to offer everyone.

Positive change is in the air. Renfrew is working on a long range plan that will guide us in expanding the site and its services. We are taking a serious look at what we do and why we do it. We have tremendous resources available to us and it is our job to find the best ways to put them to work for our community and its visitors.

Over the next few years, we will be examining our interpretation and programming at Renfrew. Our rich collections and 107-acres offer limitless possibilities. During 2002 we will participate in something called the Museum Assessment Program or MAP 1 for short. This federally funded grant brings an outside museum professional to Renfrew to review our operation. The MAP 1 surveyor looks at our entire operation, interviews members of the staff, board of directors and community at large, then writes a comprehensive report on how we can improve our institution. This document will help us set Renfrew's course for the next quarter of a century!

Right now, I wish to thank you for your support. Over this past year, we have added many new Friends of Renfrew. We have also had several people join us as museum interpreters or to help with our ongoing collections inventory project. You are our best ambassador in the community, so thanks for helping to spread the word. Renfrew is a fun and exciting place with something to offer everyone. Soon, you will receive a personal invitation to join the **Bell Society**, our exclusive, two year membership program that includes a limited-edition reproduction pottery piece. I hope you will consider joining me and many of our directors by becoming a member of this group.

Please make a point of visiting this fall to rediscover Renfrew. You will be glad you did. I look forward to seeing you at the Museum or in the Park!

Jeffrey Bliemeister

Jeffrey Bliemeister
Museum Curator



Fall 2001

Calendar of Events Fall & Winter 2001

Last year, Renfrew Museum and Institute combined efforts to produce a very successful speaker's series on Pennsylvania-German Culture. The programs were sponsored by the Pennsylvania Humanities Council. We brought the series back this year with three more programs. The first two speakers visited Renfrew in August and September. Those who attended were treated to two excellent programs. There is one speaker left on the calendar for 2001. The program takes place in the Visitor's Center. It begins at 7:00 pm and is free of charge and open to all. No reservations are required.

PA HUMANITIES SPEAKERS SERIES

October 18th: *David Valuska, Ph.D., "The Pennsylvania Dutch: 17th Century to Today."* Dr. Valuska will discuss the immigration years from 1683 to 1808, tracing the patterns of groups coming from Germany, France, Switzerland and Austria. He will also examine the theological differences among the various German religious sects.

PUMPKIN FESTIVAL

October 20th: Renfrew's 8th annual **Pumpkin Festival**. Bring your family and friends to Renfrew and celebrate fall in grand style! The program runs from 11 am to 4 pm and admission is charged. Conditions permitting, the event will feature the four-acre Renfrew "Monster Corn Maze" the popular attraction that ran during weekends in September. See the front page for more details.



TRASH OR TREASURE? *find out at...* ANTIQUÉ APPRAISAL DAY

On Saturday, November 3rd from 10:00 am to 4:00 pm, Renfrew will host its annual **Antique Appraisal Day** program. Similar in style to the popular *Antiques Roadshow* on television, this event is the perfect opportunity for you do find out more about the different antiques or collectibles in your personal collection.

"We have a full staff of experienced appraisers returning from the last two programs," states Museum Curator, Jeffrey Bliemeister. "This year, we have also added new personnel to help us with certain areas such as costume

Calendar of Events - continued -

jewelry and dolls. Our appraisers are friendly, knowledgeable and very committed to giving our visitors the most accurate and thorough appraisal possible."

Your objects will be evaluated by a panel of select professionals chosen from the ranks of antique dealers, appraisers, auctioneers and private collectors. For 2001, our staff features the following appraisers:

Suzanne Daly

Conservator of Dolls & Doll Clothing, Chambersburg, PA

Matt Hurley

Matthew S. Hurley Auction Company, Waynesboro, PA

Phyllis Potter

Antique Crossroads, Hagerstown, MD

Clarke Hess

Authority on PA German Antiquities, Lititz, PA

Budd Moore

Educator and Authority, American Pottery & Glass, Waynesboro

Alesia Permansu

Alesia Permansu Antiques, Greencastle, PA

Carl Ocker

Kenny's Auction, Chambersburg, PA

John Hykes

Hykes Antiques, Waynesboro & Shippensburg, PA

Emma Lohman

Green Castle Antique Mall, Greencastle, PA

G. Craig Caba

G. Craig Caba Antiques & Auctions, Enola, PA

The cost for appraisals are \$3.00 for a verbal evaluation and \$5.00 for a written certificate, per object. In the interest of fairness, each person will be limited to two items per appraisal session. You may register for additional appraisals after completing your first session.

If you want to attend Antique Appraisal Day, but are concerned about waiting in long lines, there is no need to worry. Renfrew will have a well seasoned group of volunteers and museum staff members present to handle registrations. We have worked really hard to streamline the process and get you to the appropriate appraiser with minimum delays. And, just like last year, we will have ongoing appraisals of interesting objects broadcast for your viewing through a camcorder and two televisions installed in the visitor's center waiting area.

All proceeds from Antique Appraisal Day benefit Renfrew Museum and Park. Our appraisers have graciously donated their services for this event. The area's first annual appraisal program is still the best place to learn about your antiques and collectibles! We hope to see you on November third.



Fall 2001

Calendar of Events Upcoming Yuletide Events

Renfrew's annual Holiday Open House is set for Sunday, December 2nd, from 1:00 pm to 8:00 pm. Plans are currently underway for a special, old-fashioned Christmas with a patriotic theme. Please note the change in our format. We will be open only on Sunday but our hours cover most of the day.

Right now our program is still in the planning stages; however, you can expect refreshments, and a full schedule of musical performances. As always, Renfrew Museum will come to life with all natural decorations, hand-made by our local garden clubs, Friends of Renfrew and other community volunteers. You will receive a special invitation to our open house under separate cover, sometime in November.

Also, after a one year absence, we are bringing back our popular Gingerbread House Making Contest and Exhibition. All our encouraged to participate!

GINGERBREAD HOUSE MAKING SEMINAR SET FOR NOV. 8th

Find out how to make your own gingerbread house at Renfrew's pre-contest seminar. On November 8th at 7:00 pm, **Mike Toth** of the Culinary Department of Washington County's Vocational/Technical program, will present an informative overview on how to go about creating your own house. This is the place to get some pointers and find out where you can go for other resources to help you with your project. Renfrew will also distribute its judging guidelines and other information concerning the contest and exhibition. The seminar will be held in the Visitor's Center and there is no charge to attend. Please call the Museum at 762-4723 for additional information. Please use the form below to enter your creation.

In The Spotlight Museum Volunteers

The staff and directors of Renfrew Museum and Park are extremely thankful for the wonderful volunteer support we receive. We rely on many dedicated volunteers for tours, park maintenance, programs and special projects. In each issue of *der Wetterhahn*, we try to focus on some aspect of volunteer services at Renfrew.

This fall we wish to acknowledge the services of **Louise Kyser** and **Nancy Savage**, two of Renfrew's most dedicated Friends. Both women are long-time volunteer interpreters and leaders of our Christmas program. This year, Louise assumed the role of coordinator for the volunteer interpreters. To her credit, Renfrew was fully staffed during every weekend this season. Thank you, Louise, for assuming this duty. Along the same lines, Nancy committed herself to interpretive duty for our Thursday sessions, rounding out our complete coverage. Renfrew's visitors and staff appreciate the time you and all of our other volunteers have given!

Each year, Renfrew's volunteers take part in an appreciation trip to another historical site. In August, our group visited Jefferson's Monticello in Charlottesville, Virginia for a behind the scenes tour of this wonderful house. This trip was open only to Renfrew volunteers & staff.



Renfrew Museum's Annual

GINGERBREAD HOUSE CONTEST & EXHIBITION

As part of its holiday celebration, Renfrew Museum is holding a Gingerbread House Making Contest. Individuals, families and groups are encouraged to participate! Please complete this application and return it to Renfrew Museum at 1010 East Main Street, Waynesboro, PA 17268 by *Friday, November 23rd*. Your house needs to be at Renfrew by *Friday, November 30th*. It will be on display until December 11th and may be picked-up on Wednesday, December 12th or anytime thereafter. Thanks, and good luck baking and decorating!

Prizes will be awarded in all categories, plus Best of Show and Visitor's Choice. Original designs and the use of all natural/edible ingredients is encouraged. Be creative and have fun!

Name: _____ Phone: _____
Individual, family or group/organization

Address: _____

Pick an entry category for judging (please circle)

*Ages 6 to 12

*Ages 12 to 16

*Adult

*Family

*Group or Organization



Fall 2001

**Museum Donations & Corn Maze
New Paintings & Program Review**

We are pleased to report that Renfrew Museum and Park was recently given two oil paintings by Waynesboro artist, Robert Morrow. These outstanding original oil paintings were displayed at Renfrew Museum in 2000 as part of our Twenty-fifth Anniversary celebration.

Thank you, Bob, for thinking of the Museum. We look forward to placing these originals in a location where they will be enjoyed by our many visitors.



"Renfrew Museum" by Robert Morrow. This is one of two original oil paintings recently given to Renfrew Museum by Mr. Morrow.

"Monster Maze" Update

Renfrew Museum and Renfrew Institute are pleased to report that our giant 4-acre "Monster Corn Maze" was an unqualified success. Open Saturdays and Sundays in September, the maze attracted approximately 250 visitors per day. Our thanks go out to Dr. Garrett Blanchet for his vision and untiring efforts in developing and organizing this monumental project. We are also grateful to the various church, scout and community groups that gave their time to staff this event. Many thanks!

**Museum Wishlist
Renfrew's Wish List - Still Here!**

As part of our long range planning, the staff and boards of Renfrew have compiled a master list of repairs that need to be done on the buildings and items we need to better do our jobs. We first ran this list in the Spring issue of *der Wetterhahn*. While we have had some response, there are still many items that we need. So, here we are once again with our revised wish list.

Renfrew's needs come in all shapes and sizes. Some items must be purchased new, while others *need* to be old. We also need manpower! Please review the list below. All contributions to Renfrew are tax-deductible as allowed by law. Thanks for your help!

- *Chain Saw, 18 inch (new or used)
- *Bubble Glass for Museum Window Panes
- *Fiberglass Step Ladder, 4 to 5 feet (new or used)
- *Upright Vacuum Cleaner (new or used)
- *Metal Folding Chairs
- *Matching Antique Style Lights for Museum Porches
- *Wooden Shutters for the Fahnestock House and Museum (sponsorship to have them reproduced)
- *Volunteer Tour Guides
- *PCC Work Crew Leader (paid position - see update on page 6) - please call the Museum at 762-4723 and ask to speak with either Jeff Bliemeister, Curator, or John Frantz, Supervisor of Buildings and Grounds, for additional information on the PCC position listed above.

If you can help us with any of these items, please contact the Museum at your convenience. We will gladly make pick-ups or delivery arrangements when required. Thank you for your support!



Renfrew Museum and Park

1010 East Main Street, Waynesboro PA 17268 (717) 762-4723



FRIENDS OF RENFREW - Application for Annual Membership

Name _____

Address _____

City/Town _____

State and Zip Code _____

Optional Information:

Telephone Number _____

Email Address _____

Membership Categories

- Life \$1,000 _____
- Bell Society \$250* _____
- Curator's Associates \$200* _____
- Sustaining \$125 _____
- Family \$50 _____
- Donor \$25 _____
- Individual \$15 _____
- Student (ages 6-15) \$5 _____

Please send me information on volunteer opportunities at Renfrew:

Endowment Fund: _____

(Endowment Fund Donations help to build Renfrew's future. They are invested for long-term growth, not incorporated into our operating budget). *Bell Society and Curator's Associates are categories with unique benefits and characteristics. Please call for more information.



Fall 2001

- RENFREW TIDBITS -

Pennsylvania Conservation Corps Grant

We are sorry to report that we have no new news on the status of our grant from the Pennsylvania Conservation Corps. The PCC grant provides for a work crew of young adults to spend one full year at Renfrew. Our grant was slated to begin on July 1st of this year. Unfortunately, we still do not have a crew leader.

The PCC office in Harrisburg is actively searching for an individual to fill this position. If you know of anyone with basic construction/restoration skills who enjoys working with young people, please have them get in touch with either John Frantz, Supervisor of Buildings and Grounds or Jeff Bliemeister, Museum Curator, as soon as possible. We are anxious to get going on this project that will further the restoration of the Fahnestock House and bring other much-needed site improvements to Renfrew.

Bell Society Membership Program

In the last issue of *der Wetterhahn*, we unveiled the details of the second offering of the **Bell Society**, our special two year membership program.

Response from our membership has been good and this limited program is beginning to fill up. Currently, Renfrew has not done any outside promotion of this program, limiting membership to existing Friends. This will be your last chance to join this program, before we begin a full scale promotional campaign designed to attract new members.

The Bell Society is a two year membership that includes a limited edition reproduction of a John Bell piece. Potter, Lynnette King, is shown below with the small "Turks Head" cake mold she is currently making for Renfrew. Bell Society membership costs \$250.00 and is limited to only 100 individuals or couples. As this is a two year program, dues may be paid in two annual payments of \$125.00.



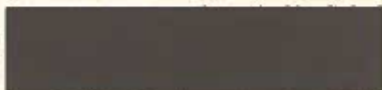
**der
Wetterhahn**

Renfrew Museum and Park
1010 East Main St. Waynesboro, PA 17268
(717) 762-4723 E-mail: renfrew@innernet.net
Web site: www.renfrewmuseum.com

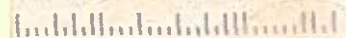
RETURN SERVICE REQUESTED



Printed on Recycled Paper



17268+



The Weathervane