

der

The Weathervane

Wetterhahn



Volume X, Issue II The Newsletter of Renfrew Museum & Park Spring 1999

RENFREW OPENS FOR THE 1999 SEASON -GRAIN CUTTING & THRESHING DAYS: JUNE 24th-JULY 4th-

Renfrew kicked off the 1999 season with Spring Fest weekend, April 24th and 25th. Hundreds of visitors were educated and entertained by demonstrations of crafts and trades of the 19th century. Renfrew Museum was open to the public for complimentary tours, and approximately 175 guests toured the house during the weekend. Many thanks to all who volunteered their time to make this event a success.

IN THIS ISSUE

Calendar of Events/Program Reviews - In our last issue, we announced Renfrew's complete schedule for 1999. In this installment, we present the remainder of the year's programs, along with a review of March's first ever Spring Gardening Symposium.

Feature - Join us at Renfrew this Summer for Grain Cutting & Threshing Days on June 24th-July 4th. See antique equipment in action and on display. The Visitors Center will also host a special exhibition on agricultural and industrial history co-sponsored by **Renfrew Museum** and the **Waynesboro Area Industrial Heritage Trust**. See the feature article for a complete schedule of events.

In The Spotlight - Learn about two more of the wonderful people who contribute to Renfrew.

New Additions to the Collection - An early 19th Century Scherenschnitte (decorative paper cutting), a circa 1775 English import tea set, a German-English Dictionary (circa 1860), a child's highchair (circa 1790) and a set of reproduced period tapestry style bed hangings are added to Renfrew's permanent collection.

Renfrew Tidbits - "Cap-tivating Hats" is the feature exhibition in our changing gallery. An overnight bus trip to Tarrytown, NY is being offered. Volunteer Interpreters needed! Plans for Renfrew's Twenty-fifth Anniversary are in the works. The Museum undergoes some interior improvements. Collections inventory begins. Pavilion rental dates still available.

GRAIN CUTTING & THRESHING AT RENFREW

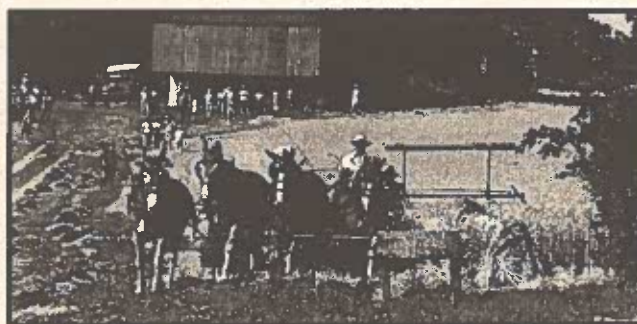
This Summer, Renfrew Museum & Park is pleased to offer special public programs featuring historic demonstrations of grain cutting and threshing. Friends of Renfrew may remember that we featured a similar program two years ago as part of Waynesboro's Bicentennial Celebration.

For 1999 we are proud to offer the following schedule of programs, free of charge and open to all.

June 26th to July 4th - A special exhibition on the progress of grain cutting and local agricultural/industrial history in Renfrew's Visitors Center. This exhibition is sponsored by the Waynesboro Area Industrial Heritage Trust. **There will be a special members only exhibition preview on Thursday, June 24th from 2 pm to 5 pm. RSVP not required.**

June 26th (Saturday) - Join us as we cut eight acres of wheat using a horse-drawn 1934 John Deere Binder. Volunteers are invited to help with the shocking. This activity takes place at the Fahnestock Barn Field.

July 3rd & 4th (Saturday/Sunday) - View antique equipment in operation for the threshing of eight acres of



John Frantz, Renfrew's Supervisor of Buildings & Grounds, drives a team pulling a grain binder. Photograph taken at Renfrew Museum & Park's Community Heritage Agriculture/ Industry Awareness Program in 1997.



Spring 1999

Grain Cutting & Threshing -continued-

wheat in the field behind the Museum. See Frick and Geiser steam engines, threshing machines and a wire tie



baler in operation, along with a display featuring: a 1901 Geiser separator, a modern day self-propelled Gleaner combine and round New Holland Baler.

Emerson-Brantingham steam-engine owned by H. Eugene Lawson of Greencastle. This machine was made by the Geiser Company in 1916. This engine, along with others, may be viewed this summer.

Renfrew will also have the following items on special loan from Maryland collector, **Frank Artz**:

Horse Treadmill, circa 1870. Manufactured by Samson Power and Thresher, East Berkshire, VT. This machine can be powered by one or two horses. It was used to provide power for feed grinders, feed cutters, threshing machines or other machinery requiring belt power. Some models had brakes and could be belted up from either side.

Ground Hog Thresher, Civil War Era. Manufactured by J. I. Brown Manufacturing, Roaring Springs, PA. This is an early example of a threshing machine used to separate the grain from the straw during the harvest of small grains such as wheat, oats, barley and rye. It is equipped with a vibrator and a separator. These machines were staked to the ground rather than being mounted on wheels and as a result became known as "ground hogs."

McCormick Reaper, 1931 reproduction of McCormick's first 1831 reaper. This reproduction was made especially for the centennial anniversary of the McCormick reaper. McCormick continued to manufacture reapers until 1935.

Many thanks to Mr. Artz for generously loaning these items to Renfrew for this special program.

Reapers: an historical overview

By the end of the eighteenth century, innovators were proposing the need for a machine for reaping grain. Men of both science and agriculture recognized that the development of such a machine would be a large improvement over the hand held grain cradle.

The first practical reaper was completed between May and July of 1831. Virginia, the cradle of American agriculture and the home of presidents, was the place and Cyrus Hall McCormick was the man who took the concept of a reaper and built a business foundation. A whole new American enterprise, the farm equipment industry, grew from the beginnings of McCormick's first reaper.

McCormick's 1831 reaper first had a straight one inch-wide flat blade but it was modified later that year with teeth or serrations, all running in the same direction to improve the cutting action. The blade vibrated in a slot through recurved steel fingerguards. The guards were pinned to wooden pegs. This reaper cut a four foot swath.

In 1831 McCormick cut a patch of wheat on his father's farm and six acres of oats in a nearby field. In 1832 fifty acres of wheat was harvested successfully on the home farm and two public demonstrations were held. In 1833, McCormick again modified his reaper and equipped it with a 4 1/2 foot serrated sickle.

He secured the patent for his reaper on June 21, 1834.

PROGRAM COMMITTEE

This agricultural/industrial program at Renfrew is possible because of the hard work of the following individuals;

George Buckey, John Frantz, Bill Helfrick, Mike Rohrer and Bill Shank.

Frick Threshing machines at work

Photo taken during Renfrew's 1997 Community Heritage Agricultural/Industry Awareness Program.





Spring 1999

Calendar of Events -June to December, 1999-

Bell Society Presentation and Dinner

Saturday, June 5th: Member's Dinner at the Waynesboro Best Western, 5:00 pm; public presentation featuring Lester Breininger at the Renfrew Visitors Center, 7:00 pm.

The members of Renfrew Museum's BELL SOCIETY will receive their limited edition reproduced John Bell vase at a program scheduled for Saturday, June 5th, 1999.

The Bell Society was introduced to the public in last fall's edition of *der Wetterhahn*. This membership level is two years in length and is limited to a total of 100 individuals or couples. For a contribution of \$350.00 members receive all regular Renfrew benefits, plus a limited edition reproduction John Bell pottery piece. For our inaugural edition, Renfrew commissioned renowned master potter, Lester Breininger of Robesonia to reproduce a rarely seen Bell vase from the mid-19th century. Mr. Breininger's prototype reproduction is available for viewing at Renfrew.

Bell Society members are invited to attend a one-time only specially-catered dinner at Waynesboro's Best Western Inn on Saturday, June 5th. Lester Breininger will be the guest of honor. Following the Bell Society dinner, members will move to Renfrew's Visitors Center for a public program. Beginning at 7:00 pm, Mr. Breininger will share his thoughts on John Bell and Bell family pottery, and his individual experiences related to the reproduction of Renfrew's limited-edition piece. Following his talk, Mr. Breininger will make the presentations to the Bell Society members.

All are welcome to attend Mr. Breininger's program at 7:00 pm. Please RSVP to Renfrew Museum at 717-762-4723 by Wednesday June 2nd.

AT THIS TIME, A VERY LIMITED NUMBER OF BELL SOCIETY MEMBERSHIPS ARE STILL AVAILABLE. If you are interested in becoming a Bell Society member and attending the June 5th dinner, please contact the Museum by Friday, May 28th. After this date, Bell Society membership is closed and will remain so until the next reproduction piece is commissioned in the fall of 2000. All Renfrew memberships are tax-deductible as allowed by law. Many thanks to all our new Bell Society Members. Your support of Renfrew is appreciated.

Calendar of Events -continued-

Binding Day at Renfrew

Saturday, June 26th - 9:00 am

Industrial Exhibit Opens in the Visitors Ctr.

Saturday, June 26th (runs for two weeks)
Sponsored by the Waynesboro Soc. for Ind. History

Threshing Demonstration at Renfrew

Weekend of July 3rd/4th - 9:00 am

Annual Civil War Encampment

Weekend of August 13th-15th

Cumberland Valley Guild of Craftsmen Show

Saturday, September 4th, Time to be announced

Lecture Program - The PA German Garden

Tuesday, September 14th - 7:00 pm. Speaker: Dr. Irvan Richman: sponsored by the Pennsylvania Humanities Council

Sixth annual Renfrew Pumpkin Festival

Saturday, October 9th - 11 am to 4 pm

Scarecrow Making Contest

Saturday, October 23rd, Time to be announced

Second Antique Appraisal Day

Saturday, November 6th, Time to be announced

Gingerbread House Making Seminar

Tuesday, November 16th, Time to be announced

Annual Open Hearth Thanksgiving Program

Saturday, November 20th, Time to be announced

Annual Yuletide Christmas Celebration

Weekend of December 4th-5th, Program and times to be announced

Renfrew 1999 Exhibition Schedule

Cap-tivating Hats - (April to June)

Make Dos - Antique Objects that have been modified for continued use (June to August)

A Century of Lighting (September to October)

Reproduced John Bell vase created by Lester Breininger of Robesonia, PA. This is the first prototype to come from his pottery in November, 1998. The original is from the mid-1800s and signed: "John Bell."





Spring 1999

Spring Gardening Symposium -Reviewed-

Renfrew held its first ever Spring Gardening Symposium on March 27th. The event was a resounding success and enjoyed by all who attended.

Over the course of the day, several hundred visitors dropped in to participate in one of the seminars or browse through our outdoor demonstration and vending area. Renfrew would like to publicly acknowledge the following individuals and businesses who contributed to this program. We appreciate your time and financial support.

Program Presenters

Maggie Stemann Thompson, Head Vegetable Gardener, Historic Monticello.

Koi Unlimited - Frederick, Maryland (Water Gardens).

Sylvia Braderman - Camp Hill, PA (Herbal Bonsai).

Alloway Gardens - Littlestown, PA (slide presentation on Lavender, The Herb of the Year).

Pat McCann - Harrisburg, PA (slide presentation on Roses and their Care).

Demonstrators & Vendors

Alloway Gardens: Littlestown, PA

Antietam Gardens: Waynesboro, PA

Appalachian Nurseries: Waynesboro, PA

Sylvia Braderman: Camp Hill, PA

Ruth & Stanley Davis: Waynesboro, PA

Gettysburg Gardens: Gettysburg, PA

Fred & Phoebe Hauber: Waynesboro, PA

The Master Gardeners, Penn State Cooperative Extension

The Plantation on Polidor Road: Waynesboro, PA

Rooster Vane Gardens: Funkstown, MD

Shaffer Sales & Service: Waynesboro, PA

Tuscarora Daffodil Group: PA, WV, MD Membership

Willow Pond: Fairfield, PA

Program Sponsors

Ace Hardware: *Waynesboro* (door prize)

Alloway Gardens (program sponsorship)

Antietam Gardens (door prize)

Appalachian Nurseries (program sponsorship & door prize)

Ruth & Stanley Davis (program sponsorship)

Gettysburg Gardens (door prize)

Green Arbor Nurseries: *Waynesboro* (sponsorship & door prize)

Plasterer's Flowers: *Chambersburg* (door prize)

Rooster Vane Gardens (program sponsorship)

Shaffer Sales & Service (door prize)

The Plantation on Polidor Road (program sponsorship)

Willow Pond (program sponsorship)

Program Committee

Thanks to the following individuals for their assistance in organizing this event:

Maggie Cisar, Judy Bricker, Shirley Baker and Jeffrey Bliemeister

We hope to see you at next year's Gardening Symposium!

In the Spotlight Renfrew's Volunteers

In this issue of der Wetterhahn, we are delighted to introduce two more of Renfrew's dedicated volunteers - interpretive guides, Carolyn Krouse and Polly Moyer.

Carolyn Krouse has been with Renfrew Museum for the last 8 years. She became interested in Renfrew about 16 years ago when she and her family had just moved to Waynesboro, and the site was pointed out to her by friends.



Carolyn became a volunteer interpreter after reading an advertisement in the local newspaper. She sees Renfrew as, "a great gift to the community," and enjoys having the opportunity to meet and visit with the many different people who pay a visit to the site.

When she's not at Renfrew, Carolyn likes spending time with her family and volunteering for other community organizations. She is also an enthusiastic antique collector who has shared items from her collection for some of Renfrew's temporary gallery displays.

We are grateful for her dedication to the Museum, and happy to have her as part of our team!

Polly Moyer has been a Renfrew interpreter for about the last 10 years. She and her husband, Clayton (also a volunteer Renfrew Interpreter), have lived in Waynesboro for more than 40 years. They have 3 children and 5 grandchildren.

Polly has a Bachelors Degree from Hood College and a Masters from Columbia University. She formerly taught Home Economics at East Junior High School. She keeps coming back to Renfrew every year because, "the Museum and Park need community involvement." When she's not helping us, Polly also volunteers at the Waynesboro Day Care Center (an organization she helped create) and the Hospital where she serves at the main information desk.



As an interpreter, Polly enjoys being able to help bring the history of Waynesboro alive for our visitors. We are happy to have her services.



New Accessions

Renfrew is pleased to announce the addition of the following items to its permanent collections. We also wish to acknowledge the contributors for their generosity toward Renfrew Museum and Park. These artifacts are all outstanding pieces that will help us do a better job of interpreting the site.

- *Scherenschnitte "Desdamaona & Othello"* (decorative paper cutting) from the early 19th century, courtesy of Rebecca Dietrich.
- Circa 1775 soft paste English import *Tea Set*, purchased with funds from the Margaret Keller Memorial Fund.
- *English-German Dictionary*, donated by Ruth Gembe.
- *Childs High Chair* from the late 18th century, contributed by Cathy Kaminsky.
- Reproduced early 19th century tapestry style *Bed Hangings* for use in the Urban Bedroom, donated by David Thomas.



Renfrew's English Import Tea Set, on display in the Dining Room. Purchased through the Margaret Keller Memorial Fund

RENFREW IMPROVEMENTS

We are pleased to announce that the following improvements have been made at Renfrew over the last several months. We are grateful for the time and talent that went into these projects.

Renfrew Museum's **Changing Gallery** was renovated with many new improvements. **David Hykes**, Renfrew Executive Committee member, and members of the staff, installed sliding glass doors and new shelves in the room's closet area. A wooden molding strip was installed for hanging pictures, and the entire room received a new coat of paint. Thank you, David, for your volunteer efforts in improving this display area; the results are very impressive!

The **Snow Hill Room** (second floor of Museum) had some paint and plaster cracks repaired just in time for our April opening. This work was done by **Bill Kohler** at no charge to the Museum. Mr. Kohler's dedication to Renfrew is certainly appreciated.

Renfrew Tidbits

BUS TRIP TO TARRYTOWN, NY September 26th & 27th (overnight) *Make your reservations now!*

Renfrew is pleased to announce plans for an overnight bus trip to Tarrytown, New York on September 26th and 27th. This trip includes visits to many exciting and well-known historic sites as well as a few hidden treasures discovered by the Renfrew staff. All in all, it promises to be a fun-filled two day adventure. This trip is open to all. Reservations may be made by calling the Museum at 762-4723.



Here is our Itinerary:

Sunday, September 26th - leave the Renfrew parking lot at 6:30 am (travelling by Atlantic Coast Charter Bus).

-Arrive at Philipsburg Manor, Tarrytown, NY for a 1:00 pm tour. We will be visiting on the date of their Apple Harvest Festival so there will be all kinds of special activities taking place. We will tour the site until 3:30 pm, and then have a box lunch in their Greenhouse Cafe.

-Drive by visit of the Old Dutch Church of Sleepy Hollow (no organized tour - we will stop on our own if conditions allow).

Monday, September 27th - Breakfast then off to Lyndhurst for a 10:00 am tour, followed by another boxed luncheon. Our next visit is to Sunnyside (roughly 12:30 - 2:00 pm) followed by our final



Philipsburg Manor, Tarrytown, NY

tour of the day at Boscobel Restoration (2:30 pm). Boscobel is possibly the least well known of the house museums we will tour. It is an elegant, restored early 19th century estate with period landscaping and outstanding ambience.

-For our last stop in New York, we will return to Tarrytown for dinner at "Horsefeathers." This restaurant is styled after an English pub, offering home cooked food in a "Sleepy Hollow Mood."

-After dinner, we will return to Renfrew. Our anticipated time of arrival is approximately midnight.

The fee for individual participation is \$185.00. This includes the bus trip, room, two box lunches, four museum admissions and the Monday dinner. The price for a couple is \$295.00.

We hope you will join us for what promises to be a wonderful travel experience. To make reservations or obtain more information, please call Renfrew Museum at 762-4723.



Spring 1999

More Renfrew Tidbits:

Renfrew celebrates its **25th anniversary** of being open to the public as a Museum and Park next year. We are looking for community minded individuals to help us organize a special series of programs to take place over the course of the year. If you are interested in helping organize this fun celebration, please give us a call!

Renfrew's Pavilion is available for rent by families, businesses and community groups. Some weekend dates are still available. Please call the museum for reservation information.

Now that we are open for the season, Renfrew has the need for additional **Volunteer Interpretive Guides**. If you are enthusiastic about history, like to meet people from all over the world, and have a few hour to offer each month, we have the perfect job for you! Contact Renfrew for more information on this rewarding opportunity.

Cap-tivating Hats is the featured exhibition in the Museum's newly-remodeled changing gallery.

Focusing on hats from the late 18th century to approximately 1920, the exhibition offers a fascinating and attractive view of headwear and its related accessories.

This exhibition was created by Shirley Baker and Associate Guest Curator, Rebecca Manifold. It features items from Renfrew Museum's collection, supplemented by temporary loans from Rebecca Manifold, David Thomas, Shirley Baker, Bob & Sylvia Engle and the Yingling Collection.

Many thanks to everyone who helped make this exhibition possible. The display runs through Sunday, June 13th. Please stop in and have a look!



der Wetterhahn

Renfrew Museum and Park
1010 East Main St. Waynesboro, PA 17268
(717) 762-4723 E-mail: renfrew@innernet.net
Website: www.innernet.net/renfrew/



Printed on Recycled Paper