

The Rooster Herald

All the news that's fit to crow about!



Renfrew Museum and Park

Volume 1, Issue 1

August 2015

Renfrew's Summer Kitchen



A side view of the Summer Kitchen

Almost two years after the idea of a Summer Kitchen was first presented to Renfrew, the building is now finished and almost ready for use.

The building originally stood behind the Alexander Hamilton Library in downtown Waynesboro. When plans were made to expand the library, one of their board members, Marie Lancer-Beck, contacted Renfrew to ask if we would be interested in a Summer Kitchen. Since the Royer family would have had a similar building by their home, our board decided to accept the building. This was around the same time another offer was made to Renfrew in the form of a bake oven. Aldus Petre, who owns a farm on Bear Road had a 200 year old bake

oven that was going to be torn down, so he reached out to the museum and asked if we would be interested in acquiring it. Since the board had already decided to interpret and use the Summer Kitchen, the addition of a bake oven was a special bonus, and its timeframe fit with the Royer family as well.

Beginning in 2014, the Summer Kitchen's cornerstones were marked, and the building was torn down and transferred to Renfrew's property. In the spring, the bake oven followed. With the Franklin County Tourism and Quality of Life grant, the Renfrew Historic Summer Kitchen Project officially began.

The plans for the building were drawn and donated by Rex Benchoff of Benchoff & Associates Engineering and mason Dick Ressler started work in the summer. By winter, the building was 50% complete and work resumed in the spring.

Ressler unfortunately fell ill in the spring, so Doug Royer and Dave Burkett were hired to continue the masonry. Brad

Royer was in charge of the carpentry and the roof. By the beginning of August, work on the building was complete.

We will be teaching volunteers who are interested in learning how to cook in the hearth and how to use the bake oven.

The Summer Kitchen will also be used for a childhood nutrition program underwritten by Summit Endowment, called Eating With Your Ancestors. Families will be able to learn sustainable gardening, traditional hearth cooking, and nutrition.

If you are interested in helping with the program or learning how to use the bake oven, please contact Cindy Fink or Lindsay Dukes at the office.

The Summer Kitchen dedication ceremony will be at the next Farmstead Tour on September 19th.

Renfrew Museum and Park
1010 E. Main Street
Waynesboro, PA 17268

Phone: 717-762-4723

www.renfrewmuseum.org

Fun Fact of the Month:

- DER GICKERIGI IS PENNSYLVANIA GERMAN FOR ROOSTER.

Inside This Issue:

ACCESSIONS COMMITTEE UPDATE	2
WE'RE BACK IN PRINT!	2
HOOKEK RUGS DISPLAY	3
ED'S CORNER	3
WELCOME NEW MEMBERS	4
JACK MIDDOUR POTTERY	4
CALL TO ACTION	5
NEEDS OF THE MUSEUM	5
NEW CABINETS	5

Accessions Committee Update

The Accessions Committee accepts and accessioned items purchased, gifted or donated to Renfrew that enhance the Nicodemus collection and fit within the pre-1870 domestic setting; or are additions/replacements to the John Bell and Bell family pottery. This maintains the integrity of Renfrew Museum's collections and archives. All items are properly cataloged, imaged and physically numbered by the committee, and records are safely stored by Renfrew staff.

The most significant accession within the last year was the 10-piece Bell pottery donation by Kenton H. Broyles in his name and his late wife, Audrey D. Broyles. The gift included a horse figure, two multicolor vases, soap dish, small dog figure, butter tub, spaniel figure, compote, round frame and jug.

In 2014 the committee accessioned 74 items and so far this year 47 items have been accessioned.

In January the committee cleaned and rearranged the Bell Pottery Exhibit to accommodate the Broyles' donations and several other worthy pieces.

We're Back in Print!

We decided it was high time to get a newsletter back in circulation for the museum and park as we continue to grow and move forward.

The newsletter will be quarterly; August, November, February and May will be the months for the newsletters. All of them will be available digitally every quarter, with the addition of the August and February copies being sent out in print.

Since it is more cost effective to send them out via email, we highly encourage all of our members

Through midwinter and spring, an inventory with verification of accessions' numbers for the furnishings in the museum house was conducted. The project concluded this summer with the accessioning of unmarked items.

Another project was to prepare the hooked rug display in the wagon shed before and after the farm art exhibit.

Accepting their responsibilities with great enthusiasm, our ever vigilant committee members keep their eyes peeled and ears attentive for additions and replacements. They love to scout auctions and antique markets regularly to enhance Renfrew's collections. Members are known to "drop everything" to stop by the Visitors Center to see an item a visitor brings in "on the minute" or make an impromptu home visit to look at a possible purchase or donation! Members provide pick-up when required, proper cleaning and in some cases even repairs of items received.

In June, some members took a local

to have an email account. We just want to make sure everyone is able to receive our newsletter!

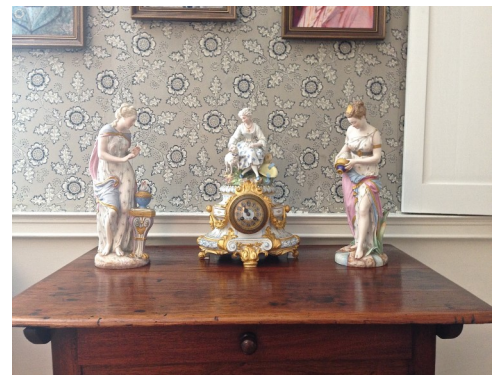
To sign up for the email newsletter, please send Lindsay Dukes or Judy Elden an email with the header Email Newsletter, and we will add you to the list of recipients. You will receive every newsletter via email, as well as the printed versions in February and August.

If you do not have an email, all of the newsletters will be available on our website under the Newsletter tab.

field trip to consider accepting the gift of an original 2-story log home, similar to the first Daniel Royer family home on what is now Renfrew.

If this committee sounds like a good fit for you, please contact Renfrew and let us know. We're always interested in new members!

Current Accessions Committee Members are Terry Barkdoll, Bob Benchoff, Bill Conrad, David Hykes, Allie Kohler, Gene Martin, Alice McCleaf, Red Mohn, and Rick Shindle.



Pictured are two 19th century French porcelain statues and one mantel clock given to the museum by Ed Miller, who originally received them as a gift from Emma. They are now on display in the Nicodemus Parlor.

Hooked Rugs Display

Once again, visitors and members will be able to enjoy beautiful hooked rugs in the Wagon Shed Room.

The collection of rugs from Emma Nicodemus will be on display until the end of October.

The time period for the rugs ranges from 1850-1925, and was a popular form of art for women. Unfortunately, we are unable to attribute the rugs to any specific artist or year, as they were done privately in homes.

Ed's Corner

All stories are told by Ed Miller from his perspective to Lindsay Dukes.

Some might think the idea of falling in love at first sight is reserved for star crossed lovers in stories, but for Emma Geiser, seeing Renfrew and the Royer House for the first time was certainly love at first sight.

Emma was ten years old and came down to the creek with her father to do some fishing, as he did every day. Riding his old bicycle (which the museum owns), they traveled down E. Main Street and came upon the creek, and what we know as Renfrew. She took one look at that beautiful stone house and decided one day she was going to live there.

She may have been considered an eccentric by some, but Emma was truly a visionary. Her interest in living in the Royer house spurred her antique collecting. It all started the same year she saw the house for the first time. Her first antique, given to her by her grandmother, is the green rocking chair on display in the Nicodemus parlor in the house. From that first antique, her

Many colorful patterns and designs were used on burlap backing. This was the least expensive material of the time period and also easy to work with.

Everyone is welcome to stop by the Visitor's Center to see this wonderful display during our open hours during the week or on the weekends.

collection grew and grew over the years.

When Emma and Edgar got married after many years of courting, the couple looked at two different properties. They ultimately decided Renfrew was the best choice, and the dream of a young girl from years ago finally came true. The Nicodemuses bought the property in 1942 and remodeled for over a year before finally moving in August of 1944.

While the remodeling was happening, Emma was vocal in how she envisioned the house. It was a challenge, but almost all of the wood and stone from the original house was saved and used in the restoration. She compromised when the pointing for the stones and mortar on the house was not technically historically correct, but otherwise her visions for the house became reality. She made sure every fireplace in the house was operational, and even added an extra one in what was her dressing room on the second floor of the house.

By the time they were able to move in, Emma and Edgar had a large enough an-



Emma's collection of rugs is back on display in the Wagon Shed Room.

Ed Miller will be sharing stories of his experiences with the Nicodemus family for Ed's Corner.



tique collection to fur-

nish most of the house. Much of what you see today in the museum house is from their collections.

After many years of living together happily, Edgar passed away in 1965. Emma continued to live in the house until she passed in 1973. During those years between Edgar's passing and hers, her visionary ideas for this property never stopped. Every single day from 1969 until her death, Emma would have me come over to the house and talk about her future plans for this house and everything that came with it. She made me promise to keep it a secret at the time, but it was with these conversations a plan was set in motion and through her will, her dreams of a museum and park came true.

Emma was very unique; she knew what she wanted, and knew how it could be done. With her forward thinking, this house and the other buildings were preserved, and can now be enjoyed by everyone. From her first dream of living in that beautiful old house to her final dream of turning the property into a museum and park, Emma's drive and 'eccentric' thought process made those dreams come true.

"The dream of a young girl from years ago came true."

The Rooster Herald

All the news that's fit to crow about!

Welcome New Members!

We want to extend a welcome to all of our new members this season. With the support of all of our members we are able to run many great programs, keep the park beautiful, and continue to be a special place in Waynesboro!

We welcome the following individuals and businesses joining our Renfrew family:

Melinda Anglin
Susan Baker
Yvonne Baker
John & Debbie Beck
Liane & Joe Benchoff
Kate & Don Biesecker
Gordon & Karen Brechbiel
Vince Cahill & Claire Hunter
Robert & Polly Cave
Phyllis Alta Dick
Wayne Driscoll
John & June Ecker
Terry Eigenbrode
Elizabeth S. Emery
Cindy Fink
Don & Mary Heefner
Shelly Kampe

Rober Kimple, Sr. &
Sandra Spence
Madison Kirkpatrick &
Dean Miller
Constance Martin
Rhonda McFarland &
Lowell Ezersky
Tom & Susie Murphy
Jeff & Kelsey Rock
Marilyn Ross
Pamela Rowland
William & Ruth Royer
Tom & Peggy Sherald
Ward & Carol Simmons
Cheryl Piper-Snyder
Sandra Spence
Carroll & Louana Sturm
Don & Jacque Truett
Athena Varounis
Stan & Joyce Wade
Edna Royer Wentworth
Michael Wilhide
Eagles Club, Inc.
Jeff Rock Consulting
Hypnotic Imagery, LLC
Lucinda Potter CPA



Pictured above is the work of Jack Middour, now on display in the Visitor's Center.



Pictured above is one of Middour's pieces made for his grandson.

Jack Middour Pottery

Renfrew has a special display of pottery by Jack Middour on display now through October.

Jack's work has recently gained popularity in the collecting world. We are very lucky to have such unique pieces in the Visitor's Center on loan from his family.

Calendar of Events



Pumpkin Fest 2014



Christmas on the Farm 2014

August 20th-On Tap Concert; Classic Rock and Roll. Free Admission 7pm behind the Museum House

September 6th-Bluegrass Festival; A part of WaynesboroFest. Free Admission 2pm-5pm

September 12th-U.S. Navy Band Commodores; Jazz Ensemble. Free Admission 6pm behind the Museum House. Free ice cream from Antietam Dairy sponsored by Franklin County Visitors Bureau.

September 19th-Royer Farmstead Tour; Summer Kitchen Dedication. Admission Fee, Free to Members. 11am-4pm

October 10th-Royer Farmstead Tour; Wagon Rides. Admission Fee, Free to Members. 11am-4pm

October 17th-Pumpkin Fest; Community and Family event for over 20 years running! Admission Fee, 11am-4pm.

December 4th-Christmas on the Farm; Tour the Museum House fully decorated for a traditional 1800s Christmas. Admission Fee, 5:30pm-8:30pm.

December 5th-Christmas on the Farm; Tour the Museum House fully decorated for a traditional 1800s Christmas. Admission Fee, 2pm-8pm.

Call To Action for Volunteers

One of the best things about Renfrew is how we operate, which is primarily through our volunteers.

With more additions to our events calendar every year and increased exposure around the region, more people are coming to Renfrew. We couldn't be happier.

However, there is always a need for additional volunteers as we continue to

grow and expand as a museum and park. We ask you to consider donating a bit of your time to a place you enjoy!

There are many opportunities for volunteering; giving house tours, gardening, going through archival data and artifacts, or helping out at our larger events. There is a place for everyone!

If you are interested in vol-

unteering, please contact our Volunteer Coordinator Lindsay Dukes at the office or by email.



Volunteers can learn how to give tours of the beautiful Royer House, and much more!

Needs of the Museum and Park

With the completion of the Summer Kitchen, the next step is to furnish it.

We are currently in search of a traditional, small farm table that comes with a bench for seating, and one sturdy wooden chair with no arms to go inside of the kitchen. If you would like to donate these items, or know where to find these items, please contact Cindy

Fink at the office or by email.

We are also looking to purchase historically correct pieces of ironware for cooking in the Summer Kitchen and in the Fahnestock Kitchen. However, as they are not a part of our budget for the grant we received, we are asking for sponsors to be able to buy them.

The pieces are currently priced as the following:

Andirons with Spit Hooks-\$450
Four Deep Dutch Ovens-\$85 each
Kick Toaster-\$250
Broiler-\$250

If you would like to be a sponsor, or contribute any amount, please contact Cindy Fink at the office or by email.



A look inside of the Summer Kitchen, which will soon be in use for baking!

Changing Gallery: New Cabinets

If you have recently been through the museum house, you may have noticed something a little different.

The changing gallery recently acquired new display cabinets and installed them over the summer to replace

the older, bulkier cabinets.

These new cabinets open up the room, blend nicely with the rest of the house, and are adjustable to fit different sizes and types of displays. We look forward to displaying new exhibits for Christmas on the Farm,

and for next season!

The old display cabinets were donated to David George for his local museum at D.L. George and Sons in Waynesboro.



Two of the four new cabinets for the changing gallery.

LIST OF STAFF:

Dade Royer-Executive Director
droyer@renfrewmuseum.org

Judy Elden-Visitor Services
judy@renfrewmuseum.org

Lindsay Dukes-Volunteer Co-ordinator
ldukes@renfrewmuseum.org

Cynthia Lawrence-Fink-Grants Administrator
cfink@renfrewmuseum.org

John Frantz-Supervisor of Buildings and Grounds

Leslie Burkholder-Maintenance

John Curfman-Maintenance

Gene Kelly-Maintenance

We have recently updated our mission statement as a museum and park and would like to share it with all of our members as well as our visitors.

NEW MISSION STATEMENT:

Our Mission– Our mission is to preserve, enhance, promote, and interpret the Royer family Pennsylvania German farmstead, the Nicodemus and Bell collections, and the surrounding Park.

Our Vision– Our vision is to be a welcoming and memorable destination where everyone can walk back in time.

Our Values-

Integrity-With honesty and truth, we will adhere to the highest moral and ethical standards in all our endeavors.

Authenticity-We will interpret with historical accuracy all of our exhibits, collections, programs, and events.

Excellence-We will be exceptional in everything we do.

Follow Us on Facebook, Twitter, and Instagram!



@Renfrewmupark



Renfrew Museum and Park



@Renfrewmuseumpark

Renfrew Museum and Park
1010 East Main Street
Waynesboro, PA 17268

Return Service Requested

Non-Profit Org. U.S. Postage PAID Waynesboro, PA 17268 Permit No. 405
